



# Introduction

Part 1

This Relocation Report is designed to provide information about the economic and social structures of the selected communities. This report will compare the social and economic conditions of two communities, each containing 1 or more zip codes. Information used in this report has been broken down to the zip code level. If more than one zip code has been selected for a community, the information displayed will be an average of all the information from the zip codes that make up that "community."

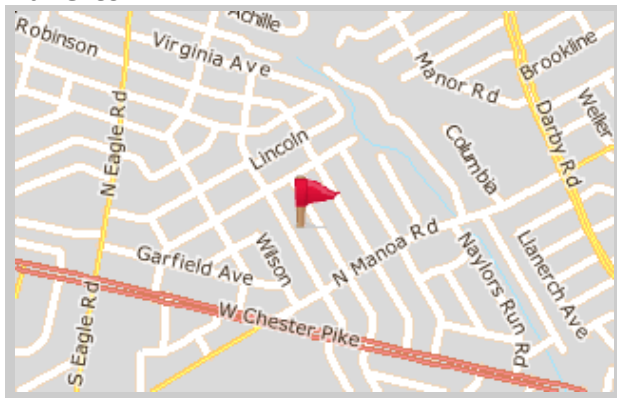
The information found in this report has been compiled and collected from the US Census and other data collection agencies.

The maps below show the center of the communities that are represented in this report.

<b>Havertown</b>
19083 - Pennsylvania

<b>National Average</b>
USA

## Havertown





# Population and Housing

Part 2

This report shows information collected from US Census data and other data collection agencies and is broken down into five general categories: Population, Community Summary, Housing, Housing Stability and the Population Age Demographics Chart.

The Population Age Demographics chart is broken down by community and age group with each bar on the bar graph denoting an age group and the information on top of the bar indicating the number of people in that community for each age group.

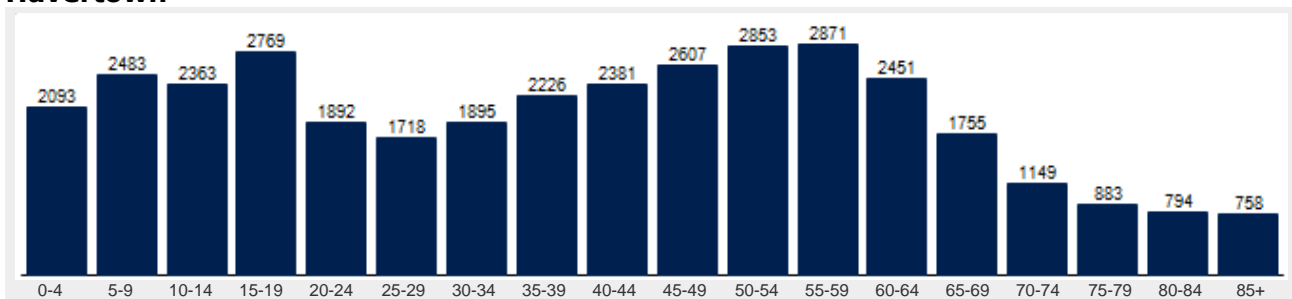
Population	Havertown	National
Male	48.2 %	49.2 %
Female	51.8 %	50.8 %
Total Population	35,939	317,504,602
Median Age	41	38

Housing	Havertown	National
Vacant Dwellings	327	13,735,766
Owner Occupied	11,443	78,220,269
Renter Occupied	1,781	41,845,751

Community Summary	Havertown	National
Population Growth (since 2000)	-1.4 %	12.8 %
Population Density (ppl / mile)	6,468	90
Household Size (ppl)	2.70	2.58
Households w/ Children	34 %	30 %
Annual Residential Turnover	5 %	15 %

Fair Market Rents	Havertown	Delaware County
Studio	\$1,579	\$814
One Bedroom	\$1,860	\$959
Two Bedroom	\$2,243	\$1,156
Three Bedroom	\$2,794	\$1,440
Four Bedroom	\$2,999	\$1,546

## Havertown





# Community Overview

Part 3

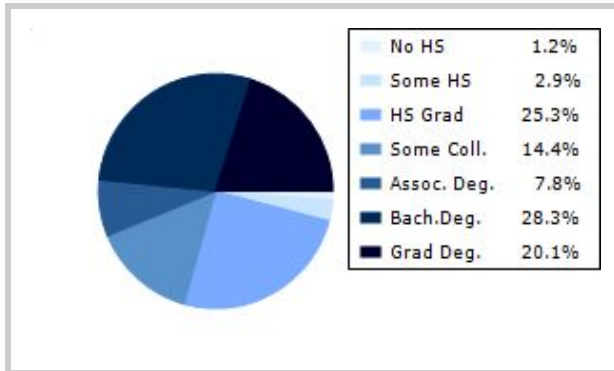
This report shows information collected from US Census and other data collection agencies and is broken down into three general categories: Racial Profile, Marital Status and Education. Each of these categories has been broken down into subcategories making it easy to do a side by side comparison of the two communities.

Education information for both communities has been broken out into two bar graphs. The information at the base of each bar on the bar graph denotes the level of education that colored bar represents. The information to the left of the community bar graph indicates the number of people in that community that have achieved that level of education.

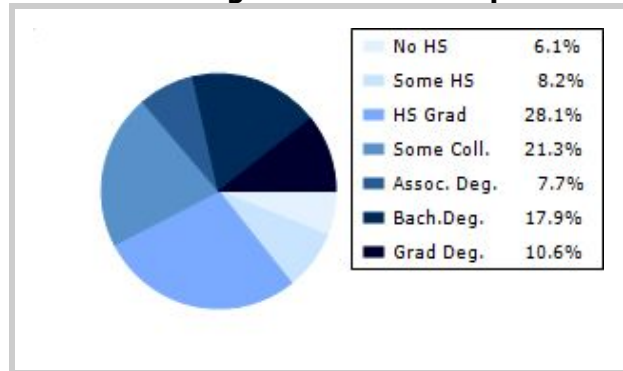
Racial Profile	Havertown	National
White	33,072	229,894,228
African American	736	39,728,359
American Indian, Eskimo, Aleut	22	3,151,782
Asian or Pacific Islander	1,584	15,288,513
Hawaiian	29	641,051
Other	30	18,461,772

Marital Status	Havertown	National
Never Married	28.5 %	31.8 %
Now Married	56.9 %	49.2 %
Separated	1.4 %	2.2 %
Widowed	6.5 %	6.0 %
Divorced	6.7 %	10.7 %
No Family	2.6 %	4.9 %
With Family	48.7 %	47.5 %
With Children	22.5 %	21.4 %
No Children	26.2 %	26.2 %

## Havertown



## National Average Educational Report





# Financial Report

Part 4

This report shows information collected from US Census and other data collection agencies and is broken down into six general categories; Median Income, Income, Household Expenses and Median Asset Values. Each of these categories has been broken down into subcategories making it easy to do a side by side comparison of the two communities.

Median Household Income*	Havertown	National
Age < 25	\$44,465	\$27,240
Age 25 - 44	\$97,980	\$59,626
Age 45 - 64	\$103,244	\$65,864
Age 65+	\$46,846	\$37,196

\* by primary householder age.

Income	Havertown	National (in MM)
< 10K	317	8
10K-15K	261	6
15K-20K	345	6
20K-25K	293	6
25K-30K	451	6
30K-35K	334	6
35K-40K	514	6
40K-45K	596	6
45K-50K	501	5
50K-60K	978	10
60K-75K	1225	12
75K-100K	1891	15
100K-125K	1618	10
125K-150K	1449	6
> 150K	2448	12

Relative Cost Index	Havertown	National
Contributions	126	100
Personal Insurance	133	100
Apparel	120	100
Education	127	100
Entertainment	127	100
Food And Beverages	117	100
Health Care	113	100
Furnishings	125	100
Shelter	124	100
Household Operations	127	100
Misc Expenses	124	100
Personal Care	122	100
Reading	124	100
Tobacco	103	100
Transportation	121	100
Utilities	124	100
Gifts	126	100
<b>Total Expenses</b>	121	100



# Employment Information

This report provides a side by side comparison of the Industries, Occupations and Work Force types for the selected communities. Each of these categories has been broken down into subcategories making it easy to do a side by side comparison of the two communities.

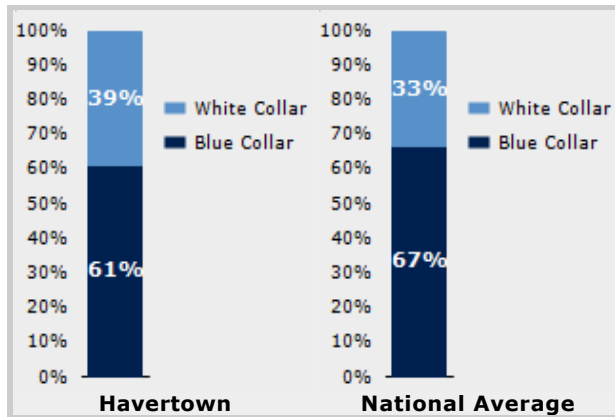
The Industry table to the left shows a breakdown of sixteen different industries and the number of people in each community that are involved in that industry.

The Work Force bar graph below shows the Blue Collar and White Collar percentages for each community, as well as the National Average.

The Occupation table below shows a breakdown of fourteen different occupation classifications and the number of people in each community whose occupation fits that classification.

Industry	Havertown	National
Agriculture	28	699,703
Mining	33	347,874
Construction	578	6,828,820
Manufacturing	388	11,664,002
Transportation and Communications	38	3,718,051
Wholesale Trade	117	1,817,818
Retail Trade	596	21,647,477
Finance, Insurance & Real Estate	237	5,785,438
Services	812	8,831,807
Food Services	509	10,239,067
Public Administration	420	8,640,483

Occupation	Havertown	National
Executive	418	7,810,420
Sales	603	17,227,913
Clerical	1,361	25,919,219
Protective Service	60	2,041,240
Arts	93	2,454,555
Social Services	355	4,338,751
Education	336	4,915,376
Health Care	342	4,273,471
Legal	56	1,738,122
Government	0	1,522,109
Computer Science	113	2,290,801
Finance	237	4,944,436



Transportation to Work	Havertown	National
Public	969	6,079,053
Drive	14,873	97,304,402
Carpool	1,448	15,662,618
Walk	404	3,769,819
Bike	21	489,598
Work at Home	510	3,927,567
Average Time to Work	26.0	25.0



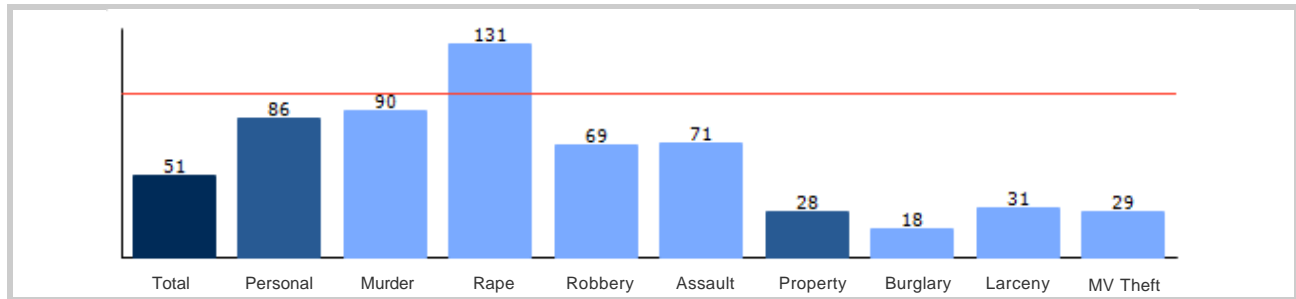
# Community Crime Information

Part 6

This report shows information collected from US Census data and other data collection agencies and is broken down by community and by type of crime, and includes a Total Crime total as well. The information at the base of each bar on the bar graph denotes the type of crime that colored bar represents. The information at the top of the community bar graph indicates how that total compares to the national average for that type of offense.

The national average is represented as "100" and is indicated by the red line running across the bar graph. The numbers at the top of each bar represent how much over or under the national average the community rates for this offense.

## Havertown Crime





# Weather and Environmental Details

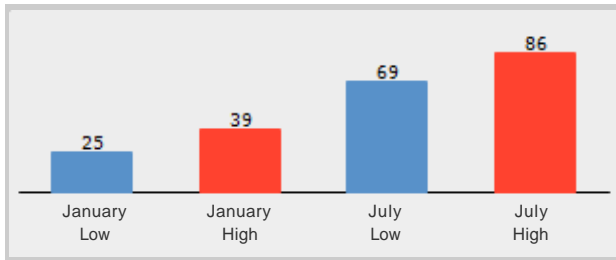
Part 7

**Weather Report** includes information collected from US Census data and other data collection agencies and shows the weather information for the communities you have selected. Included are temperature highs and lows averaged for the months of January and July for each community.

**Environmental Details** includes information collected from US Census data and other data collection agencies and shows the environmental details for the communities you have selected. The information at the base of each bar on the bar graph denotes the type of weather risk that colored bar represents. The information at the top of the community bar graph indicates how that total compares to the national average for that type of weather risk.

The national average is represented as "100" and is indicated by a red line running across the bar graph. The numbers at the top of each bar represent how much over or under the national average the community rates for this weather risk.

## Havertown Weather



## Havertown Environmental Risk

