



Introduction

Part 1

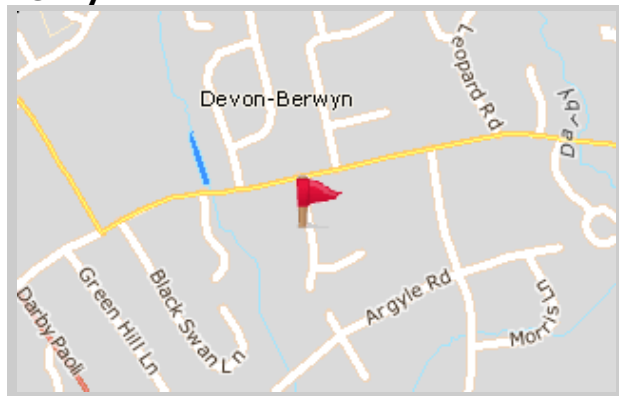
This Relocation Report is designed to provide information about the economic and social structures of the selected communities. This report will compare the social and economic conditions of two communities, each containing 1 or more zip codes. Information used in this report has been broken down to the zip code level. If more than one zip code has been selected for a community, the information displayed will be an average of all the information from the zip codes that make up that "community."

The information found in this report has been compiled and collected from the US Census and other data collection agencies.

The maps below show the center of the communities that are represented in this report.

Berwyn
19312 - Pennsylvania
National Average
USA

Berwyn





Population and Housing

Part 2

This report shows information collected from US Census data and other data collection agencies and is broken down into five general categories: Population, Community Summary, Housing, Housing Stability and the Population Age Demographics Chart.

The Population Age Demographics chart is broken down by community and age group with each bar on the bar graph denoting an age group and the information on top of the bar indicating the number of people in that community for each age group.

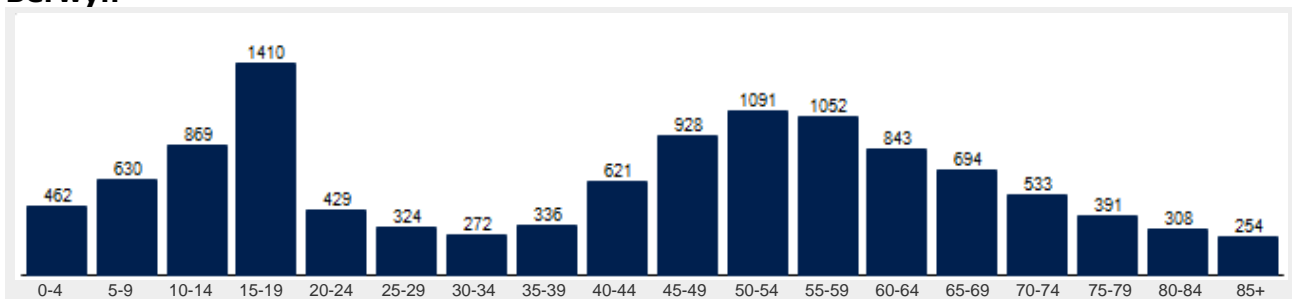
Population	Berwyn	National
Male	47.7 %	49.2 %
Female	52.3 %	50.8 %
Total Population	11,446	317,504,602
Median Age	47	38

Housing	Berwyn	National
Vacant Dwellings	214	13,735,766
Owner Occupied	3,623	78,220,269
Renter Occupied	674	41,845,751

Community Summary	Berwyn	National
Population Growth (since 2000)	1.1 %	12.8 %
Population Density (ppl / mile)	1,208	90
Household Size (ppl)	2.67	2.58
Households w/ Children	37 %	30 %
Annual Residential Turnover	6 %	15 %

Fair Market Rents	Berwyn	Chester County
Studio	\$1,050	\$814
One Bedroom	\$1,237	\$959
Two Bedroom	\$1,491	\$1,156
Three Bedroom	\$1,858	\$1,440
Four Bedroom	\$1,994	\$1,546

Berwyn





Community Overview

Part 3

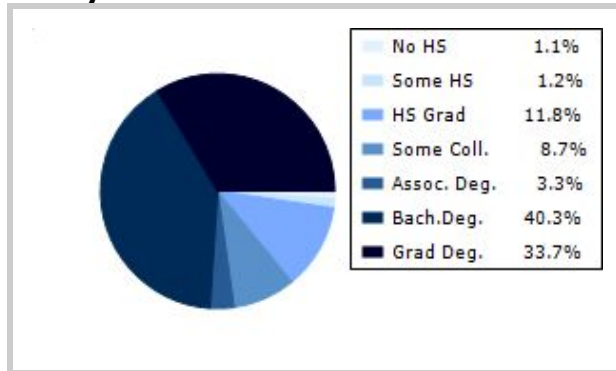
This report shows information collected from US Census and other data collection agencies and is broken down into three general categories: Racial Profile, Marital Status and Education. Each of these categories has been broken down into subcategories making it easy to do a side by side comparison of the two communities.

Education information for both communities has been broken out into two bar graphs. The information at the base of each bar on the bar graph denotes the level of education that colored bar represents. The information to the left of the community bar graph indicates the number of people in that community that have achieved that level of education.

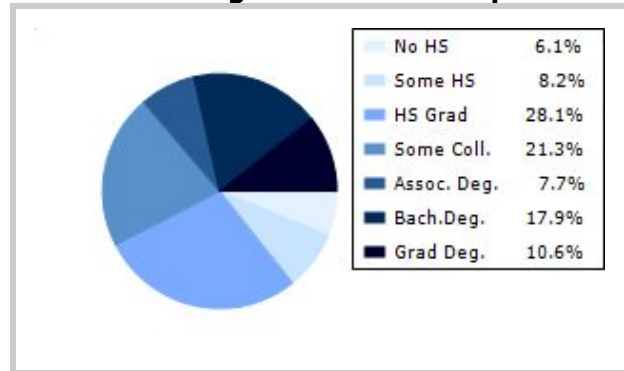
Racial Profile	Berwyn	National
White	10,272	229,894,228
African American	268	39,728,359
American Indian, Eskimo, Aleut	4	3,151,782
Asian or Pacific Islander	742	15,288,513
Hawaiian	1	641,051
Other	57	18,461,772

Marital Status	Berwyn	National
Never Married	22.2 %	31.8 %
Now Married	65.6 %	49.2 %
Separated	1.0 %	2.2 %
Widowed	5.2 %	6.0 %
Divorced	6.1 %	10.7 %
No Family	2.0 %	4.9 %
With Family	49.0 %	47.5 %
With Children	23.9 %	21.4 %
No Children	25.1 %	26.2 %

Berwyn



National Average Educational Report





Financial Report

Part 4

This report shows information collected from US Census and other data collection agencies and is broken down into six general categories; Median Income, Income, Household Expenses and Median Asset Values. Each of these categories has been broken down into subcategories making it easy to do a side by side comparison of the two communities.

Median Household Income*	Berwyn	National
Age < 25	\$69,987	\$27,240
Age 25 - 44	\$155,898	\$59,626
Age 45 - 64	\$158,839	\$65,864
Age 65+	\$77,718	\$37,196

* by primary householder age.

Income	Berwyn	National (in MM)
< 10K	159	8
10K-15K	57	6
15K-20K	54	6
20K-25K	127	6
25K-30K	85	6
30K-35K	83	6
35K-40K	73	6
40K-45K	74	6
45K-50K	111	5
50K-60K	225	10
60K-75K	218	12
75K-100K	492	15
100K-125K	423	10
125K-150K	252	6
> 150K	1864	12

Relative Cost Index	Berwyn	National
Contributions	139	100
Personal Insurance	154	100
Apparel	123	100
Education	150	100
Entertainment	131	100
Food And Beverages	116	100
Health Care	117	100
Furnishings	134	100
Shelter	126	100
Household Operations	138	100
Misc Expenses	134	100
Personal Care	126	100
Reading	133	100
Tobacco	92	100
Transportation	121	100
Utilities	116	100
Gifts	138	100
Total Expenses	123	100



Employment Information

This report provides a side by side comparison of the Industries, Occupations and Work Force types for the selected communities. Each of these categories has been broken down into subcategories making it easy to do a side by side comparison of the two communities.

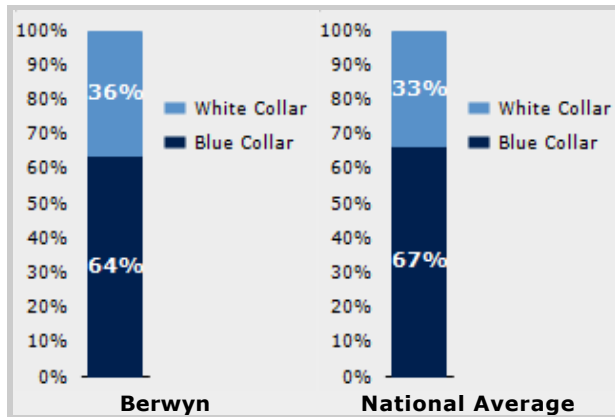
The Industry table to the left shows a breakdown of sixteen different industries and the number of people in each community that are involved in that industry.

The Work Force bar graph below shows the Blue Collar and White Collar percentages for each community, as well as the National Average.

The Occupation table below shows a breakdown of fourteen different occupation classifications and the number of people in each community whose occupation fits that classification.

Industry	Berwyn	National
Agriculture	6	699,703
Mining	7	347,874
Construction	425	6,828,820
Manufacturing	685	11,664,002
Transportation and Communications	46	3,718,051
Wholesale Trade	36	1,817,818
Retail Trade	1,050	21,647,477
Finance, Insurance & Real Estate	1,865	5,785,438
Services	331	8,831,807
Food Services	465	10,239,067
Public Administration	151	8,640,483

Occupation	Berwyn	National
Executive	691	7,810,420
Sales	1,203	17,227,913
Clerical	2,262	25,919,219
Protective Service	66	2,041,240
Arts	162	2,454,555
Social Services	157	4,338,751
Education	169	4,915,376
Health Care	183	4,273,471
Legal	312	1,738,122
Government	0	1,522,109
Computer Science	386	2,290,801
Finance	655	4,944,436



Transportation to Work	Berwyn	National
Public	399	6,079,053
Drive	4,261	97,304,402
Carpool	290	15,662,618
Walk	25	3,769,819
Bike	0	489,598
Work at Home	412	3,927,567
Average Time to Work	24.0	25.0



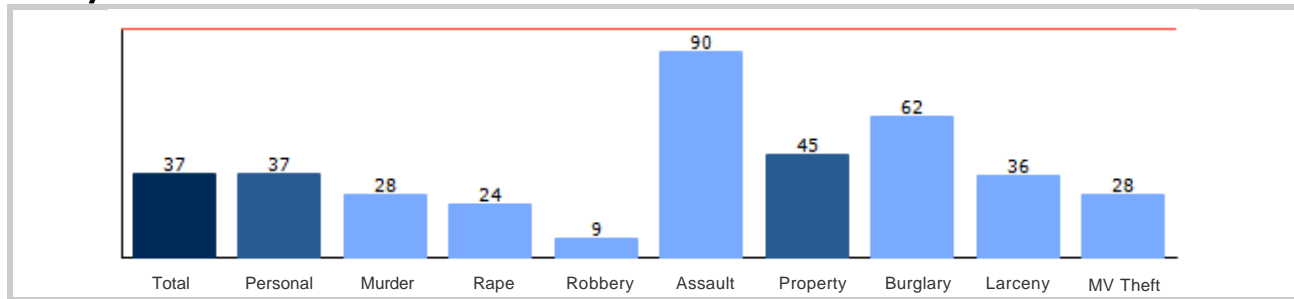
Community Crime Information

Part 6

This report shows information collected from US Census data and other data collection agencies and is broken down by community and by type of crime, and includes a Total Crime total as well. The information at the base of each bar on the bar graph denotes the type of crime that colored bar represents. The information at the top of the community bar graph indicates how that total compares to the national average for that type of offense.

The national average is represented as "100" and is indicated by the red line running across the bar graph. The numbers at the top of each bar represent how much over or under the national average the community rates for this offense.

Berwyn Crime





Weather and Environmental Details

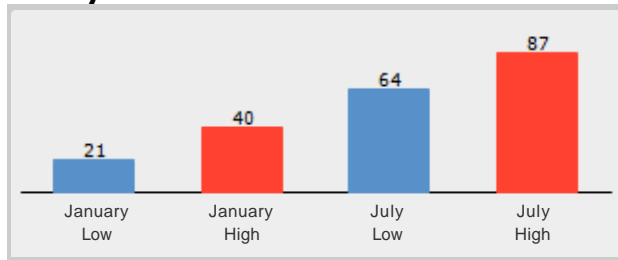
Part 7

Weather Report includes information collected from US Census data and other data collection agencies and shows the weather information for the communities you have selected. Included are temperature highs and lows averaged for the months of January and July for each community.

Environmental Details includes information collected from US Census data and other data collection agencies and shows the environmental details for the communities you have selected. The information at the base of each bar on the bar graph denotes the type of weather risk that colored bar represents. The information at the top of the community bar graph indicates how that total compares to the national average for that type of weather risk.

The national average is represented as "100" and is indicated by a red line running across the bar graph. The numbers at the top of each bar represent how much over or under the national average the community rates for this weather risk.

Berwyn Weather



Berwyn Environmental Risk

