



Introduction

Part 1

This Relocation Report is designed to provide information about the economic and social structures of the selected communities. This report will compare the social and economic conditions of two communities, each containing 1 or more zip codes. Information used in this report has been broken down to the zip code level. If more than one zip code has been selected for a community, the information displayed will be an average of all the information from the zip codes that make up that "community."

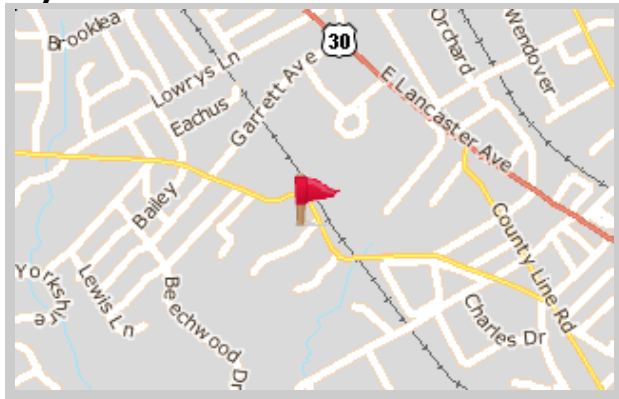
The information found in this report has been compiled and collected from the US Census and other data collection agencies.

The maps below show the center of the communities that are represented in this report.

Bryn Mawr
19010 - Pennsylvania

National Average
USA

Bryn Mawr





Population and Housing

Part 2

This report shows information collected from US Census data and other data collection agencies and is broken down into five general categories: Population, Community Summary, Housing, Housing Stability and the Population Age Demographics Chart.

The Population Age Demographics chart is broken down by community and age group with each bar on the bar graph denoting an age group and the information on top of the bar indicating the number of people in that community for each age group.

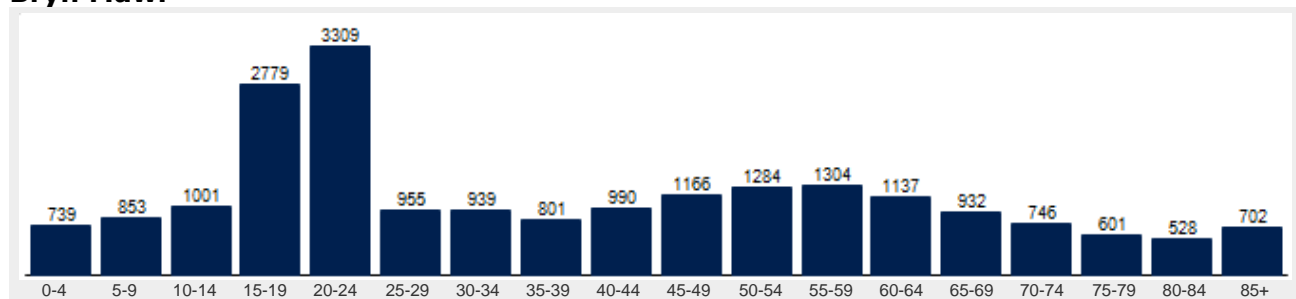
Population	Bryn Mawr	National
Male	43.7 %	49.2 %
Female	56.3 %	50.8 %
Total Population	20,766	317,504,602
Median Age	34	38

Housing	Bryn Mawr	National
Vacant Dwellings	588	13,735,766
Owner Occupied	4,747	78,220,269
Renter Occupied	2,846	41,845,751

Community Summary	Bryn Mawr	National
Population Growth (since 2000)	-1.7 %	12.8 %
Population Density (ppl / mile)	2,464	90
Household Size (ppl)	2.31	2.58
Households w/ Children	25 %	30 %
Annual Residential Turnover	16 %	15 %

Fair Market Rents	Bryn Mawr	Delaware County
Studio	\$610	\$814
One Bedroom	\$719	\$959
Two Bedroom	\$867	\$1,156
Three Bedroom	\$1,080	\$1,440
Four Bedroom	\$1,160	\$1,546

Bryn Mawr





Community Overview

Part 3

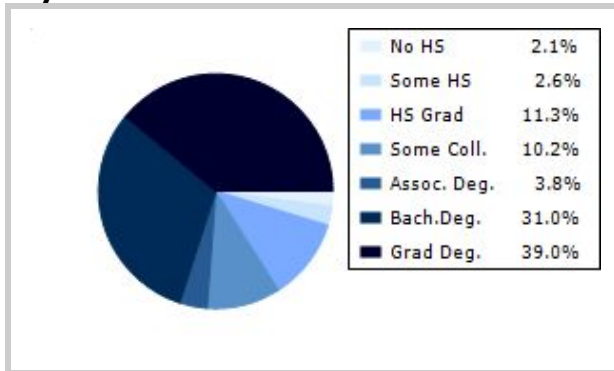
This report shows information collected from US Census and other data collection agencies and is broken down into three general categories: Racial Profile, Marital Status and Education. Each of these categories has been broken down into subcategories making it easy to do a side by side comparison of the two communities.

Education information for both communities has been broken out into two bar graphs. The information at the base of each bar on the bar graph denotes the level of education that colored bar represents. The information to the left of the community bar graph indicates the number of people in that community that have achieved that level of education.

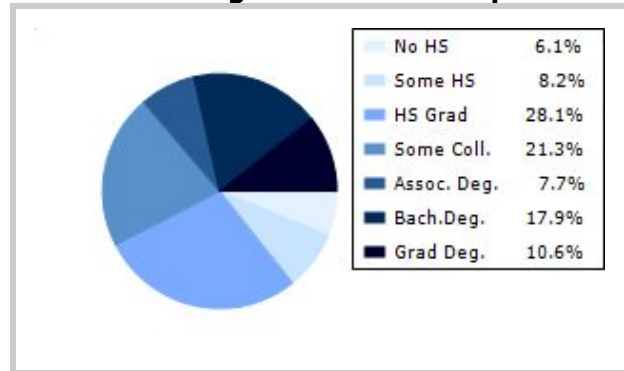
Racial Profile	Bryn Mawr	National
White	17,179	229,894,228
African American	1,228	39,728,359
American Indian, Eskimo, Aleut	16	3,151,782
Asian or Pacific Islander	1,778	15,288,513
Hawaiian	3	641,051
Other	165	18,461,772

Marital Status	Bryn Mawr	National
Never Married	42.8 %	31.8 %
Now Married	43.2 %	49.2 %
Separated	1.6 %	2.2 %
Widowed	6.5 %	6.0 %
Divorced	6.0 %	10.7 %
No Family	8.4 %	4.9 %
With Family	45.8 %	47.5 %
With Children	20.2 %	21.4 %
No Children	25.6 %	26.2 %

Bryn Mawr



National Average Educational Report





Financial Report

Part 4

This report shows information collected from US Census and other data collection agencies and is broken down into six general categories; Median Income, Income, Household Expenses and Median Asset Values. Each of these categories has been broken down into subcategories making it easy to do a side by side comparison of the two communities.

Median Household Income*	Bryn Mawr	National
Age < 25	\$9,735	\$27,240
Age 25 - 44	\$104,350	\$59,626
Age 45 - 64	\$135,623	\$65,864
Age 65+	\$72,623	\$37,196

* by primary householder age.

Income	Bryn Mawr	National (in MM)
< 10K	434	8
10K-15K	204	6
15K-20K	190	6
20K-25K	257	6
25K-30K	213	6
30K-35K	258	6
35K-40K	281	6
40K-45K	220	6
45K-50K	131	5
50K-60K	272	10
60K-75K	655	12
75K-100K	661	15
100K-125K	764	10
125K-150K	511	6
> 150K	2542	12

Relative Cost Index	Bryn Mawr	National
Contributions	144	100
Personal Insurance	149	100
Apparel	130	100
Education	163	100
Entertainment	139	100
Food And Beverages	124	100
Health Care	118	100
Furnishings	136	100
Shelter	134	100
Household Operations	143	100
Misc Expenses	136	100
Personal Care	131	100
Reading	138	100
Tobacco	107	100
Transportation	129	100
Utilities	131	100
Gifts	146	100
Total Expenses	131	100



Employment Information

This report provides a side by side comparison of the Industries, Occupations and Work Force types for the selected communities. Each of these categories has been broken down into subcategories making it easy to do a side by side comparison of the two communities.

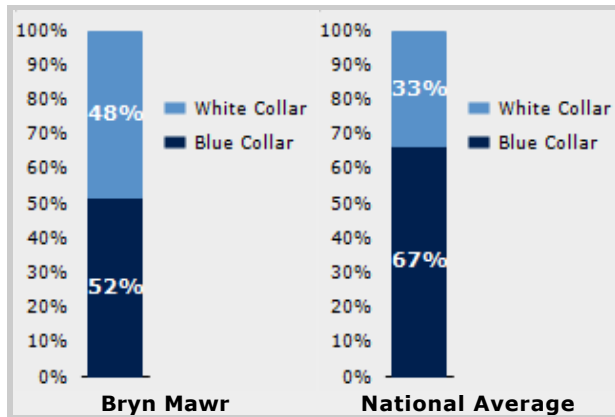
The Industry table to the left shows a breakdown of sixteen different industries and the number of people in each community that are involved in that industry.

The Work Force bar graph below shows the Blue Collar and White Collar percentages for each community, as well as the National Average.

The Occupation table below shows a breakdown of fourteen different occupation classifications and the number of people in each community whose occupation fits that classification.

Industry	Bryn Mawr	National
Agriculture	2	699,703
Mining	0	347,874
Construction	392	6,828,820
Manufacturing	412	11,664,002
Transportation and Communications	5	3,718,051
Wholesale Trade	11	1,817,818
Retail Trade	561	21,647,477
Finance, Insurance & Real Estate	347	5,785,438
Services	549	8,831,807
Food Services	1,108	10,239,067
Public Administration	275	8,640,483

Occupation	Bryn Mawr	National
Executive	764	7,810,420
Sales	689	17,227,913
Clerical	2,849	25,919,219
Protective Service	186	2,041,240
Arts	157	2,454,555
Social Services	934	4,338,751
Education	492	4,915,376
Health Care	920	4,273,471
Legal	54	1,738,122
Government	0	1,522,109
Computer Science	156	2,290,801
Finance	367	4,944,436



Transportation to Work	Bryn Mawr	National
Public	935	6,079,053
Drive	6,086	97,304,402
Carpool	448	15,662,618
Walk	1,193	3,769,819
Bike	26	489,598
Work at Home	466	3,927,567
Average Time to Work	23.0	25.0



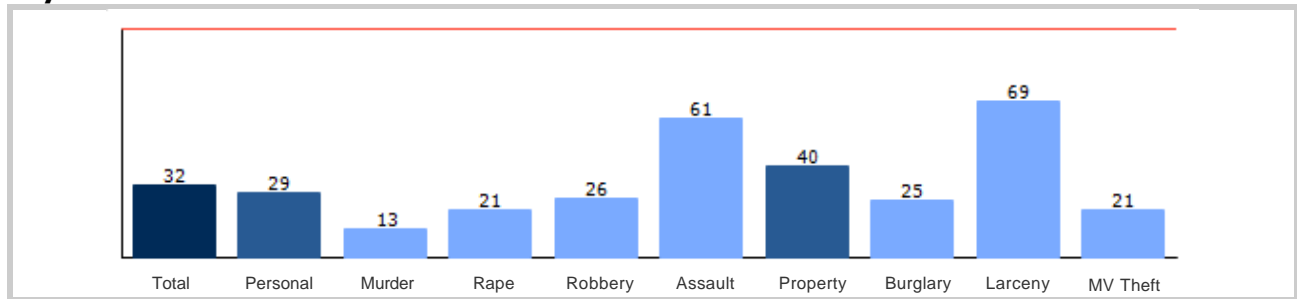
Community Crime Information

Part 6

This report shows information collected from US Census data and other data collection agencies and is broken down by community and by type of crime, and includes a Total Crime total as well. The information at the base of each bar on the bar graph denotes the type of crime that colored bar represents. The information at the top of the community bar graph indicates how that total compares to the national average for that type of offense.

The national average is represented as "100" and is indicated by the red line running across the bar graph. The numbers at the top of each bar represent how much over or under the national average the community rates for this offense.

Bryn Mawr Crime





Weather and Environmental Details

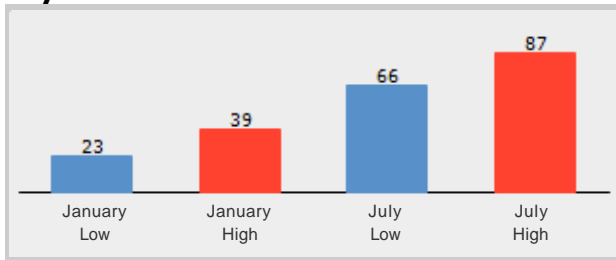
Part 7

Weather Report includes information collected from US Census data and other data collection agencies and shows the weather information for the communities you have selected. Included are temperature highs and lows averaged for the months of January and July for each community.

Environmental Details includes information collected from US Census data and other data collection agencies and shows the environmental details for the communities you have selected. The information at the base of each bar on the bar graph denotes the type of weather risk that colored bar represents. The information at the top of the community bar graph indicates how that total compares to the national average for that type of weather risk.

The national average is represented as "100" and is indicated by a red line running across the bar graph. The numbers at the top of each bar represent how much over or under the national average the community rates for this weather risk.

Bryn Mawr Weather



Bryn Mawr Environmental Risk

