



Introduction

Part 1

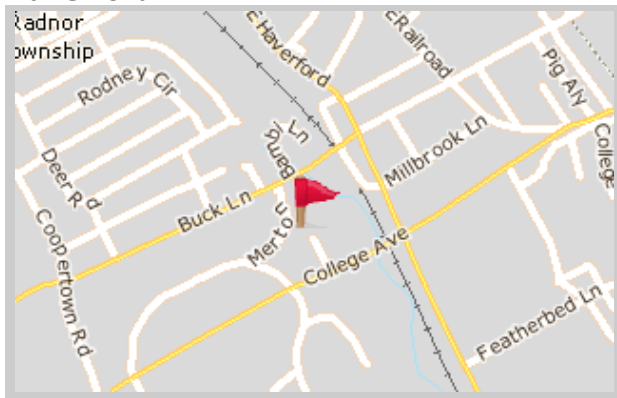
This Relocation Report is designed to provide information about the economic and social structures of the selected communities. This report will compare the social and economic conditions of two communities, each containing 1 or more zip codes. Information used in this report has been broken down to the zip code level. If more than one zip code has been selected for a community, the information displayed will be an average of all the information from the zip codes that make up that "community."

The information found in this report has been compiled and collected from the US Census and other data collection agencies.

The maps below show the center of the communities that are represented in this report.

Haverford
19041 - Pennsylvania
National Average
USA

Haverford





Population and Housing

Part 2

This report shows information collected from US Census data and other data collection agencies and is broken down into five general categories: Population, Community Summary, Housing, Housing Stability and the Population Age Demographics Chart.

The Population Age Demographics chart is broken down by community and age group with each bar on the bar graph denoting an age group and the information on top of the bar indicating the number of people in that community for each age group.

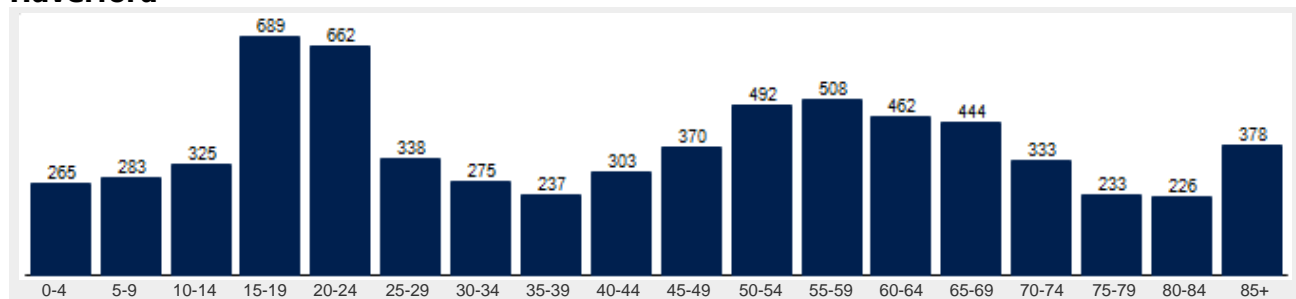
Population	Haverford	National
Male	45.8 %	49.2 %
Female	54.2 %	50.8 %
Total Population	6,823	317,504,602
Median Age	45	38

Housing	Haverford	National
Vacant Dwellings	191	13,735,766
Owner Occupied	1,864	78,220,269
Renter Occupied	844	41,845,751

Community Summary	Haverford	National
Population Growth (since 2000)	-1.1 %	12.8 %
Population Density (ppl / mile)	2,066	90
Household Size (ppl)	2.21	2.58
Households w/ Children	21 %	30 %
Annual Residential Turnover	15 %	15 %

Fair Market Rents	Haverford	Delaware County
Studio	\$562	\$814
One Bedroom	\$662	\$959
Two Bedroom	\$798	\$1,156
Three Bedroom	\$994	\$1,440
Four Bedroom	\$1,067	\$1,546

Haverford





Community Overview

Part 3

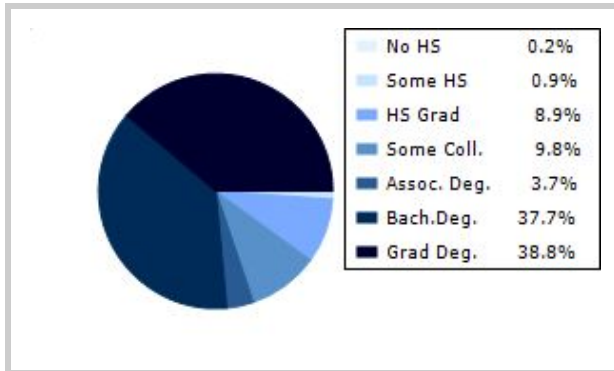
This report shows information collected from US Census and other data collection agencies and is broken down into three general categories: Racial Profile, Marital Status and Education. Each of these categories has been broken down into subcategories making it easy to do a side by side comparison of the two communities.

Education information for both communities has been broken out into two bar graphs. The information at the base of each bar on the bar graph denotes the level of education that colored bar represents. The information to the left of the community bar graph indicates the number of people in that community that have achieved that level of education.

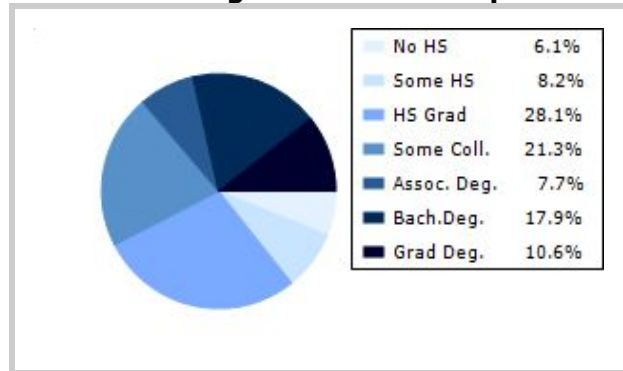
Racial Profile	Haverford	National
White	6,098	229,894,228
African American	239	39,728,359
American Indian, Eskimo, Aleut	5	3,151,782
Asian or Pacific Islander	293	15,288,513
Hawaiian	1	641,051
Other	56	18,461,772

Marital Status	Haverford	National
Never Married	37.7 %	31.8 %
Now Married	47.4 %	49.2 %
Separated	0.9 %	2.2 %
Widowed	9.1 %	6.0 %
Divorced	4.9 %	10.7 %
No Family	4.8 %	4.9 %
With Family	47.6 %	47.5 %
With Children	17.6 %	21.4 %
No Children	30.0 %	26.2 %

Haverford



National Average Educational Report





Financial Report

Part 4

This report shows information collected from US Census and other data collection agencies and is broken down into six general categories; Median Income, Income, Household Expenses and Median Asset Values. Each of these categories has been broken down into subcategories making it easy to do a side by side comparison of the two communities.

Median Household Income*	Haverford	National
Age < 25	\$11,535	\$27,240
Age 25 - 44	\$105,466	\$59,626
Age 45 - 64	\$160,523	\$65,864
Age 65+	\$104,083	\$37,196

* by primary householder age.

Income	Haverford	National (in MM)
< 10K	81	8
10K-15K	23	6
15K-20K	75	6
20K-25K	44	6
25K-30K	62	6
30K-35K	76	6
35K-40K	59	6
40K-45K	65	6
45K-50K	54	5
50K-60K	112	10
60K-75K	134	12
75K-100K	326	15
100K-125K	261	10
125K-150K	254	6
> 150K	1081	12

Relative Cost Index	Haverford	National
Contributions	129	100
Personal Insurance	139	100
Apparel	111	100
Education	131	100
Entertainment	121	100
Food And Beverages	107	100
Health Care	105	100
Furnishings	120	100
Shelter	117	100
Household Operations	126	100
Misc Expenses	121	100
Personal Care	114	100
Reading	122	100
Tobacco	84	100
Transportation	110	100
Utilities	112	100
Gifts	132	100
Total Expenses	113	100



Employment Information

This report provides a side by side comparison of the Industries, Occupations and Work Force types for the selected communities. Each of these categories has been broken down into subcategories making it easy to do a side by side comparison of the two communities.

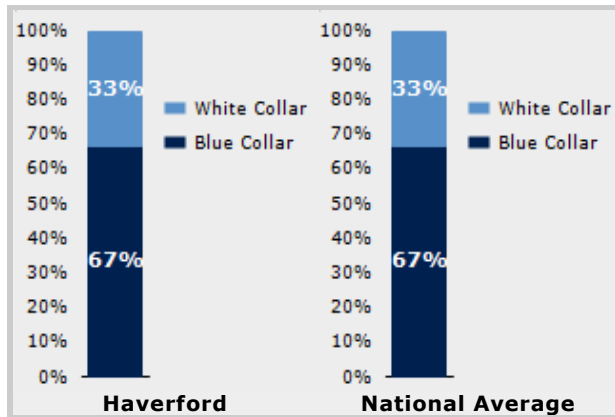
The Industry table to the left shows a breakdown of sixteen different industries and the number of people in each community that are involved in that industry.

The Work Force bar graph below shows the Blue Collar and White Collar percentages for each community, as well as the National Average.

The Occupation table below shows a breakdown of fourteen different occupation classifications and the number of people in each community whose occupation fits that classification.

Industry	Haverford	National
Agriculture	0	699,703
Mining	0	347,874
Construction	95	6,828,820
Manufacturing	229	11,664,002
Transportation and Communications	0	3,718,051
Wholesale Trade	11	1,817,818
Retail Trade	608	21,647,477
Finance, Insurance & Real Estate	187	5,785,438
Services	341	8,831,807
Food Services	175	10,239,067
Public Administration	50	8,640,483

Occupation	Haverford	National
Executive	241	7,810,420
Sales	472	17,227,913
Clerical	711	25,919,219
Protective Service	41	2,041,240
Arts	58	2,454,555
Social Services	129	4,338,751
Education	161	4,915,376
Health Care	97	4,273,471
Legal	55	1,738,122
Government	0	1,522,109
Computer Science	60	2,290,801
Finance	144	4,944,436



Transportation to Work	Haverford	National
Public	284	6,079,053
Drive	2,040	97,304,402
Carpool	231	15,662,618
Walk	110	3,769,819
Bike	3	489,598
Work at Home	165	3,927,567
Average Time to Work	25.0	25.0



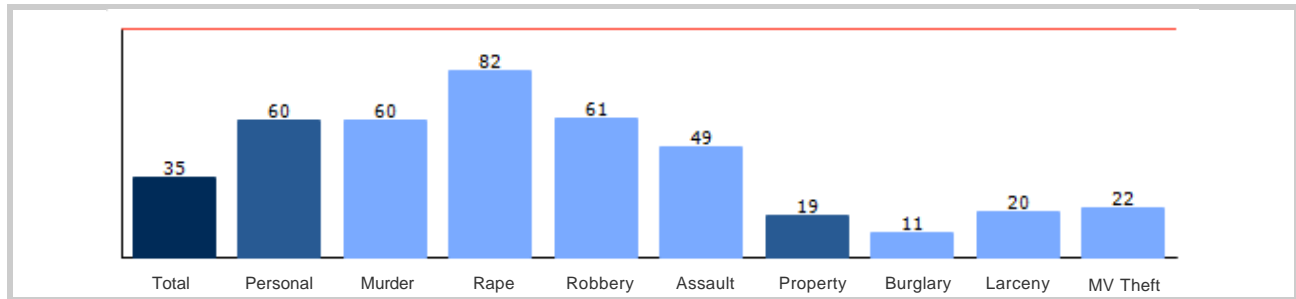
Community Crime Information

Part 6

This report shows information collected from US Census data and other data collection agencies and is broken down by community and by type of crime, and includes a Total Crime total as well. The information at the base of each bar on the bar graph denotes the type of crime that colored bar represents. The information at the top of the community bar graph indicates how that total compares to the national average for that type of offense.

The national average is represented as "100" and is indicated by the red line running across the bar graph. The numbers at the top of each bar represent how much over or under the national average the community rates for this offense.

Haverford Crime





Weather and Environmental Details

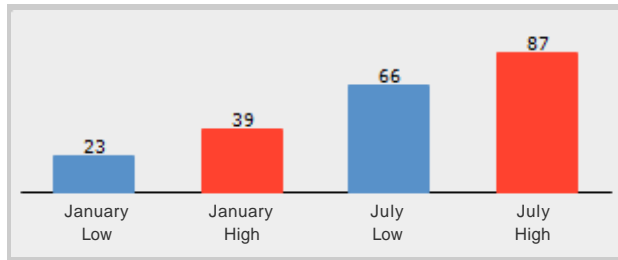
Part 7

Weather Report includes information collected from US Census data and other data collection agencies and shows the weather information for the communities you have selected. Included are temperature highs and lows averaged for the months of January and July for each community.

Environmental Details includes information collected from US Census data and other data collection agencies and shows the environmental details for the communities you have selected. The information at the base of each bar on the bar graph denotes the type of weather risk that colored bar represents. The information at the top of the community bar graph indicates how that total compares to the national average for that type of weather risk.

The national average is represented as "100" and is indicated by a red line running across the bar graph. The numbers at the top of each bar represent how much over or under the national average the community rates for this weather risk.

Haverford Weather



Haverford Environmental Risk

