



Introduction

Part 1

This Relocation Report is designed to provide information about the economic and social structures of the selected communities. This report will compare the social and economic conditions of two communities, each containing 1 or more zip codes. Information used in this report has been broken down to the zip code level. If more than one zip code has been selected for a community, the information displayed will be an average of all the information from the zip codes that make up that "community."

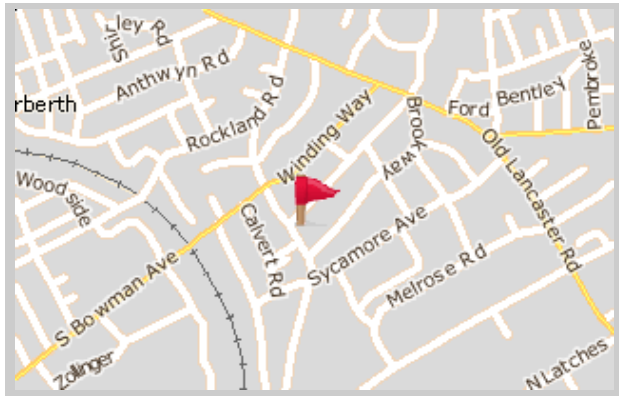
The information found in this report has been compiled and collected from the US Census and other data collection agencies.

The maps below show the center of the communities that are represented in this report.

Merion Station
19066 - Pennsylvania

National Average
USA

Merion Station





Population and Housing

Part 2

This report shows information collected from US Census data and other data collection agencies and is broken down into five general categories: Population, Community Summary, Housing, Housing Stability and the Population Age Demographics Chart.

The Population Age Demographics chart is broken down by community and age group with each bar on the bar graph denoting an age group and the information on top of the bar indicating the number of people in that community for each age group.

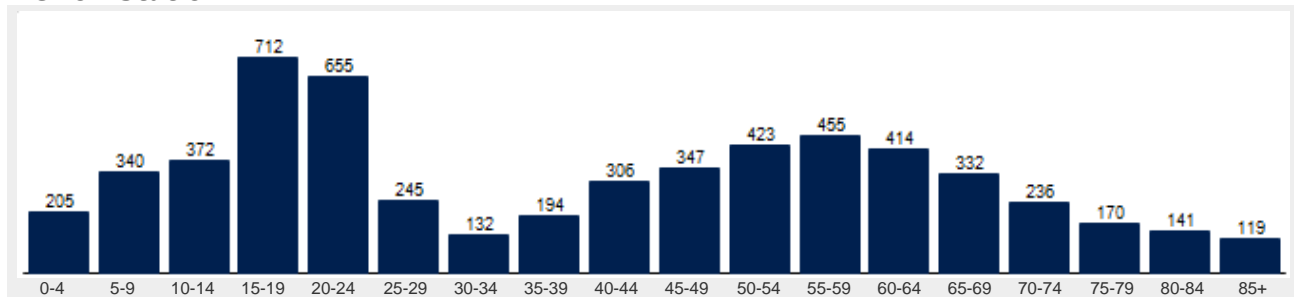
Population	Merion Station	National
Male	47.5 %	49.2 %
Female	52.5 %	50.8 %
Total Population	5,798	317,504,602
Median Age	41	38

Housing	Merion Station	National
Vacant Dwellings	69	13,735,766
Owner Occupied	1,602	78,220,269
Renter Occupied	141	41,845,751

Community Summary	Merion Station	National
Population Growth (since 2000)	-0.3 %	12.8 %
Population Density (ppl / mile)	4,248	90
Household Size (ppl)	2.81	2.58
Households w/ Children	42 %	30 %
Annual Residential Turnover	12 %	15 %

Fair Market Rents	Merion Station	Montgomery County
Studio	\$2,475	\$814
One Bedroom	\$2,915	\$959
Two Bedroom	\$3,514	\$1,156
Three Bedroom	\$4,378	\$1,440
Four Bedroom	\$4,700	\$1,546

Merion Station





Community Overview

Part 3

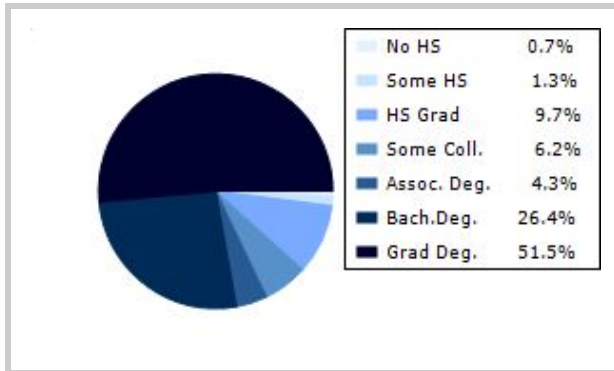
This report shows information collected from US Census and other data collection agencies and is broken down into three general categories: Racial Profile, Marital Status and Education. Each of these categories has been broken down into subcategories making it easy to do a side by side comparison of the two communities.

Education information for both communities has been broken out into two bar graphs. The information at the base of each bar on the bar graph denotes the level of education that colored bar represents. The information to the left of the community bar graph indicates the number of people in that community that have achieved that level of education.

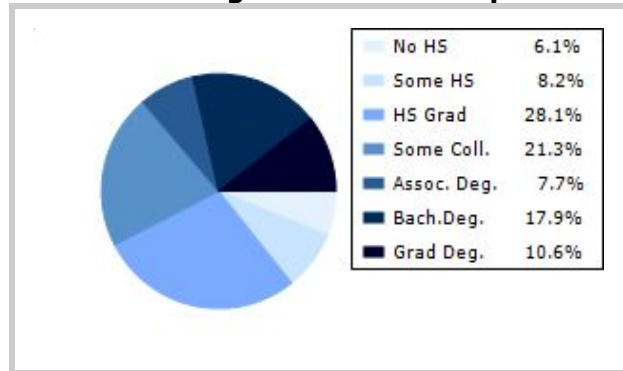
Racial Profile	Merion Station	National
White	5,328	229,894,228
African American	132	39,728,359
American Indian, Eskimo, Aleut	5	3,151,782
Asian or Pacific Islander	224	15,288,513
Hawaiian	1	641,051
Other	31	18,461,772

Marital Status	Merion Station	National
Never Married	31.7 %	31.8 %
Now Married	58.6 %	49.2 %
Separated	0.9 %	2.2 %
Widowed	3.7 %	6.0 %
Divorced	5.1 %	10.7 %
No Family	1.5 %	4.9 %
With Family	49.2 %	47.5 %
With Children	25.5 %	21.4 %
No Children	23.7 %	26.2 %

Merion Station



National Average Educational Report





Financial Report

Part 4

This report shows information collected from US Census and other data collection agencies and is broken down into six general categories; Median Income, Income, Household Expenses and Median Asset Values. Each of these categories has been broken down into subcategories making it easy to do a side by side comparison of the two communities.

Median Household Income*	Merion Station	National
Age < 25	\$6,167	\$27,240
Age 25 - 44	\$149,679	\$59,626
Age 45 - 64	\$164,246	\$65,864
Age 65+	\$133,741	\$37,196

* by primary householder age.

Income	Merion Station	National (in MM)
< 10K	30	8
10K-15K	15	6
15K-20K	18	6
20K-25K	23	6
25K-30K	8	6
30K-35K	7	6
35K-40K	9	6
40K-45K	4	6
45K-50K	53	5
50K-60K	94	10
60K-75K	91	12
75K-100K	164	15
100K-125K	181	10
125K-150K	144	6
> 150K	901	12

Relative Cost Index	Merion Station	National
Contributions	185	100
Personal Insurance	205	100
Apparel	161	100
Education	208	100
Entertainment	175	100
Food And Beverages	150	100
Health Care	143	100
Furnishings	175	100
Shelter	166	100
Household Operations	184	100
Misc Expenses	173	100
Personal Care	161	100
Reading	171	100
Tobacco	111	100
Transportation	157	100
Utilities	154	100
Gifts	181	100
Total Expenses	161	100



Employment Information

This report provides a side by side comparison of the Industries, Occupations and Work Force types for the selected communities. Each of these categories has been broken down into subcategories making it easy to do a side by side comparison of the two communities.

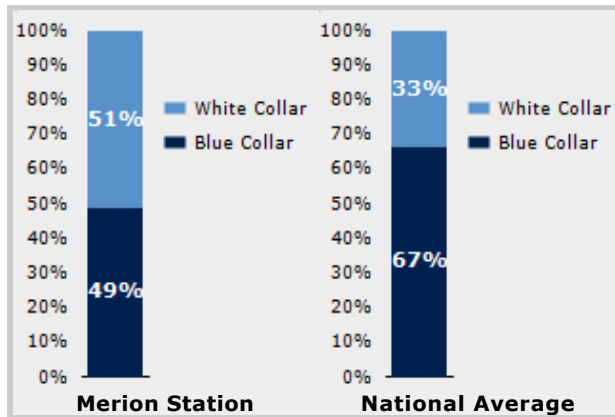
The Industry table to the left shows a breakdown of sixteen different industries and the number of people in each community that are involved in that industry.

The Work Force bar graph below shows the Blue Collar and White Collar percentages for each community, as well as the National Average.

The Occupation table below shows a breakdown of fourteen different occupation classifications and the number of people in each community whose occupation fits that classification.

Industry	Merion Station	National
Agriculture	0	699,703
Mining	0	347,874
Construction	12	6,828,820
Manufacturing	60	11,664,002
Transportation and Communications	0	3,718,051
Wholesale Trade	4	1,817,818
Retail Trade	43	21,647,477
Finance, Insurance & Real Estate	31	5,785,438
Services	379	8,831,807
Food Services	55	10,239,067
Public Administration	22	8,640,483

Occupation	Merion Station	National
Executive	50	7,810,420
Sales	55	17,227,913
Clerical	179	25,919,219
Protective Service	6	2,041,240
Arts	54	2,454,555
Social Services	142	4,338,751
Education	100	4,915,376
Health Care	20	4,273,471
Legal	5	1,738,122
Government	0	1,522,109
Computer Science	13	2,290,801
Finance	25	4,944,436



Transportation to Work	Merion Station	National
Public	327	6,079,053
Drive	1,827	97,304,402
Carpool	226	15,662,618
Walk	154	3,769,819
Bike	0	489,598
Work at Home	180	3,927,567
Average Time to Work	26.0	25.0



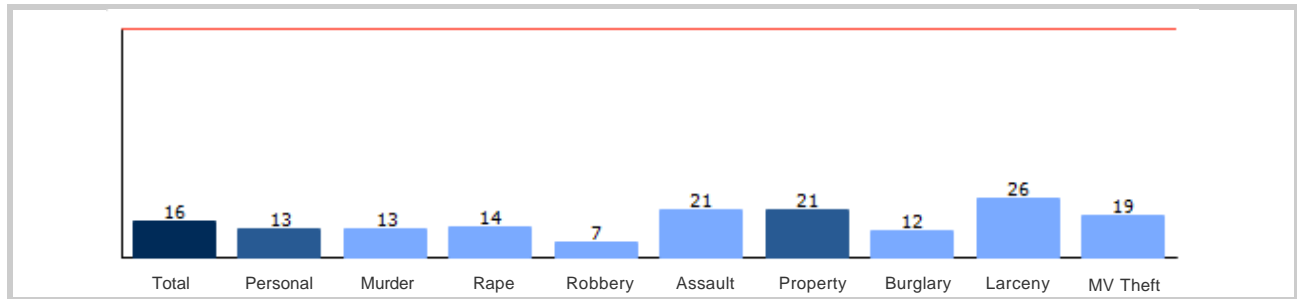
Community Crime Information

Part 6

This report shows information collected from US Census data and other data collection agencies and is broken down by community and by type of crime, and includes a Total Crime total as well. The information at the base of each bar on the bar graph denotes the type of crime that colored bar represents. The information at the top of the community bar graph indicates how that total compares to the national average for that type of offense.

The national average is represented as "100" and is indicated by the red line running across the bar graph. The numbers at the top of each bar represent how much over or under the national average the community rates for this offense.

Merion Station Crime





Weather and Environmental Details

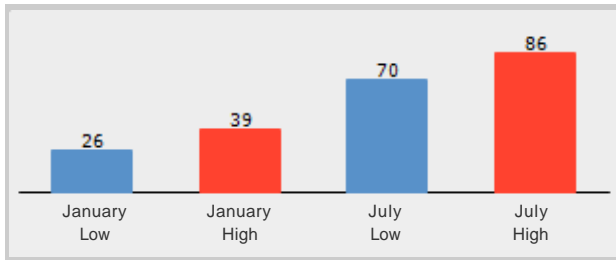
Part 7

Weather Report includes information collected from US Census data and other data collection agencies and shows the weather information for the communities you have selected. Included are temperature highs and lows averaged for the months of January and July for each community.

Environmental Details includes information collected from US Census data and other data collection agencies and shows the environmental details for the communities you have selected. The information at the base of each bar on the bar graph denotes the type of weather risk that colored bar represents. The information at the top of the community bar graph indicates how that total compares to the national average for that type of weather risk.

The national average is represented as "100" and is indicated by a red line running across the bar graph. The numbers at the top of each bar represent how much over or under the national average the community rates for this weather risk.

Merion Station Weather



Merion Station Environmental Risk

