



Introduction

Part 1

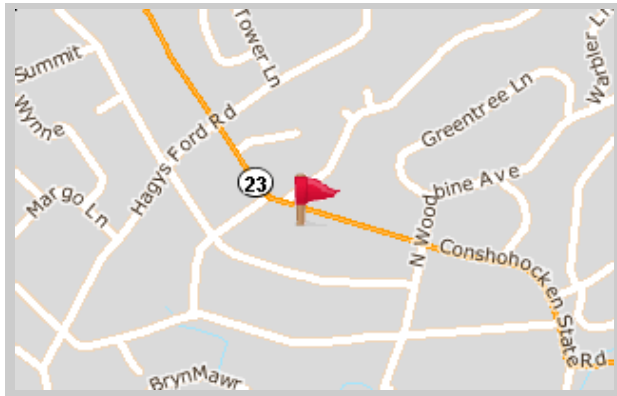
This Relocation Report is designed to provide information about the economic and social structures of the selected communities. This report will compare the social and economic conditions of two communities, each containing 1 or more zip codes. Information used in this report has been broken down to the zip code level. If more than one zip code has been selected for a community, the information displayed will be an average of all the information from the zip codes that make up that "community."

The information found in this report has been compiled and collected from the US Census and other data collection agencies.

The maps below show the center of the communities that are represented in this report.

Narberth
19072 - Pennsylvania
National Average
USA

Narberth





Population and Housing

Part 2

This report shows information collected from US Census data and other data collection agencies and is broken down into five general categories: Population, Community Summary, Housing, Housing Stability and the Population Age Demographics Chart.

The Population Age Demographics chart is broken down by community and age group with each bar on the bar graph denoting an age group and the information on top of the bar indicating the number of people in that community for each age group.

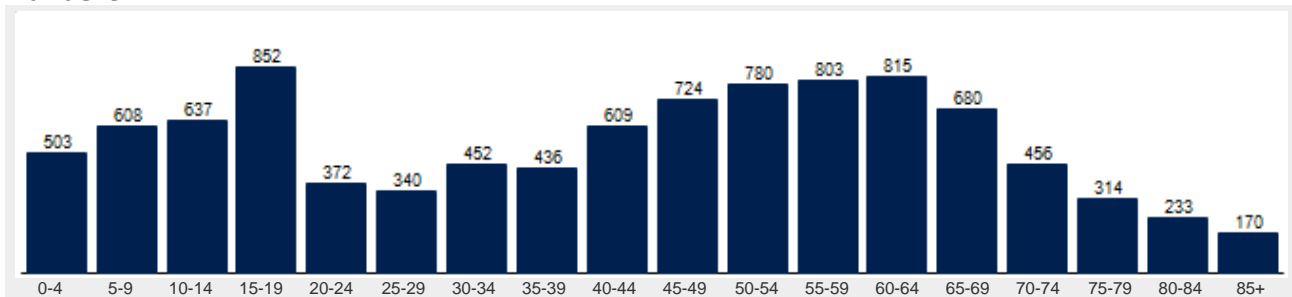
Population	Narberth	National
Male	47.1 %	49.2 %
Female	52.9 %	50.8 %
Total Population	9,785	317,504,602
Median Age	46	38

Housing	Narberth	National
Vacant Dwellings	218	13,735,766
Owner Occupied	3,159	78,220,269
Renter Occupied	1,043	41,845,751

Community Summary	Narberth	National
Population Growth (since 2000)	0.1 %	12.8 %
Population Density (ppl / mile)	3,023	90
Household Size (ppl)	2.33	2.58
Households w/ Children	28 %	30 %
Annual Residential Turnover	13 %	15 %

Fair Market Rents	Narberth	Montgomery County
Studio	\$667	\$814
One Bedroom	\$786	\$959
Two Bedroom	\$948	\$1,156
Three Bedroom	\$1,181	\$1,440
Four Bedroom	\$1,268	\$1,546

Narberth





Community Overview

Part 3

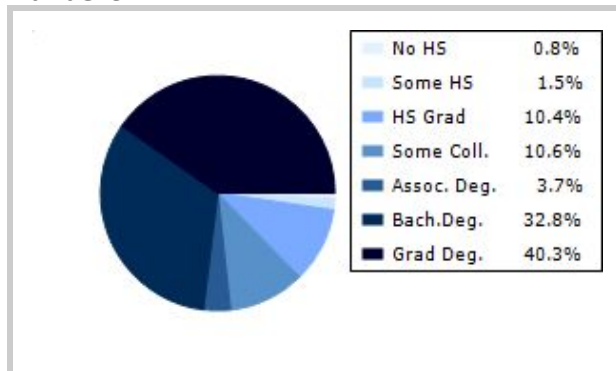
This report shows information collected from US Census and other data collection agencies and is broken down into three general categories: Racial Profile, Marital Status and Education. Each of these categories has been broken down into subcategories making it easy to do a side by side comparison of the two communities.

Education information for both communities has been broken out into two bar graphs. The information at the base of each bar on the bar graph denotes the level of education that colored bar represents. The information to the left of the community bar graph indicates the number of people in that community that have achieved that level of education.

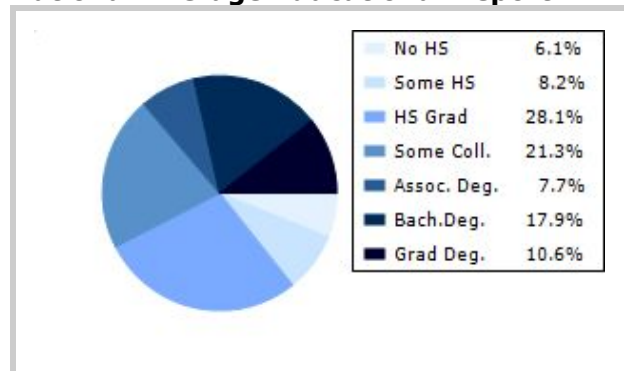
Racial Profile	Narberth	National
White	8,864	229,894,228
African American	227	39,728,359
American Indian, Eskimo, Aleut	3	3,151,782
Asian or Pacific Islander	446	15,288,513
Hawaiian	0	641,051
Other	25	18,461,772

Marital Status	Narberth	National
Never Married	24.9 %	31.8 %
Now Married	58.8 %	49.2 %
Separated	1.0 %	2.2 %
Widowed	5.1 %	6.0 %
Divorced	10.2 %	10.7 %
No Family	4.1 %	4.9 %
With Family	47.9 %	47.5 %
With Children	21.4 %	21.4 %
No Children	26.6 %	26.2 %

Narberth



National Average Educational Report





Financial Report

Part 4

This report shows information collected from US Census and other data collection agencies and is broken down into six general categories; Median Income, Income, Household Expenses and Median Asset Values. Each of these categories has been broken down into subcategories making it easy to do a side by side comparison of the two communities.

Median Household Income*	Narberth	National
Age < 25	\$	\$27,240
Age 25 - 44	\$88,346	\$59,626
Age 45 - 64	\$150,971	\$65,864
Age 65+	\$90,596	\$37,196

* by primary householder age.

Income	Narberth	National (in MM)
< 10K	114	8
10K-15K	36	6
15K-20K	24	6
20K-25K	75	6
25K-30K	97	6
30K-35K	84	6
35K-40K	88	6
40K-45K	220	6
45K-50K	97	5
50K-60K	297	10
60K-75K	319	12
75K-100K	453	15
100K-125K	307	10
125K-150K	361	6
> 150K	1629	12

Relative Cost Index	Narberth	National
Contributions	123	100
Personal Insurance	136	100
Apparel	110	100
Education	127	100
Entertainment	119	100
Food And Beverages	105	100
Health Care	102	100
Furnishings	118	100
Shelter	115	100
Household Operations	123	100
Misc Expenses	117	100
Personal Care	111	100
Reading	117	100
Tobacco	83	100
Transportation	108	100
Utilities	109	100
Gifts	121	100
Total Expenses	111	100



Employment Information

This report provides a side by side comparison of the Industries, Occupations and Work Force types for the selected communities. Each of these categories has been broken down into subcategories making it easy to do a side by side comparison of the two communities.

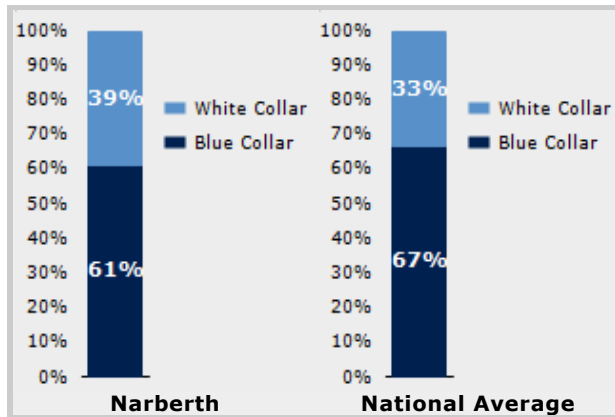
The Industry table to the left shows a breakdown of sixteen different industries and the number of people in each community that are involved in that industry.

The Work Force bar graph below shows the Blue Collar and White Collar percentages for each community, as well as the National Average.

The Occupation table below shows a breakdown of fourteen different occupation classifications and the number of people in each community whose occupation fits that classification.

Industry	Narberth	National
Agriculture	0	699,703
Mining	0	347,874
Construction	82	6,828,820
Manufacturing	131	11,664,002
Transportation and Communications	0	3,718,051
Wholesale Trade	42	1,817,818
Retail Trade	369	21,647,477
Finance, Insurance & Real Estate	47	5,785,438
Services	295	8,831,807
Food Services	115	10,239,067
Public Administration	129	8,640,483

Occupation	Narberth	National
Executive	133	7,810,420
Sales	271	17,227,913
Clerical	439	25,919,219
Protective Service	16	2,041,240
Arts	54	2,454,555
Social Services	97	4,338,751
Education	105	4,915,376
Health Care	119	4,273,471
Legal	22	1,738,122
Government	0	1,522,109
Computer Science	46	2,290,801
Finance	76	4,944,436



Transportation to Work	Narberth	National
Public	477	6,079,053
Drive	3,879	97,304,402
Carpool	342	15,662,618
Walk	154	3,769,819
Bike	23	489,598
Work at Home	244	3,927,567
Average Time to Work	25.0	25.0



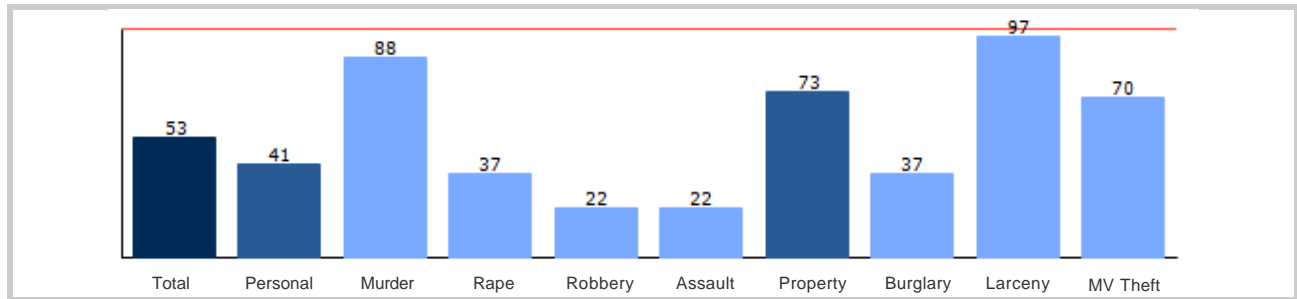
Community Crime Information

Part 6

This report shows information collected from US Census data and other data collection agencies and is broken down by community and by type of crime, and includes a Total Crime total as well. The information at the base of each bar on the bar graph denotes the type of crime that colored bar represents. The information at the top of the community bar graph indicates how that total compares to the national average for that type of offense.

The national average is represented as "100" and is indicated by the red line running across the bar graph. The numbers at the top of each bar represent how much over or under the national average the community rates for this offense.

Narberth Crime





Weather and Environmental Details

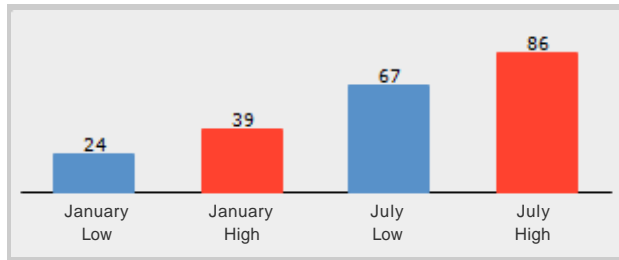
Part 7

Weather Report includes information collected from US Census data and other data collection agencies and shows the weather information for the communities you have selected. Included are temperature highs and lows averaged for the months of January and July for each community.

Environmental Details includes information collected from US Census data and other data collection agencies and shows the environmental details for the communities you have selected. The information at the base of each bar on the bar graph denotes the type of weather risk that colored bar represents. The information at the top of the community bar graph indicates how that total compares to the national average for that type of weather risk.

The national average is represented as "100" and is indicated by a red line running across the bar graph. The numbers at the top of each bar represent how much over or under the national average the community rates for this weather risk.

Narberth Weather



Narberth Environmental Risk

