



Introduction

Part 1

This Relocation Report is designed to provide information about the economic and social structures of the selected communities. This report will compare the social and economic conditions of two communities, each containing 1 or more zip codes. Information used in this report has been broken down to the zip code level. If more than one zip code has been selected for a community, the information displayed will be an average of all the information from the zip codes that make up that "community."

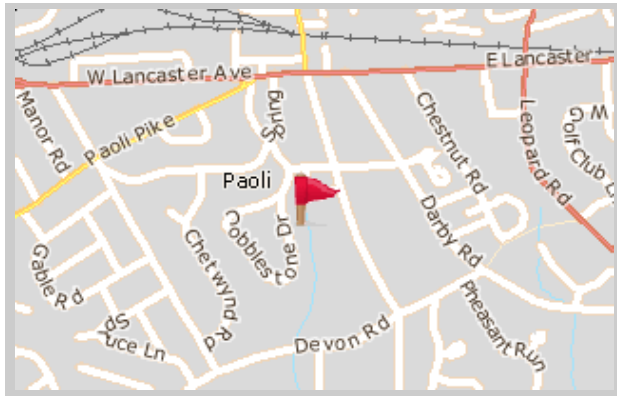
The information found in this report has been compiled and collected from the US Census and other data collection agencies.

The maps below show the center of the communities that are represented in this report.

Paoli
19301 - Pennsylvania

National Average
USA

Paoli





Population and Housing

Part 2

This report shows information collected from US Census data and other data collection agencies and is broken down into five general categories: Population, Community Summary, Housing, Housing Stability and the Population Age Demographics Chart.

The Population Age Demographics chart is broken down by community and age group with each bar on the bar graph denoting an age group and the information on top of the bar indicating the number of people in that community for each age group.

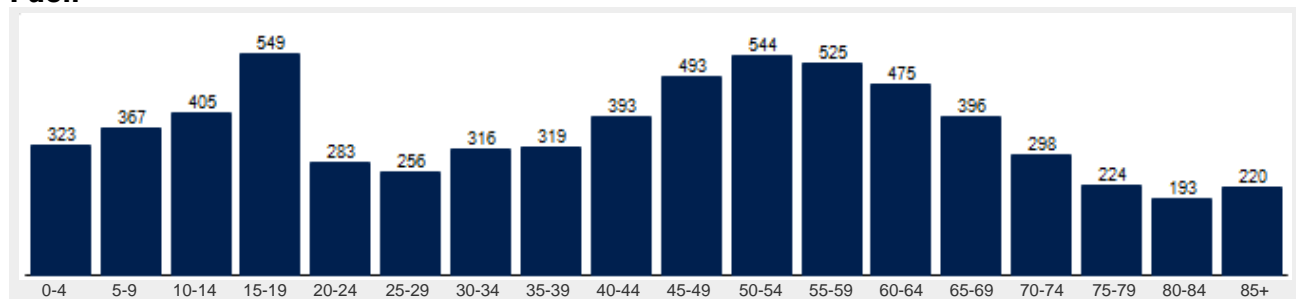
Population	Paoli	National
Male	47.2 %	49.2 %
Female	52.8 %	50.8 %
Total Population	6,579	317,504,602
Median Age	46	38

Housing	Paoli	National
Vacant Dwellings	169	13,735,766
Owner Occupied	1,979	78,220,269
Renter Occupied	659	41,845,751

Community Summary	Paoli	National
Population Growth (since 2000)	2.7 %	12.8 %
Population Density (ppl / mile)	1,957	90
Household Size (ppl)	2.41	2.58
Households w/ Children	27 %	30 %
Annual Residential Turnover	8 %	15 %

Fair Market Rents	Paoli	Chester County
Studio	\$741	\$814
One Bedroom	\$873	\$959
Two Bedroom	\$1,052	\$1,156
Three Bedroom	\$1,310	\$1,440
Four Bedroom	\$1,407	\$1,546

Paoli





Community Overview

Part 3

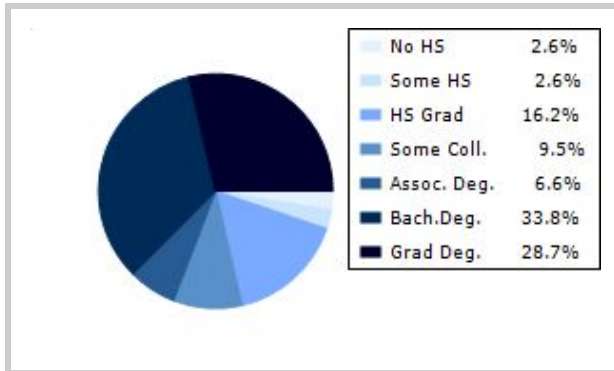
This report shows information collected from US Census and other data collection agencies and is broken down into three general categories: Racial Profile, Marital Status and Education. Each of these categories has been broken down into subcategories making it easy to do a side by side comparison of the two communities.

Education information for both communities has been broken out into two bar graphs. The information at the base of each bar on the bar graph denotes the level of education that colored bar represents. The information to the left of the community bar graph indicates the number of people in that community that have achieved that level of education.

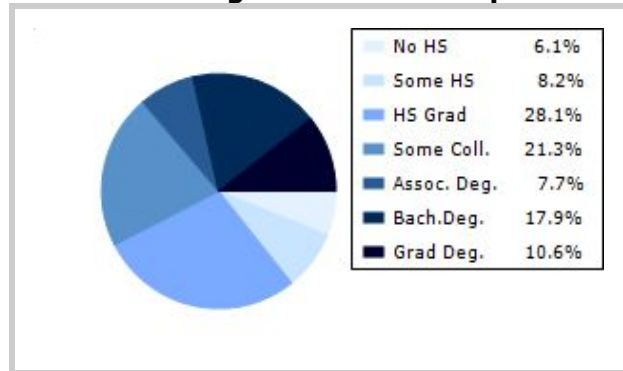
Racial Profile	Paoli	National
White	5,627	229,894,228
African American	348	39,728,359
American Indian, Eskimo, Aleut	5	3,151,782
Asian or Pacific Islander	473	15,288,513
Hawaiian	0	641,051
Other	40	18,461,772

Marital Status	Paoli	National
Never Married	24.2 %	31.8 %
Now Married	56.9 %	49.2 %
Separated	1.2 %	2.2 %
Widowed	9.7 %	6.0 %
Divorced	7.9 %	10.7 %
No Family	3.9 %	4.9 %
With Family	48.1 %	47.5 %
With Children	19.6 %	21.4 %
No Children	28.4 %	26.2 %

Paoli



National Average Educational Report





Financial Report

Part 4

This report shows information collected from US Census and other data collection agencies and is broken down into six general categories; Median Income, Income, Household Expenses and Median Asset Values. Each of these categories has been broken down into subcategories making it easy to do a side by side comparison of the two communities.

Median Household Income*	Paoli	National
Age < 25	\$47,500	\$27,240
Age 25 - 44	\$121,303	\$59,626
Age 45 - 64	\$115,965	\$65,864
Age 65+	\$50,252	\$37,196

* by primary householder age.

Income	Paoli	National (in MM)
< 10K	62	8
10K-15K	130	6
15K-20K	57	6
20K-25K	60	6
25K-30K	112	6
30K-35K	76	6
35K-40K	67	6
40K-45K	89	6
45K-50K	102	5
50K-60K	183	10
60K-75K	171	12
75K-100K	303	15
100K-125K	296	10
125K-150K	203	6
> 150K	728	12

Relative Cost Index	Paoli	National
Contributions	116	100
Personal Insurance	124	100
Apparel	105	100
Education	117	100
Entertainment	111	100
Food And Beverages	101	100
Health Care	103	100
Furnishings	111	100
Shelter	109	100
Household Operations	115	100
Misc Expenses	113	100
Personal Care	108	100
Reading	112	100
Tobacco	89	100
Transportation	105	100
Utilities	104	100
Gifts	117	100
Total Expenses	106	100



Employment Information

Part 5

This report provides a side by side comparison of the Industries, Occupations and Work Force types for the selected communities. Each of these categories has been broken down into subcategories making it easy to do a side by side comparison of the two communities.

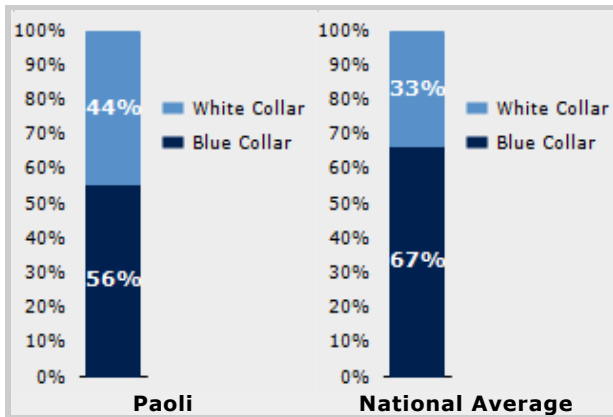
The Industry table to the left shows a breakdown of sixteen different industries and the number of people in each community that are involved in that industry.

The Work Force bar graph below shows the Blue Collar and White Collar percentages for each community, as well as the National Average.

The Occupation table below shows a breakdown of fourteen different occupation classifications and the number of people in each community whose occupation fits that classification.

Industry	Paoli	National
Agriculture	10	699,703
Mining	79	347,874
Construction	121	6,828,820
Manufacturing	414	11,664,002
Transportation and Communications	138	3,718,051
Wholesale Trade	47	1,817,818
Retail Trade	712	21,647,477
Finance, Insurance & Real Estate	1,022	5,785,438
Services	406	8,831,807
Food Services	285	10,239,067
Public Administration	40	8,640,483

Occupation	Paoli	National
Executive	479	7,810,420
Sales	680	17,227,913
Clerical	2,171	25,919,219
Protective Service	29	2,041,240
Arts	97	2,454,555
Social Services	215	4,338,751
Education	140	4,915,376
Health Care	508	4,273,471
Legal	148	1,738,122
Government	0	1,522,109
Computer Science	174	2,290,801
Finance	433	4,944,436



Transportation to Work	Paoli	National
Public	170	6,079,053
Drive	2,516	97,304,402
Carpool	222	15,662,618
Walk	85	3,769,819
Bike	0	489,598
Work at Home	210	3,927,567
Average Time to Work	20.0	25.0



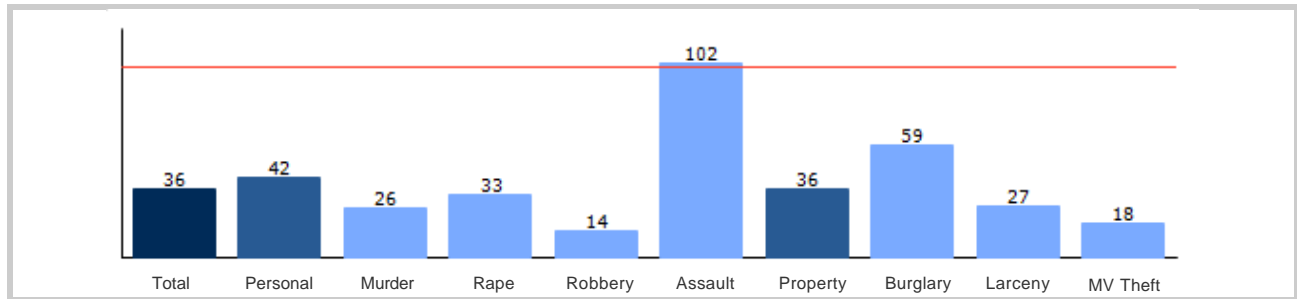
Community Crime Information

Part 6

This report shows information collected from US Census data and other data collection agencies and is broken down by community and by type of crime, and includes a Total Crime total as well. The information at the base of each bar on the bar graph denotes the type of crime that colored bar represents. The information at the top of the community bar graph indicates how that total compares to the national average for that type of offense.

The national average is represented as "100" and is indicated by the red line running across the bar graph. The numbers at the top of each bar represent how much over or under the national average the community rates for this offense.

Paoli Crime





Weather and Environmental Details

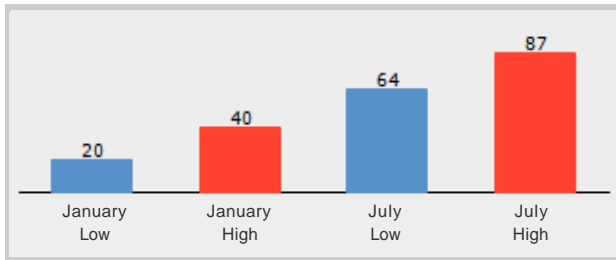
Part 7

Weather Report includes information collected from US Census data and other data collection agencies and shows the weather information for the communities you have selected. Included are temperature highs and lows averaged for the months of January and July for each community.

Environmental Details includes information collected from US Census data and other data collection agencies and shows the environmental details for the communities you have selected. The information at the base of each bar on the bar graph denotes the type of weather risk that colored bar represents. The information at the top of the community bar graph indicates how that total compares to the national average for that type of weather risk.

The national average is represented as "100" and is indicated by a red line running across the bar graph. The numbers at the top of each bar represent how much over or under the national average the community rates for this weather risk.

Paoli Weather



Paoli Environmental Risk

