



# Introduction

Part 1

This Relocation Report is designed to provide information about the economic and social structures of the selected communities. This report will compare the social and economic conditions of two communities, each containing 1 or more zip codes. Information used in this report has been broken down to the zip code level. If more than one zip code has been selected for a community, the information displayed will be an average of all the information from the zip codes that make up that "community."

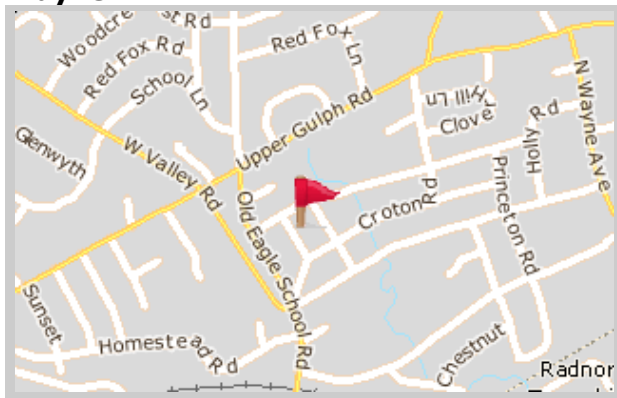
The information found in this report has been compiled and collected from the US Census and other data collection agencies.

The maps below show the center of the communities that are represented in this report.

<b>Wayne</b>
19087 - Pennsylvania

<b>National Average</b>
USA

## Wayne





# Population and Housing

Part 2

This report shows information collected from US Census data and other data collection agencies and is broken down into five general categories: Population, Community Summary, Housing, Housing Stability and the Population Age Demographics Chart.

The Population Age Demographics chart is broken down by community and age group with each bar on the bar graph denoting an age group and the information on top of the bar indicating the number of people in that community for each age group.

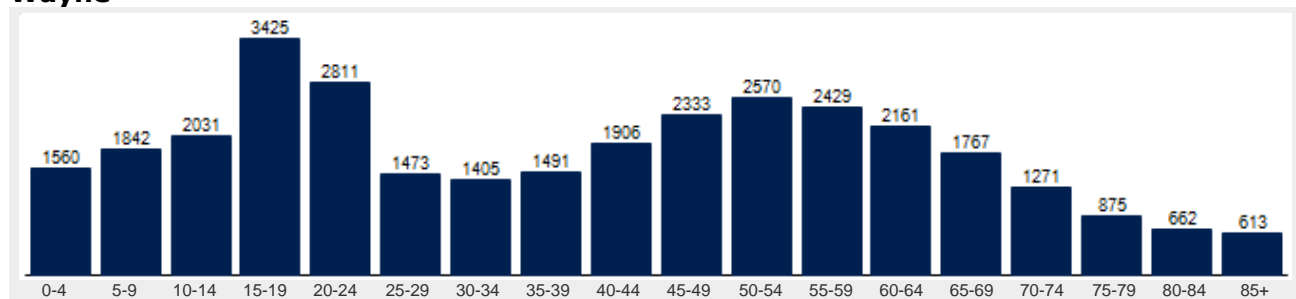
Population	Wayne	National
Male	47.5 %	49.2 %
Female	52.5 %	50.8 %
Total Population	32,623	317,504,602
Median Age	41	38

Housing	Wayne	National
Vacant Dwellings	669	13,735,766
Owner Occupied	9,541	78,220,269
Renter Occupied	2,802	41,845,751

Community Summary	Wayne	National
Population Growth (since 2000)	2.2 %	12.8 %
Population Density (ppl / mile)	2,043	90
Household Size (ppl)	2.41	2.58
Households w/ Children	30 %	30 %
Annual Residential Turnover	10 %	15 %

Fair Market Rents	Wayne	Chester County
Studio	\$790	\$814
One Bedroom	\$930	\$959
Two Bedroom	\$1,121	\$1,156
Three Bedroom	\$1,397	\$1,440
Four Bedroom	\$1,500	\$1,546

## Wayne





# Community Overview

Part 3

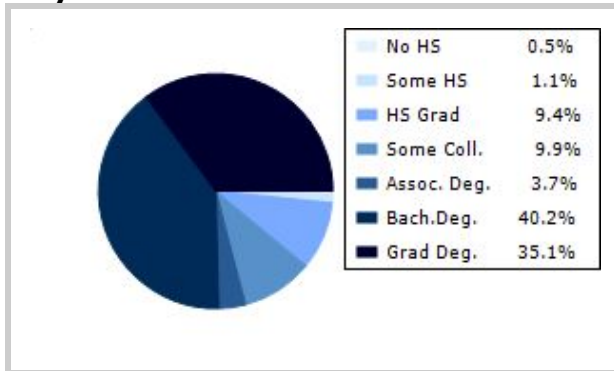
This report shows information collected from US Census and other data collection agencies and is broken down into three general categories: Racial Profile, Marital Status and Education. Each of these categories has been broken down into subcategories making it easy to do a side by side comparison of the two communities.

Education information for both communities has been broken out into two bar graphs. The information at the base of each bar on the bar graph denotes the level of education that colored bar represents. The information to the left of the community bar graph indicates the number of people in that community that have achieved that level of education.

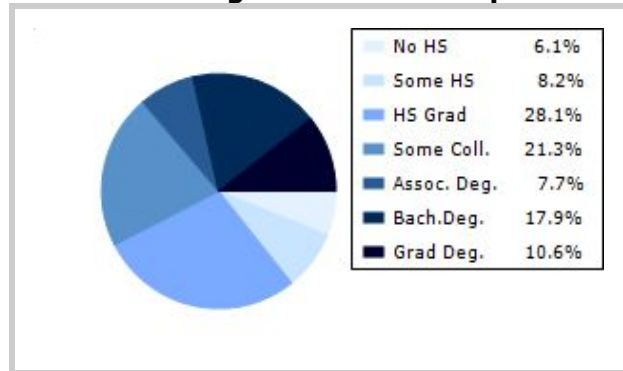
Racial Profile	Wayne	National
White	28,391	229,894,228
African American	1,182	39,728,359
American Indian, Eskimo, Aleut	6	3,151,782
Asian or Pacific Islander	2,387	15,288,513
Hawaiian	0	641,051
Other	85	18,461,772

Marital Status	Wayne	National
Never Married	32.7 %	31.8 %
Now Married	52.8 %	49.2 %
Separated	1.4 %	2.2 %
Widowed	5.7 %	6.0 %
Divorced	7.3 %	10.7 %
No Family	4.3 %	4.9 %
With Family	47.8 %	47.5 %
With Children	22.6 %	21.4 %
No Children	25.3 %	26.2 %

## Wayne



## National Average Educational Report





# Financial Report

Part 4

This report shows information collected from US Census and other data collection agencies and is broken down into six general categories; Median Income, Income, Household Expenses and Median Asset Values. Each of these categories has been broken down into subcategories making it easy to do a side by side comparison of the two communities.

Median Household Income*	Wayne	National
Age < 25	\$37,071	\$27,240
Age 25 - 44	\$121,039	\$59,626
Age 45 - 64	\$136,417	\$65,864
Age 65+	\$59,307	\$37,196

\* by primary householder age.

Income	Wayne	National (in MM)
< 10K	367	8
10K-15K	256	6
15K-20K	124	6
20K-25K	381	6
25K-30K	247	6
30K-35K	437	6
35K-40K	224	6
40K-45K	380	6
45K-50K	245	5
50K-60K	690	10
60K-75K	987	12
75K-100K	1381	15
100K-125K	1299	10
125K-150K	984	6
> 150K	4342	12

Relative Cost Index	Wayne	National
Contributions	137	100
Personal Insurance	147	100
Apparel	124	100
Education	147	100
Entertainment	131	100
Food And Beverages	116	100
Health Care	113	100
Furnishings	131	100
Shelter	126	100
Household Operations	137	100
Misc Expenses	129	100
Personal Care	124	100
Reading	129	100
Tobacco	96	100
Transportation	121	100
Utilities	119	100
Gifts	136	100
<b>Total Expenses</b>	<b>123</b>	<b>100</b>



# Employment Information

This report provides a side by side comparison of the Industries, Occupations and Work Force types for the selected communities. Each of these categories has been broken down into subcategories making it easy to do a side by side comparison of the two communities.

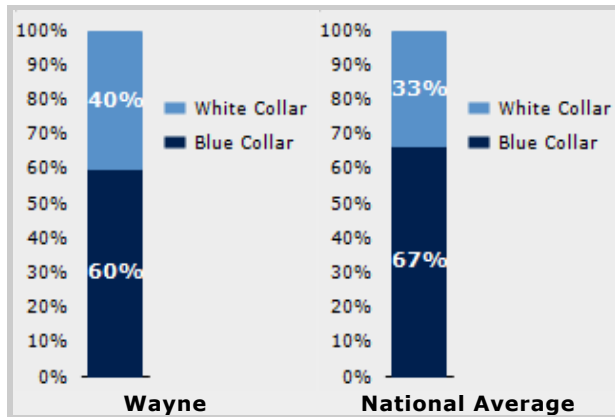
The Industry table to the left shows a breakdown of sixteen different industries and the number of people in each community that are involved in that industry.

The Work Force bar graph below shows the Blue Collar and White Collar percentages for each community, as well as the National Average.

The Occupation table below shows a breakdown of fourteen different occupation classifications and the number of people in each community whose occupation fits that classification.

Industry	Wayne	National
Agriculture	133	699,703
Mining	4	347,874
Construction	1,020	6,828,820
Manufacturing	3,112	11,664,002
Transportation and Communications	126	3,718,051
Wholesale Trade	172	1,817,818
Retail Trade	3,129	21,647,477
Finance, Insurance & Real Estate	7,875	5,785,438
Services	1,741	8,831,807
Food Services	2,506	10,239,067
Public Administration	226	8,640,483

Occupation	Wayne	National
Executive	3,674	7,810,420
Sales	5,633	17,227,913
Clerical	11,456	25,919,219
Protective Service	379	2,041,240
Arts	865	2,454,555
Social Services	2,408	4,338,751
Education	1,182	4,915,376
Health Care	1,741	4,273,471
Legal	422	1,738,122
Government	0	1,522,109
Computer Science	1,596	2,290,801
Finance	3,170	4,944,436



Transportation to Work	Wayne	National
Public	1,396	6,079,053
Drive	11,858	97,304,402
Carpool	794	15,662,618
Walk	609	3,769,819
Bike	18	489,598
Work at Home	1,009	3,927,567
Average Time to Work	25.0	25.0



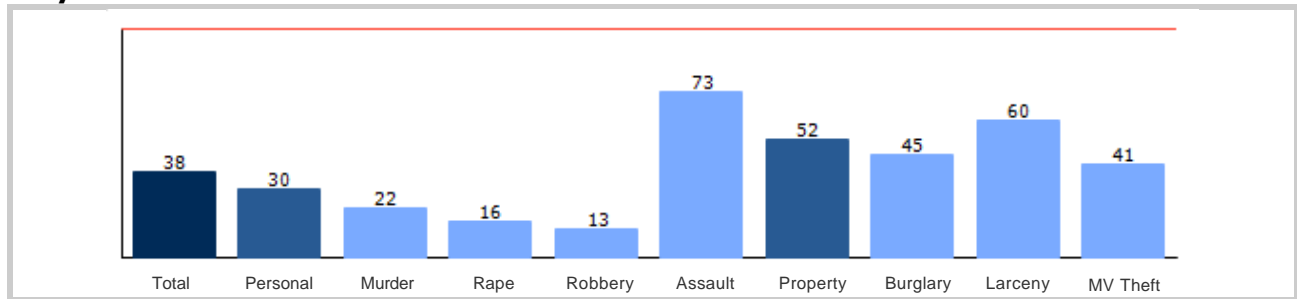
# Community Crime Information

Part 6

This report shows information collected from US Census data and other data collection agencies and is broken down by community and by type of crime, and includes a Total Crime total as well. The information at the base of each bar on the bar graph denotes the type of crime that colored bar represents. The information at the top of the community bar graph indicates how that total compares to the national average for that type of offense.

The national average is represented as "100" and is indicated by the red line running across the bar graph. The numbers at the top of each bar represent how much over or under the national average the community rates for this offense.

## Wayne Crime





# Weather and Environmental Details

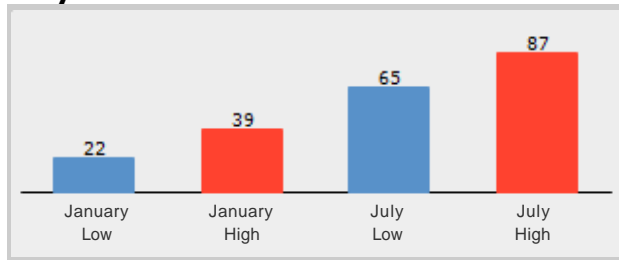
Part 7

**Weather Report** includes information collected from US Census data and other data collection agencies and shows the weather information for the communities you have selected. Included are temperature highs and lows averaged for the months of January and July for each community.

**Environmental Details** includes information collected from US Census data and other data collection agencies and shows the environmental details for the communities you have selected. The information at the base of each bar on the bar graph denotes the type of weather risk that colored bar represents. The information at the top of the community bar graph indicates how that total compares to the national average for that type of weather risk.

The national average is represented as "100" and is indicated by a red line running across the bar graph. The numbers at the top of each bar represent how much over or under the national average the community rates for this weather risk.

## Wayne Weather



## Wayne Environmental Risk

