



Introduction

Part 1

This Relocation Report is designed to provide information about the economic and social structures of the selected communities. This report will compare the social and economic conditions of two communities, each containing 1 or more zip codes. Information used in this report has been broken down to the zip code level. If more than one zip code has been selected for a community, the information displayed will be an average of all the information from the zip codes that make up that "community."

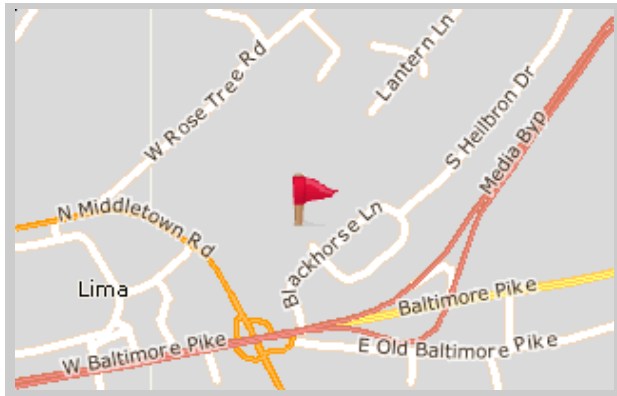
The information found in this report has been compiled and collected from the US Census and other data collection agencies.

The maps below show the center of the communities that are represented in this report.

Media
19063 - Pennsylvania

National Average
USA

Media





Population and Housing

Part 2

This report shows information collected from US Census data and other data collection agencies and is broken down into five general categories: Population, Community Summary, Housing, Housing Stability and the Population Age Demographics Chart.

The Population Age Demographics chart is broken down by community and age group with each bar on the bar graph denoting an age group and the information on top of the bar indicating the number of people in that community for each age group.

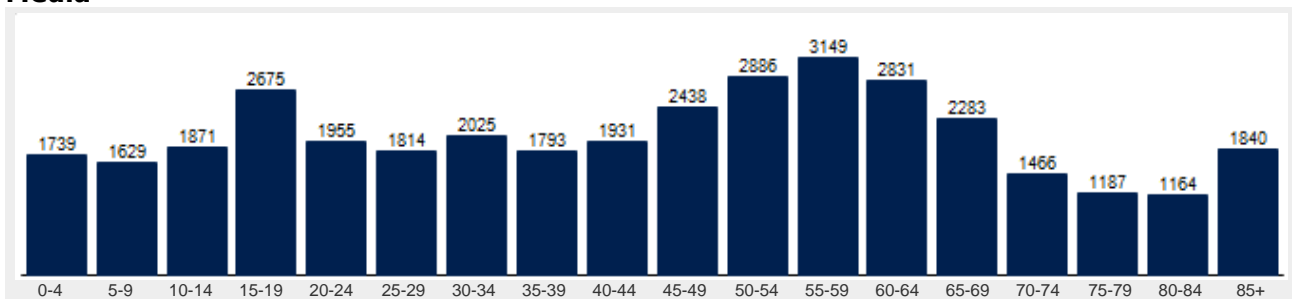
Population	Media	National
Male	47.8 %	49.2 %
Female	52.2 %	50.8 %
Total Population	36,678	317,504,602
Median Age	47	38

Housing	Media	National
Vacant Dwellings	776	13,735,766
Owner Occupied	10,366	78,220,269
Renter Occupied	4,490	41,845,751

Community Summary	Media	National
Population Growth (since 2000)	-1.1 %	12.8 %
Population Density (ppl / mile)	1,589	90
Household Size (ppl)	2.33	2.58
Households w/ Children	25 %	30 %
Annual Residential Turnover	9 %	15 %

Fair Market Rents	Media	Delaware County
Studio	\$684	\$814
One Bedroom	\$806	\$959
Two Bedroom	\$971	\$1,156
Three Bedroom	\$1,210	\$1,440
Four Bedroom	\$1,299	\$1,546

Media





Community Overview

Part 3

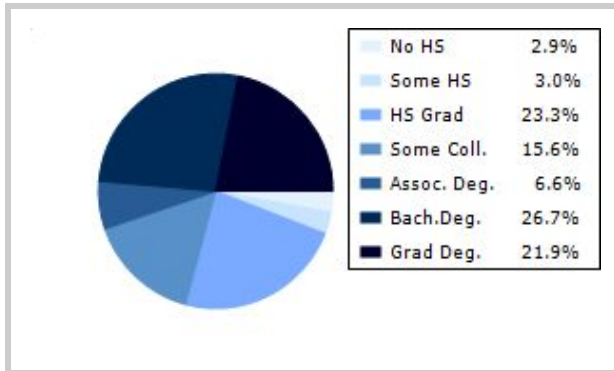
This report shows information collected from US Census and other data collection agencies and is broken down into three general categories: Racial Profile, Marital Status and Education. Each of these categories has been broken down into subcategories making it easy to do a side by side comparison of the two communities.

Education information for both communities has been broken out into two bar graphs. The information at the base of each bar on the bar graph denotes the level of education that colored bar represents. The information to the left of the community bar graph indicates the number of people in that community that have achieved that level of education.

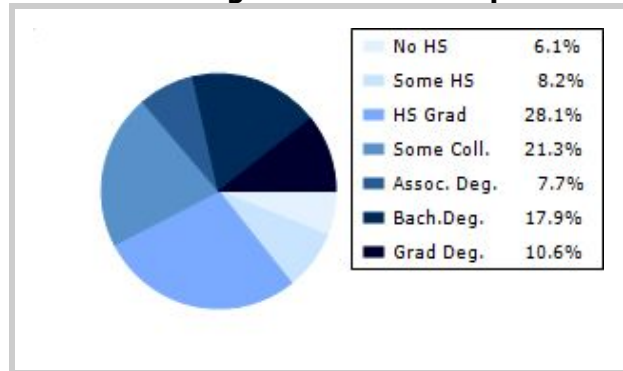
Racial Profile	Media	National
White	32,677	229,894,228
African American	2,018	39,728,359
American Indian, Eskimo, Aleut	19	3,151,782
Asian or Pacific Islander	1,299	15,288,513
Hawaiian	4	641,051
Other	192	18,461,772

Marital Status	Media	National
Never Married	28.2 %	31.8 %
Now Married	52.4 %	49.2 %
Separated	1.7 %	2.2 %
Widowed	10.0 %	6.0 %
Divorced	7.6 %	10.7 %
No Family	4.8 %	4.9 %
With Family	47.6 %	47.5 %
With Children	19.3 %	21.4 %
No Children	28.2 %	26.2 %

Media



National Average Educational Report





Financial Report

Part 4

This report shows information collected from US Census and other data collection agencies and is broken down into six general categories; Median Income, Income, Household Expenses and Median Asset Values. Each of these categories has been broken down into subcategories making it easy to do a side by side comparison of the two communities.

Median Household Income*	Media	National
Age < 25	\$44,103	\$27,240
Age 25 - 44	\$97,354	\$59,626
Age 45 - 64	\$108,248	\$65,864
Age 65+	\$49,898	\$37,196

* by primary householder age.

Income	Media	National (in MM)
< 10K	469	8
10K-15K	281	6
15K-20K	493	6
20K-25K	399	6
25K-30K	525	6
30K-35K	497	6
35K-40K	531	6
40K-45K	608	6
45K-50K	499	5
50K-60K	937	10
60K-75K	1320	12
75K-100K	1974	15
100K-125K	1575	10
125K-150K	1377	6
> 150K	3372	12

Relative Cost Index	Media	National
Contributions	121	100
Personal Insurance	127	100
Apparel	110	100
Education	118	100
Entertainment	118	100
Food And Beverages	107	100
Health Care	106	100
Furnishings	116	100
Shelter	116	100
Household Operations	118	100
Misc Expenses	116	100
Personal Care	113	100
Reading	118	100
Tobacco	94	100
Transportation	111	100
Utilities	114	100
Gifts	124	100
Total Expenses	112	100



Employment Information

This report provides a side by side comparison of the Industries, Occupations and Work Force types for the selected communities. Each of these categories has been broken down into subcategories making it easy to do a side by side comparison of the two communities.

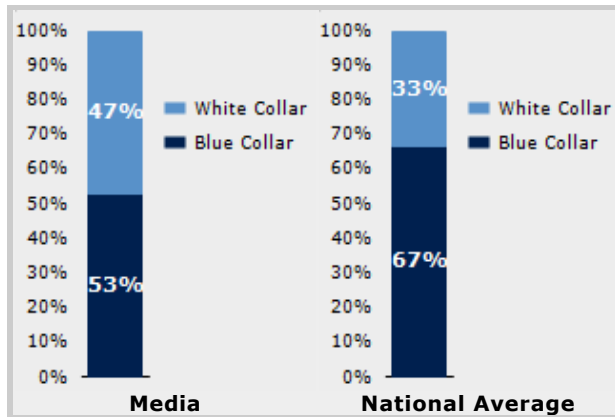
The Industry table to the left shows a breakdown of sixteen different industries and the number of people in each community that are involved in that industry.

The Work Force bar graph below shows the Blue Collar and White Collar percentages for each community, as well as the National Average.

The Occupation table below shows a breakdown of fourteen different occupation classifications and the number of people in each community whose occupation fits that classification.

Industry	Media	National
Agriculture	0	699,703
Mining	14	347,874
Construction	622	6,828,820
Manufacturing	171	11,664,002
Transportation and Communications	45	3,718,051
Wholesale Trade	64	1,817,818
Retail Trade	2,643	21,647,477
Finance, Insurance & Real Estate	621	5,785,438
Services	1,481	8,831,807
Food Services	949	10,239,067
Public Administration	993	8,640,483

Occupation	Media	National
Executive	1,290	7,810,420
Sales	1,960	17,227,913
Clerical	4,919	25,919,219
Protective Service	445	2,041,240
Arts	365	2,454,555
Social Services	1,365	4,338,751
Education	551	4,915,376
Health Care	1,589	4,273,471
Legal	739	1,738,122
Government	0	1,522,109
Computer Science	327	2,290,801
Finance	704	4,944,436



Transportation to Work	Media	National
Public	857	6,079,053
Drive	13,707	97,304,402
Carpool	1,474	15,662,618
Walk	500	3,769,819
Bike	15	489,598
Work at Home	618	3,927,567
Average Time to Work	26.0	25.0



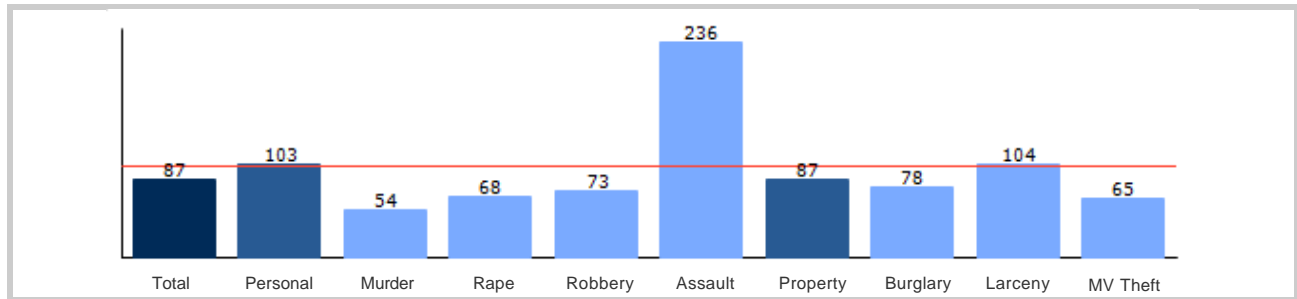
Community Crime Information

Part 6

This report shows information collected from US Census data and other data collection agencies and is broken down by community and by type of crime, and includes a Total Crime total as well. The information at the base of each bar on the bar graph denotes the type of crime that colored bar represents. The information at the top of the community bar graph indicates how that total compares to the national average for that type of offense.

The national average is represented as "100" and is indicated by the red line running across the bar graph. The numbers at the top of each bar represent how much over or under the national average the community rates for this offense.

Media Crime





Weather and Environmental Details

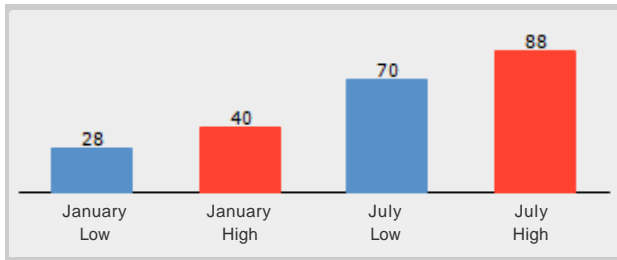
Part 7

Weather Report includes information collected from US Census data and other data collection agencies and shows the weather information for the communities you have selected. Included are temperature highs and lows averaged for the months of January and July for each community.

Environmental Details includes information collected from US Census data and other data collection agencies and shows the environmental details for the communities you have selected. The information at the base of each bar on the bar graph denotes the type of weather risk that colored bar represents. The information at the top of the community bar graph indicates how that total compares to the national average for that type of weather risk.

The national average is represented as "100" and is indicated by a red line running across the bar graph. The numbers at the top of each bar represent how much over or under the national average the community rates for this weather risk.

Media Weather



Media Environmental Risk

