



Introduction

Part 1

This Relocation Report is designed to provide information about the economic and social structures of the selected communities. This report will compare the social and economic conditions of two communities, each containing 1 or more zip codes. Information used in this report has been broken down to the zip code level. If more than one zip code has been selected for a community, the information displayed will be an average of all the information from the zip codes that make up that "community."

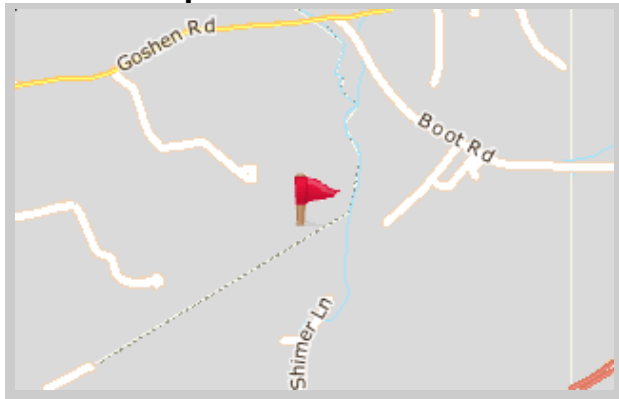
The information found in this report has been compiled and collected from the US Census and other data collection agencies.

The maps below show the center of the communities that are represented in this report.

Newtown Square
19073 - Pennsylvania

National Average
USA

Newtown Square





Population and Housing

Part 2

This report shows information collected from US Census data and other data collection agencies and is broken down into five general categories: Population, Community Summary, Housing, Housing Stability and the Population Age Demographics Chart.

The Population Age Demographics chart is broken down by community and age group with each bar on the bar graph denoting an age group and the information on top of the bar indicating the number of people in that community for each age group.

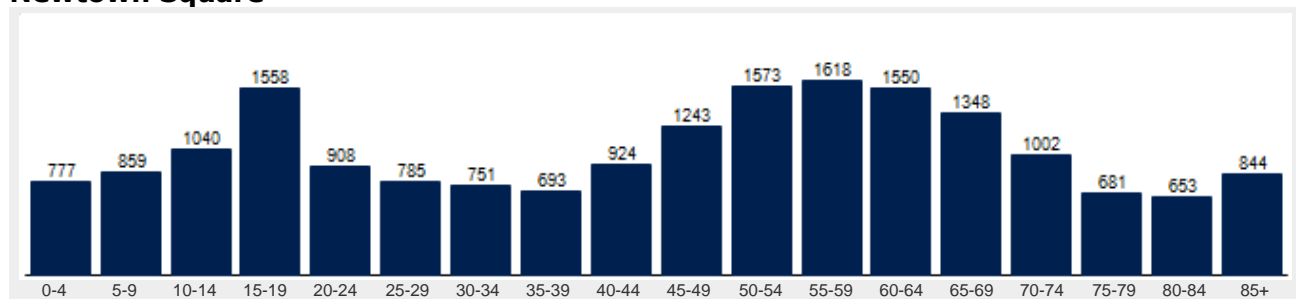
Population	Newtown Square	National
Male	47.4 %	49.2 %
Female	52.6 %	50.8 %
Total Population	18,808	317,504,602
Median Age	49	38

Housing	Newtown Square	National
Vacant Dwellings	518	13,735,766
Owner Occupied	6,127	78,220,269
Renter Occupied	1,527	41,845,751

Community Summary	Newtown Square	National
Population Growth (since 2000)	9.0 %	12.8 %
Population Density (ppl / mile)	909	90
Household Size (ppl)	2.43	2.58
Households w/ Children	26 %	30 %
Annual Residential Turnover	9 %	15 %

Fair Market Rents	Newtown Square	Delaware County
Studio	\$961	\$814
One Bedroom	\$1,132	\$959
Two Bedroom	\$1,364	\$1,156
Three Bedroom	\$1,699	\$1,440
Four Bedroom	\$1,824	\$1,546

Newtown Square





Community Overview

Part 3

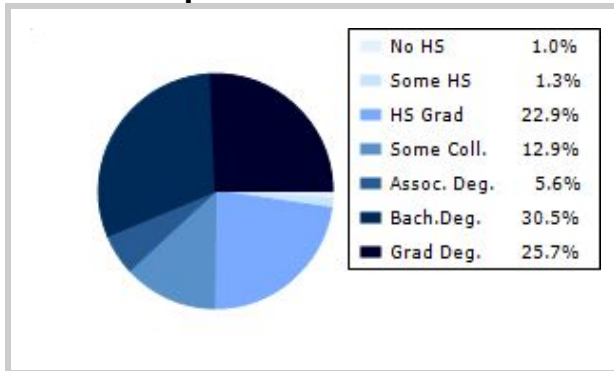
This report shows information collected from US Census and other data collection agencies and is broken down into three general categories: Racial Profile, Marital Status and Education. Each of these categories has been broken down into subcategories making it easy to do a side by side comparison of the two communities.

Education information for both communities has been broken out into two bar graphs. The information at the base of each bar on the bar graph denotes the level of education that colored bar represents. The information to the left of the community bar graph indicates the number of people in that community that have achieved that level of education.

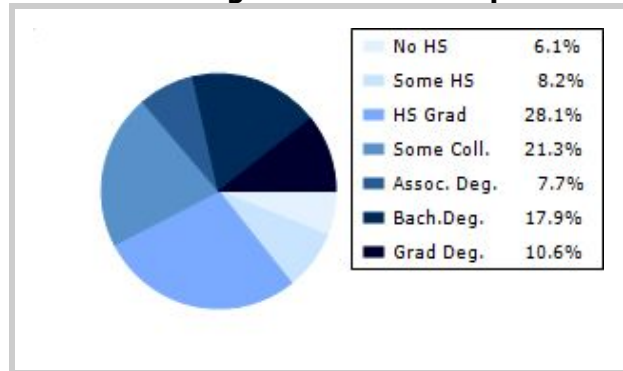
Racial Profile	Newtown Square	National
White	17,569	229,894,228
African American	195	39,728,359
American Indian, Eskimo, Aleut	7	3,151,782
Asian or Pacific Islander	811	15,288,513
Hawaiian	1	641,051
Other	66	18,461,772

Marital Status	Newtown Square	National
Never Married	23.5 %	31.8 %
Now Married	60.5 %	49.2 %
Separated	1.1 %	2.2 %
Widowed	8.7 %	6.0 %
Divorced	6.2 %	10.7 %
No Family	2.4 %	4.9 %
With Family	48.8 %	47.5 %
With Children	19.1 %	21.4 %
No Children	29.7 %	26.2 %

Newtown Square



National Average Educational Report





Financial Report

Part 4

This report shows information collected from US Census and other data collection agencies and is broken down into six general categories; Median Income, Income, Household Expenses and Median Asset Values. Each of these categories has been broken down into subcategories making it easy to do a side by side comparison of the two communities.

Median Household Income*	Newtown Square	National
Age < 25	\$49,212	\$27,240
Age 25 - 44	\$130,348	\$59,626
Age 45 - 64	\$129,388	\$65,864
Age 65+	\$58,172	\$37,196

* by primary householder age.

Income	Newtown Square	National (in MM)
< 10K	175	8
10K-15K	86	6
15K-20K	151	6
20K-25K	239	6
25K-30K	250	6
30K-35K	281	6
35K-40K	267	6
40K-45K	206	6
45K-50K	179	5
50K-60K	336	10
60K-75K	588	12
75K-100K	929	15
100K-125K	884	10
125K-150K	724	6
> 150K	2360	12

Relative Cost Index	Newtown Square	National
Contributions	128	100
Personal Insurance	138	100
Apparel	112	100
Education	126	100
Entertainment	121	100
Food And Beverages	108	100
Health Care	109	100
Furnishings	120	100
Shelter	118	100
Household Operations	124	100
Misc Expenses	121	100
Personal Care	116	100
Reading	123	100
Tobacco	90	100
Transportation	112	100
Utilities	113	100
Gifts	131	100
Total Expenses	114	100



Employment Information

This report provides a side by side comparison of the Industries, Occupations and Work Force types for the selected communities. Each of these categories has been broken down into subcategories making it easy to do a side by side comparison of the two communities.

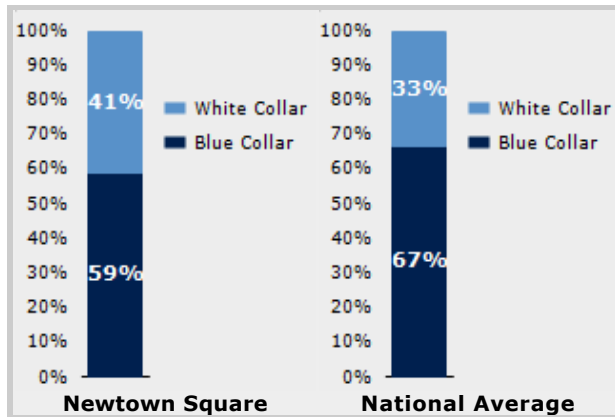
The Industry table to the left shows a breakdown of sixteen different industries and the number of people in each community that are involved in that industry.

The Work Force bar graph below shows the Blue Collar and White Collar percentages for each community, as well as the National Average.

The Occupation table below shows a breakdown of fourteen different occupation classifications and the number of people in each community whose occupation fits that classification.

Industry	Newtown Square	National
Agriculture	33	699,703
Mining	31	347,874
Construction	1,038	6,828,820
Manufacturing	758	11,664,002
Transportation and Communications	43	3,718,051
Wholesale Trade	122	1,817,818
Retail Trade	1,310	21,647,477
Finance, Insurance & Real Estate	641	5,785,438
Services	1,054	8,831,807
Food Services	1,016	10,239,067
Public Administration	224	8,640,483

Occupation	Newtown Square	National
Executive	1,156	7,810,420
Sales	1,738	17,227,913
Clerical	4,217	25,919,219
Protective Service	111	2,041,240
Arts	312	2,454,555
Social Services	1,216	4,338,751
Education	415	4,915,376
Health Care	1,229	4,273,471
Legal	131	1,738,122
Government	0	1,522,109
Computer Science	342	2,290,801
Finance	643	4,944,436



Transportation to Work	Newtown Square	National
Public	248	6,079,053
Drive	6,429	97,304,402
Carpool	554	15,662,618
Walk	124	3,769,819
Bike	5	489,598
Work at Home	310	3,927,567
Average Time to Work	26.0	25.0



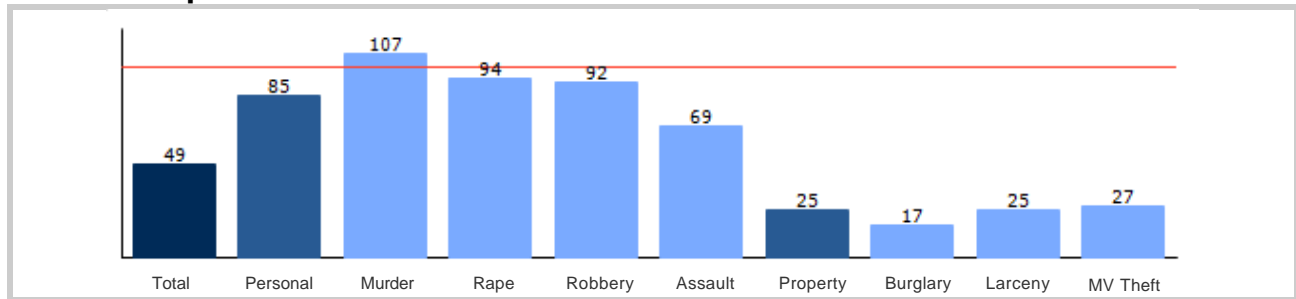
Community Crime Information

Part 6

This report shows information collected from US Census data and other data collection agencies and is broken down by community and by type of crime, and includes a Total Crime total as well. The information at the base of each bar on the bar graph denotes the type of crime that colored bar represents. The information at the top of the community bar graph indicates how that total compares to the national average for that type of offense.

The national average is represented as "100" and is indicated by the red line running across the bar graph. The numbers at the top of each bar represent how much over or under the national average the community rates for this offense.

Newtown Square Crime





Weather and Environmental Details

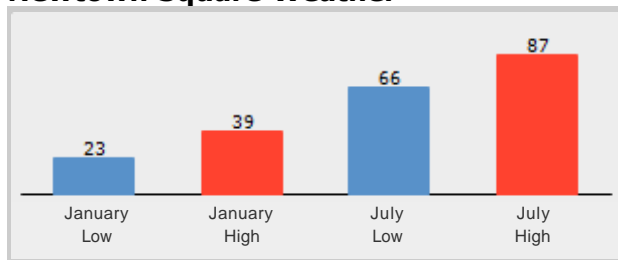
Part 7

Weather Report includes information collected from US Census data and other data collection agencies and shows the weather information for the communities you have selected. Included are temperature highs and lows averaged for the months of January and July for each community.

Environmental Details includes information collected from US Census data and other data collection agencies and shows the environmental details for the communities you have selected. The information at the base of each bar on the bar graph denotes the type of weather risk that colored bar represents. The information at the top of the community bar graph indicates how that total compares to the national average for that type of weather risk.

The national average is represented as "100" and is indicated by a red line running across the bar graph. The numbers at the top of each bar represent how much over or under the national average the community rates for this weather risk.

Newtown Square Weather



Newtown Square Environmental Risk

