



Introduction

Part 1

This Relocation Report is designed to provide information about the economic and social structures of the selected communities. This report will compare the social and economic conditions of two communities, each containing 1 or more zip codes. Information used in this report has been broken down to the zip code level. If more than one zip code has been selected for a community, the information displayed will be an average of all the information from the zip codes that make up that "community."

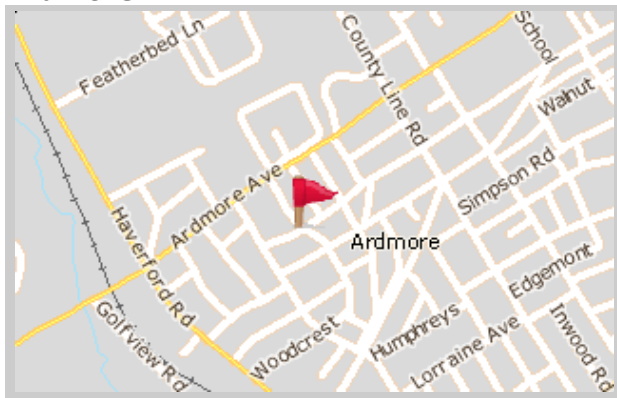
The information found in this report has been compiled and collected from the US Census and other data collection agencies.

The maps below show the center of the communities that are represented in this report.

Ardmore
19003 - Pennsylvania

National Average
USA

Ardmore





Population and Housing

Part 2

This report shows information collected from US Census data and other data collection agencies and is broken down into five general categories: Population, Community Summary, Housing, Housing Stability and the Population Age Demographics Chart.

The Population Age Demographics chart is broken down by community and age group with each bar on the bar graph denoting an age group and the information on top of the bar indicating the number of people in that community for each age group.

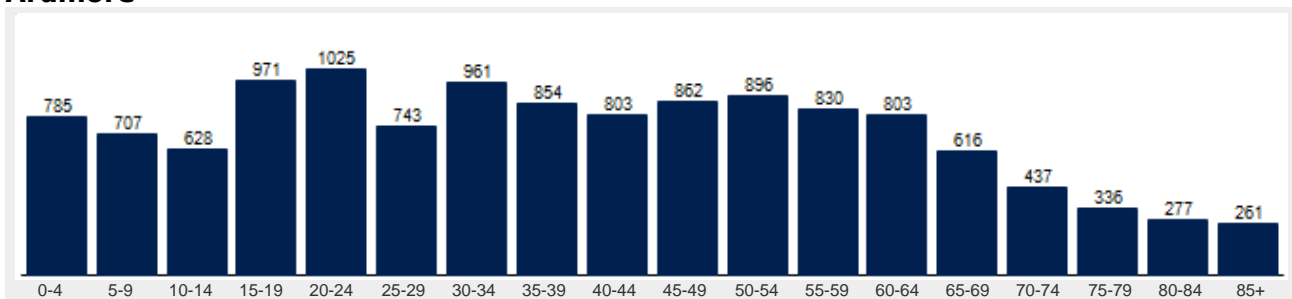
Population	Ardmore	National
Male	46.8 %	49.2 %
Female	53.2 %	50.8 %
Total Population	12,795	317,504,602
Median Age	38	38

Housing	Ardmore	National
Vacant Dwellings	400	13,735,766
Owner Occupied	3,519	78,220,269
Renter Occupied	1,883	41,845,751

Community Summary	Ardmore	National
Population Growth (since 2000)	-2.8 %	12.8 %
Population Density (ppl / mile)	6,589	90
Household Size (ppl)	2.28	2.58
Households w/ Children	25 %	30 %
Annual Residential Turnover	17 %	15 %

Fair Market Rents	Ardmore	Montgomery County
Studio	\$594	\$814
One Bedroom	\$700	\$959
Two Bedroom	\$844	\$1,156
Three Bedroom	\$1,051	\$1,440
Four Bedroom	\$1,129	\$1,546

Ardmore





Community Overview

Part 3

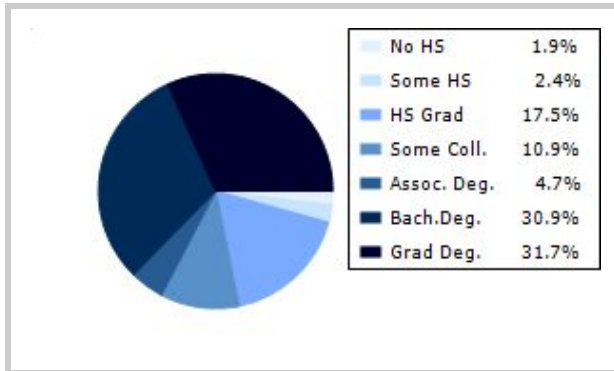
This report shows information collected from US Census and other data collection agencies and is broken down into three general categories: Racial Profile, Marital Status and Education. Each of these categories has been broken down into subcategories making it easy to do a side by side comparison of the two communities.

Education information for both communities has been broken out into two bar graphs. The information at the base of each bar on the bar graph denotes the level of education that colored bar represents. The information to the left of the community bar graph indicates the number of people in that community that have achieved that level of education.

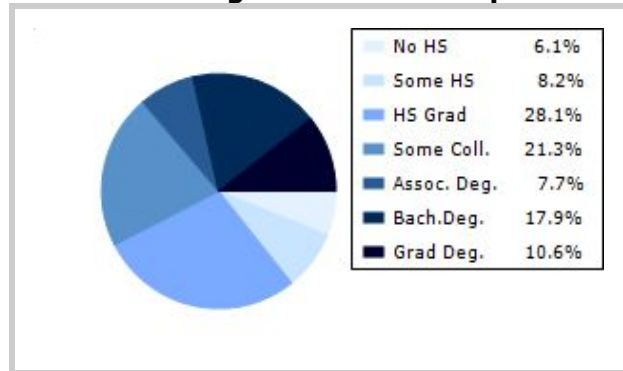
Racial Profile	Ardmore	National
White	10,126	229,894,228
African American	1,584	39,728,359
American Indian, Eskimo, Aleut	73	3,151,782
Asian or Pacific Islander	566	15,288,513
Hawaiian	0	641,051
Other	32	18,461,772

Marital Status	Ardmore	National
Never Married	40.7 %	31.8 %
Now Married	43.7 %	49.2 %
Separated	1.5 %	2.2 %
Widowed	5.7 %	6.0 %
Divorced	8.3 %	10.7 %
No Family	7.8 %	4.9 %
With Family	46.1 %	47.5 %
With Children	20.1 %	21.4 %
No Children	26.0 %	26.2 %

Ardmore



National Average Educational Report





Financial Report

Part 4

This report shows information collected from US Census and other data collection agencies and is broken down into six general categories; Median Income, Income, Household Expenses and Median Asset Values. Each of these categories has been broken down into subcategories making it easy to do a side by side comparison of the two communities.

Median Household Income*	Ardmore	National
Age < 25	\$22,463	\$27,240
Age 25 - 44	\$84,565	\$59,626
Age 45 - 64	\$89,319	\$65,864
Age 65+	\$46,977	\$37,196

* by primary householder age.

Income	Ardmore	National (in MM)
< 10K	230	8
10K-15K	187	6
15K-20K	219	6
20K-25K	259	6
25K-30K	126	6
30K-35K	211	6
35K-40K	160	6
40K-45K	205	6
45K-50K	167	5
50K-60K	472	10
60K-75K	583	12
75K-100K	665	15
100K-125K	557	10
125K-150K	445	6
> 150K	914	12

Relative Cost Index	Ardmore	National
Contributions	107	100
Personal Insurance	110	100
Apparel	104	100
Education	110	100
Entertainment	109	100
Food And Beverages	101	100
Health Care	96	100
Furnishings	106	100
Shelter	107	100
Household Operations	109	100
Misc Expenses	105	100
Personal Care	104	100
Reading	106	100
Tobacco	91	100
Transportation	104	100
Utilities	107	100
Gifts	108	100
Total Expenses	104	100



Employment Information

This report provides a side by side comparison of the Industries, Occupations and Work Force types for the selected communities. Each of these categories has been broken down into subcategories making it easy to do a side by side comparison of the two communities.

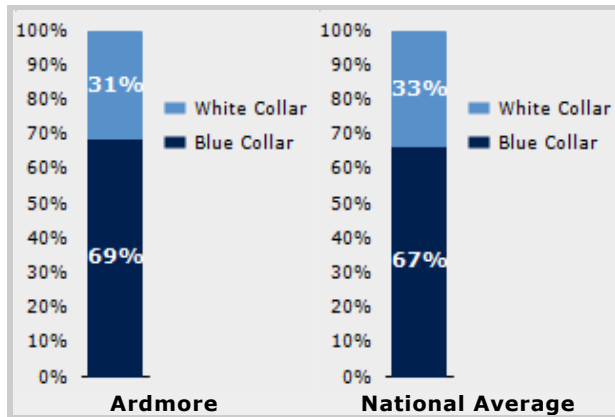
The Industry table to the left shows a breakdown of sixteen different industries and the number of people in each community that are involved in that industry.

The Work Force bar graph below shows the Blue Collar and White Collar percentages for each community, as well as the National Average.

The Occupation table below shows a breakdown of fourteen different occupation classifications and the number of people in each community whose occupation fits that classification.

Industry	Ardmore	National
Agriculture	3	699,703
Mining	0	347,874
Construction	334	6,828,820
Manufacturing	194	11,664,002
Transportation and Communications	91	3,718,051
Wholesale Trade	56	1,817,818
Retail Trade	1,109	21,647,477
Finance, Insurance & Real Estate	175	5,785,438
Services	692	8,831,807
Food Services	369	10,239,067
Public Administration	847	8,640,483

Occupation	Ardmore	National
Executive	341	7,810,420
Sales	940	17,227,913
Clerical	1,064	25,919,219
Protective Service	107	2,041,240
Arts	95	2,454,555
Social Services	200	4,338,751
Education	305	4,915,376
Health Care	161	4,273,471
Legal	47	1,738,122
Government	0	1,522,109
Computer Science	94	2,290,801
Finance	209	4,944,436



Transportation to Work	Ardmore	National
Public	785	6,079,053
Drive	4,809	97,304,402
Carpool	630	15,662,618
Walk	384	3,769,819
Bike	75	489,598
Work at Home	226	3,927,567
Average Time to Work	25.0	25.0



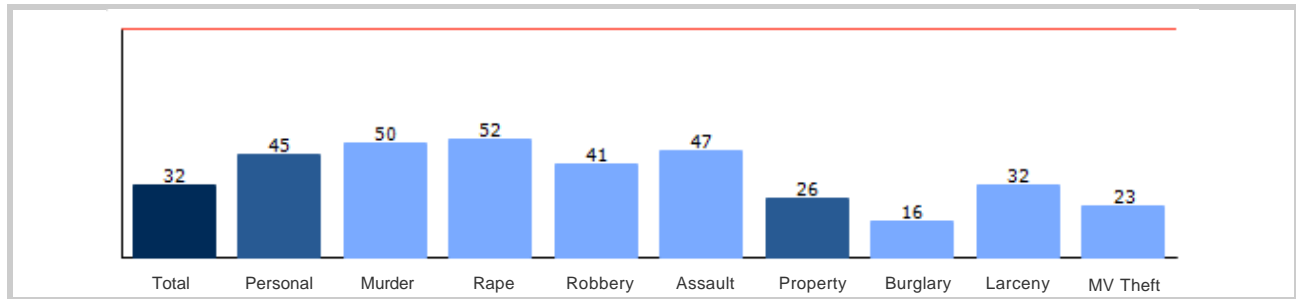
Community Crime Information

Part 6

This report shows information collected from US Census data and other data collection agencies and is broken down by community and by type of crime, and includes a Total Crime total as well. The information at the base of each bar on the bar graph denotes the type of crime that colored bar represents. The information at the top of the community bar graph indicates how that total compares to the national average for that type of offense.

The national average is represented as "100" and is indicated by the red line running across the bar graph. The numbers at the top of each bar represent how much over or under the national average the community rates for this offense.

Ardmore Crime





Weather and Environmental Details

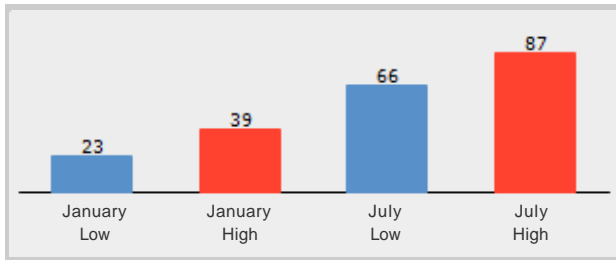
Part 7

Weather Report includes information collected from US Census data and other data collection agencies and shows the weather information for the communities you have selected. Included are temperature highs and lows averaged for the months of January and July for each community.

Environmental Details includes information collected from US Census data and other data collection agencies and shows the environmental details for the communities you have selected. The information at the base of each bar on the bar graph denotes the type of weather risk that colored bar represents. The information at the top of the community bar graph indicates how that total compares to the national average for that type of weather risk.

The national average is represented as "100" and is indicated by a red line running across the bar graph. The numbers at the top of each bar represent how much over or under the national average the community rates for this weather risk.

Ardmore Weather



Ardmore Environmental Risk

