



Introduction

Part 1

This Relocation Report is designed to provide information about the economic and social structures of the selected communities. This report will compare the social and economic conditions of two communities, each containing 1 or more zip codes. Information used in this report has been broken down to the zip code level. If more than one zip code has been selected for a community, the information displayed will be an average of all the information from the zip codes that make up that "community."

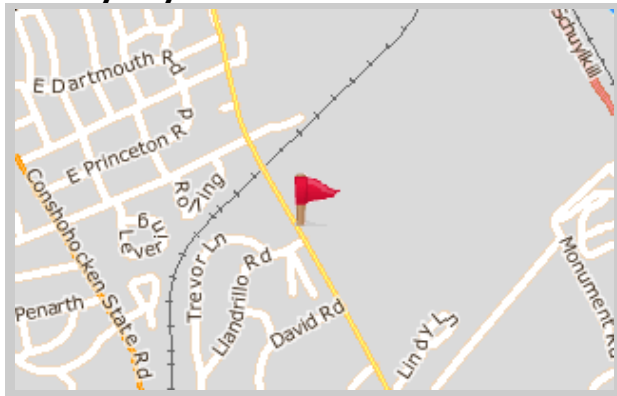
The information found in this report has been compiled and collected from the US Census and other data collection agencies.

The maps below show the center of the communities that are represented in this report.

Bala Cynwyd
19004 - Pennsylvania

National Average
USA

Bala Cynwyd





Population and Housing

Part 2

This report shows information collected from US Census data and other data collection agencies and is broken down into five general categories: Population, Community Summary, Housing, Housing Stability and the Population Age Demographics Chart.

The Population Age Demographics chart is broken down by community and age group with each bar on the bar graph denoting an age group and the information on top of the bar indicating the number of people in that community for each age group.

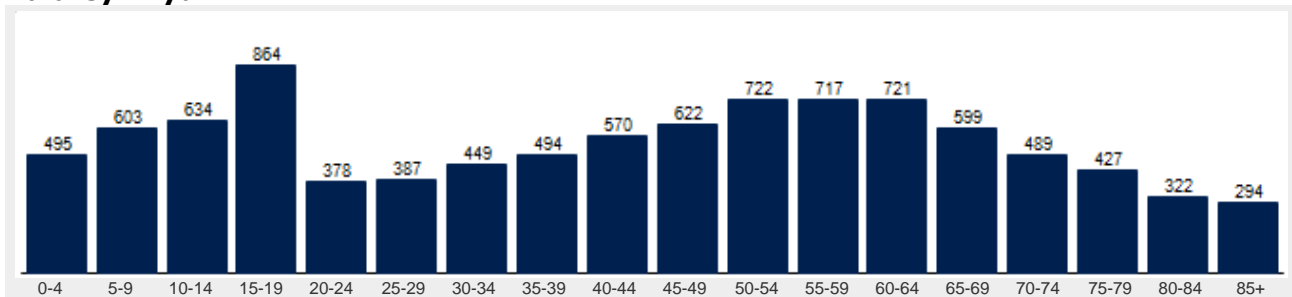
Population	Bala Cynwyd	National
Male	47.5 %	49.2 %
Female	52.5 %	50.8 %
Total Population	9,789	317,504,602
Median Age	45	38

Housing	Bala Cynwyd	National
Vacant Dwellings	289	13,735,766
Owner Occupied	3,238	78,220,269
Renter Occupied	772	41,845,751

Community Summary	Bala Cynwyd	National
Population Growth (since 2000)	3.3 %	12.8 %
Population Density (ppl / mile)	3,542	90
Household Size (ppl)	2.45	2.58
Households w/ Children	29 %	30 %
Annual Residential Turnover	7 %	15 %

Fair Market Rents	Bala Cynwyd	Montgomery County
Studio	\$1,001	\$814
One Bedroom	\$1,180	\$959
Two Bedroom	\$1,422	\$1,156
Three Bedroom	\$1,771	\$1,440
Four Bedroom	\$1,902	\$1,546

Bala Cynwyd





Community Overview

Part 3

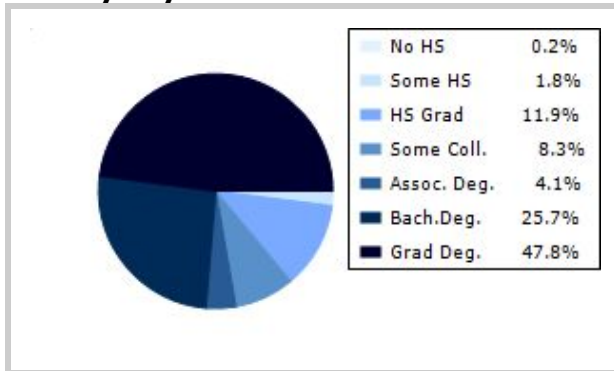
This report shows information collected from US Census and other data collection agencies and is broken down into three general categories: Racial Profile, Marital Status and Education. Each of these categories has been broken down into subcategories making it easy to do a side by side comparison of the two communities.

Education information for both communities has been broken out into two bar graphs. The information at the base of each bar on the bar graph denotes the level of education that colored bar represents. The information to the left of the community bar graph indicates the number of people in that community that have achieved that level of education.

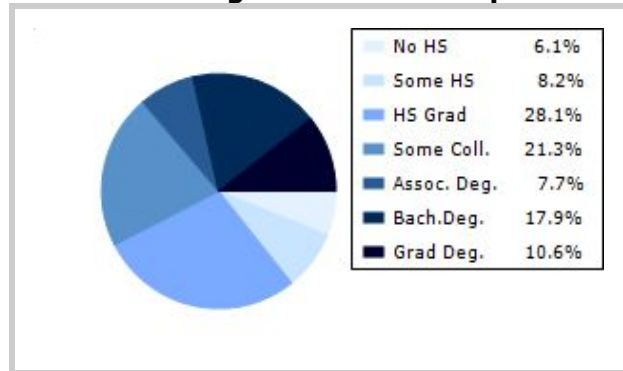
Racial Profile	Bala Cynwyd	National
White	8,586	229,894,228
African American	354	39,728,359
American Indian, Eskimo, Aleut	10	3,151,782
Asian or Pacific Islander	598	15,288,513
Hawaiian	2	641,051
Other	66	18,461,772

Marital Status	Bala Cynwyd	National
Never Married	24.3 %	31.8 %
Now Married	61.9 %	49.2 %
Separated	0.5 %	2.2 %
Widowed	6.7 %	6.0 %
Divorced	6.6 %	10.7 %
No Family	4.2 %	4.9 %
With Family	47.9 %	47.5 %
With Children	21.0 %	21.4 %
No Children	26.9 %	26.2 %

Bala Cynwyd



National Average Educational Report





Financial Report

Part 4

This report shows information collected from US Census and other data collection agencies and is broken down into six general categories; Median Income, Income, Household Expenses and Median Asset Values. Each of these categories has been broken down into subcategories making it easy to do a side by side comparison of the two communities.

Median Household Income*	Bala Cynwyd	National
Age < 25	\$31,905	\$27,240
Age 25 - 44	\$122,107	\$59,626
Age 45 - 64	\$124,646	\$65,864
Age 65+	\$85,047	\$37,196

* by primary householder age.

Income	Bala Cynwyd	National (in MM)
< 10K	125	8
10K-15K	120	6
15K-20K	95	6
20K-25K	81	6
25K-30K	138	6
30K-35K	146	6
35K-40K	59	6
40K-45K	124	6
45K-50K	35	5
50K-60K	163	10
60K-75K	238	12
75K-100K	568	15
100K-125K	351	10
125K-150K	338	6
> 150K	1431	12

Relative Cost Index	Bala Cynwyd	National
Contributions	127	100
Personal Insurance	138	100
Apparel	113	100
Education	130	100
Entertainment	122	100
Food And Beverages	109	100
Health Care	106	100
Furnishings	121	100
Shelter	118	100
Household Operations	126	100
Misc Expenses	118	100
Personal Care	115	100
Reading	122	100
Tobacco	88	100
Transportation	111	100
Utilities	114	100
Gifts	126	100
Total Expenses	114	100



Employment Information

This report provides a side by side comparison of the Industries, Occupations and Work Force types for the selected communities. Each of these categories has been broken down into subcategories making it easy to do a side by side comparison of the two communities.

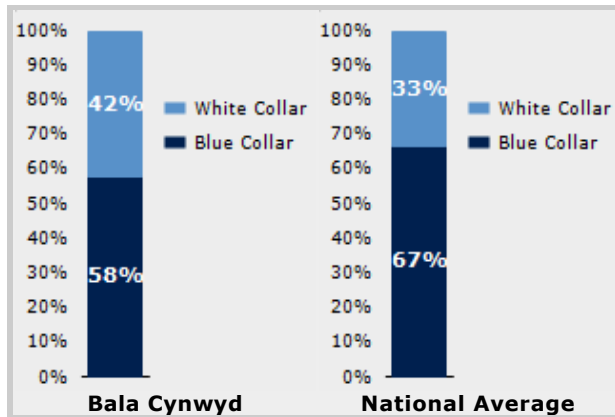
The Industry table to the left shows a breakdown of sixteen different industries and the number of people in each community that are involved in that industry.

The Work Force bar graph below shows the Blue Collar and White Collar percentages for each community, as well as the National Average.

The Occupation table below shows a breakdown of fourteen different occupation classifications and the number of people in each community whose occupation fits that classification.

Industry	Bala Cynwyd	National
Agriculture	7	699,703
Mining	0	347,874
Construction	422	6,828,820
Manufacturing	277	11,664,002
Transportation and Communications	13	3,718,051
Wholesale Trade	76	1,817,818
Retail Trade	1,334	21,647,477
Finance, Insurance & Real Estate	1,418	5,785,438
Services	1,603	8,831,807
Food Services	843	10,239,067
Public Administration	290	8,640,483

Occupation	Bala Cynwyd	National
Executive	1,084	7,810,420
Sales	1,582	17,227,913
Clerical	3,287	25,919,219
Protective Service	164	2,041,240
Arts	638	2,454,555
Social Services	539	4,338,751
Education	258	4,915,376
Health Care	651	4,273,471
Legal	129	1,738,122
Government	0	1,522,109
Computer Science	305	2,290,801
Finance	874	4,944,436



Transportation to Work	Bala Cynwyd	National
Public	387	6,079,053
Drive	3,431	97,304,402
Carpool	367	15,662,618
Walk	93	3,769,819
Bike	12	489,598
Work at Home	229	3,927,567
Average Time to Work	24.0	25.0



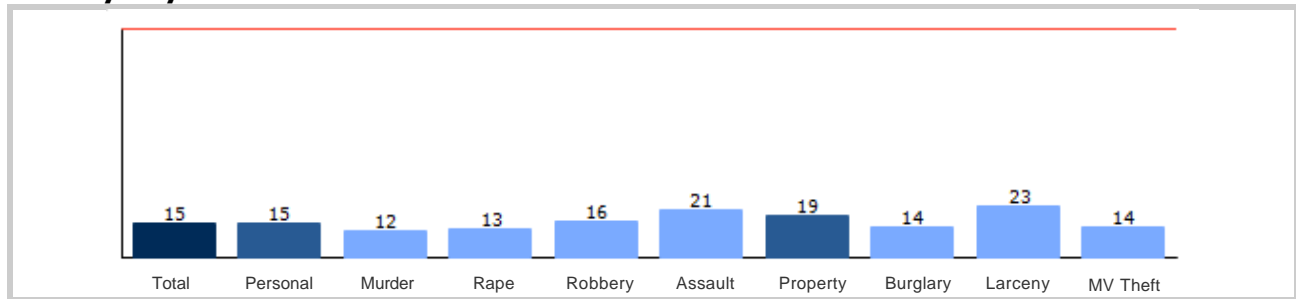
Community Crime Information

Part 6

This report shows information collected from US Census data and other data collection agencies and is broken down by community and by type of crime, and includes a Total Crime total as well. The information at the base of each bar on the bar graph denotes the type of crime that colored bar represents. The information at the top of the community bar graph indicates how that total compares to the national average for that type of offense.

The national average is represented as "100" and is indicated by the red line running across the bar graph. The numbers at the top of each bar represent how much over or under the national average the community rates for this offense.

Bala Cynwyd Crime





Weather and Environmental Details

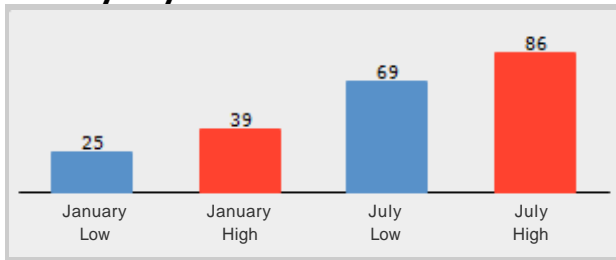
Part 7

Weather Report includes information collected from US Census data and other data collection agencies and shows the weather information for the communities you have selected. Included are temperature highs and lows averaged for the months of January and July for each community.

Environmental Details includes information collected from US Census data and other data collection agencies and shows the environmental details for the communities you have selected. The information at the base of each bar on the bar graph denotes the type of weather risk that colored bar represents. The information at the top of the community bar graph indicates how that total compares to the national average for that type of weather risk.

The national average is represented as "100" and is indicated by a red line running across the bar graph. The numbers at the top of each bar represent how much over or under the national average the community rates for this weather risk.

Bala Cynwyd Weather



Bala Cynwyd Environmental Risk

