



# Introduction

Part 1

This Relocation Report is designed to provide information about the economic and social structures of the selected communities. This report will compare the social and economic conditions of two communities, each containing 1 or more zip codes. Information used in this report has been broken down to the zip code level. If more than one zip code has been selected for a community, the information displayed will be an average of all the information from the zip codes that make up that "community."

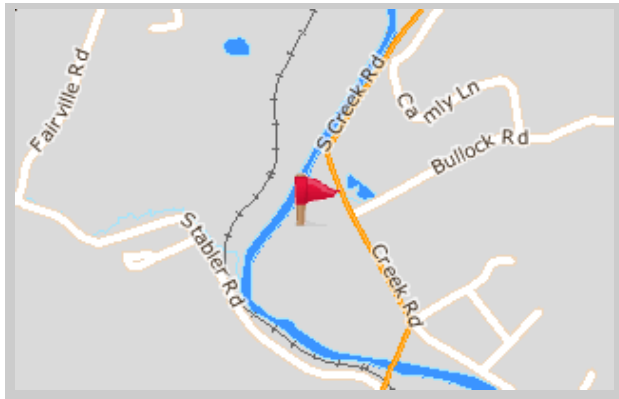
The information found in this report has been compiled and collected from the US Census and other data collection agencies.

The maps below show the center of the communities that are represented in this report.

<b>Chadds Ford</b>
19317 - Pennsylvania

<b>National Average</b>
USA

## Chadds Ford





# Population and Housing

Part 2

This report shows information collected from US Census data and other data collection agencies and is broken down into five general categories: Population, Community Summary, Housing, Housing Stability and the Population Age Demographics Chart.

The Population Age Demographics chart is broken down by community and age group with each bar on the bar graph denoting an age group and the information on top of the bar indicating the number of people in that community for each age group.

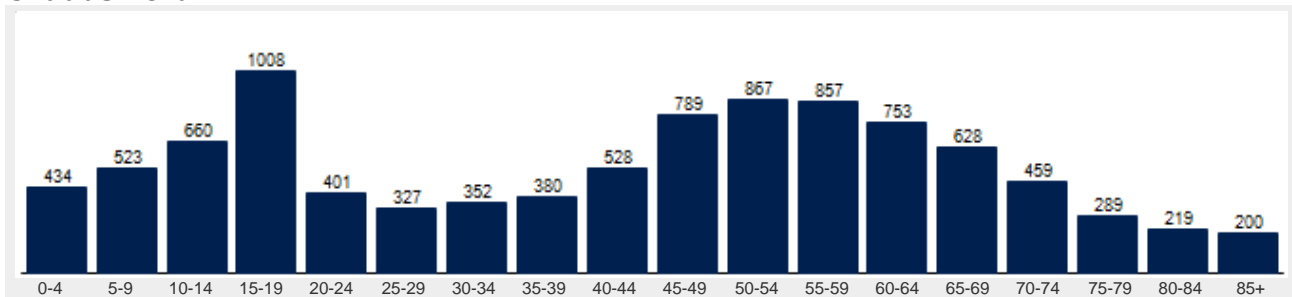
Population	Chadds Ford	National
Male	48.2 %	49.2 %
Female	51.8 %	50.8 %
Total Population	9,675	317,504,602
Median Age	46	38

Housing	Chadds Ford	National
Vacant Dwellings	158	13,735,766
Owner Occupied	3,080	78,220,269
Renter Occupied	620	41,845,751

Community Summary	Chadds Ford	National
Population Growth (since 2000)	25.1 %	12.8 %
Population Density (ppl / mile)	458	90
Household Size (ppl)	2.61	2.58
Households w/ Children	33 %	30 %
Annual Residential Turnover	5 %	15 %

Fair Market Rents	Chadds Ford	Delaware County
Studio	\$1,009	\$814
One Bedroom	\$1,189	\$959
Two Bedroom	\$1,433	\$1,156
Three Bedroom	\$1,786	\$1,440
Four Bedroom	\$1,917	\$1,546

## Chadds Ford





# Community Overview

Part 3

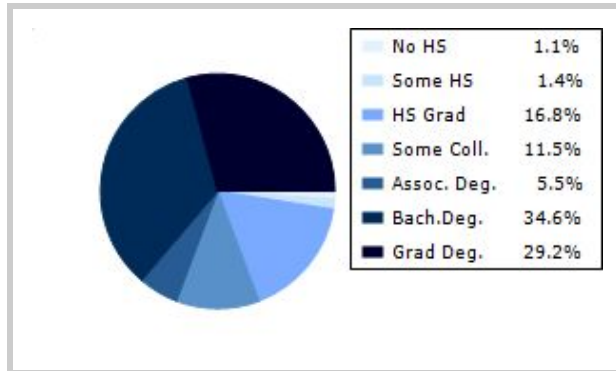
This report shows information collected from US Census and other data collection agencies and is broken down into three general categories: Racial Profile, Marital Status and Education. Each of these categories has been broken down into subcategories making it easy to do a side by side comparison of the two communities.

Education information for both communities has been broken out into two bar graphs. The information at the base of each bar on the bar graph denotes the level of education that colored bar represents. The information to the left of the community bar graph indicates the number of people in that community that have achieved that level of education.

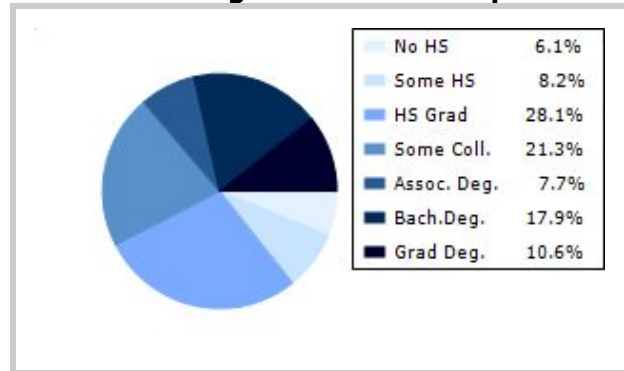
Racial Profile	Chadds Ford	National
White	8,820	229,894,228
African American	140	39,728,359
American Indian, Eskimo, Aleut	1	3,151,782
Asian or Pacific Islander	513	15,288,513
Hawaiian	0	641,051
Other	50	18,461,772

Marital Status	Chadds Ford	National
Never Married	18.8 %	31.8 %
Now Married	66.7 %	49.2 %
Separated	0.7 %	2.2 %
Widowed	5.4 %	6.0 %
Divorced	8.4 %	10.7 %
No Family	3.2 %	4.9 %
With Family	48.4 %	47.5 %
With Children	21.9 %	21.4 %
No Children	26.5 %	26.2 %

## Chadds Ford



## National Average Educational Report





# Financial Report

Part 4

This report shows information collected from US Census and other data collection agencies and is broken down into six general categories; Median Income, Income, Household Expenses and Median Asset Values. Each of these categories has been broken down into subcategories making it easy to do a side by side comparison of the two communities.

Median Household Income*	Chadds Ford	National
Age < 25	\$37,500	\$27,240
Age 25 - 44	\$135,291	\$59,626
Age 45 - 64	\$120,985	\$65,864
Age 65+	\$91,249	\$37,196

\* by primary householder age.

Income	Chadds Ford	National (in MM)
< 10K	38	8
10K-15K	35	6
15K-20K	41	6
20K-25K	40	6
25K-30K	114	6
30K-35K	77	6
35K-40K	93	6
40K-45K	76	6
45K-50K	67	5
50K-60K	124	10
60K-75K	393	12
75K-100K	466	15
100K-125K	461	10
125K-150K	307	6
> 150K	1368	12

Relative Cost Index	Chadds Ford	National
Contributions	135	100
Personal Insurance	147	100
Apparel	120	100
Education	139	100
Entertainment	128	100
Food And Beverages	115	100
Health Care	116	100
Furnishings	128	100
Shelter	123	100
Household Operations	132	100
Misc Expenses	125	100
Personal Care	122	100
Reading	128	100
Tobacco	91	100
Transportation	116	100
Utilities	116	100
Gifts	135	100
<b>Total Expenses</b>	<b>120</b>	<b>100</b>



# Employment Information

This report provides a side by side comparison of the Industries, Occupations and Work Force types for the selected communities. Each of these categories has been broken down into subcategories making it easy to do a side by side comparison of the two communities.

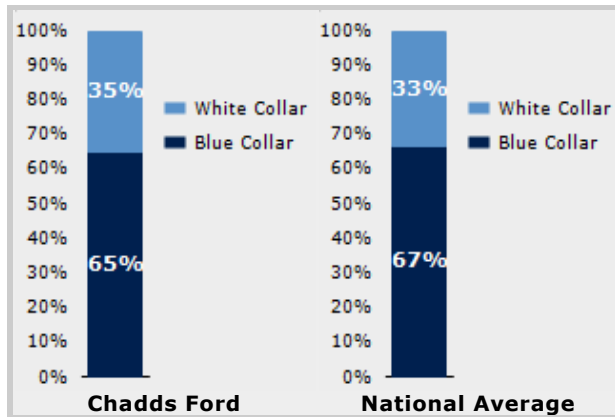
The Industry table to the left shows a breakdown of sixteen different industries and the number of people in each community that are involved in that industry.

The Work Force bar graph below shows the Blue Collar and White Collar percentages for each community, as well as the National Average.

The Occupation table below shows a breakdown of fourteen different occupation classifications and the number of people in each community whose occupation fits that classification.

Industry	Chadds Ford	National
Agriculture	92	699,703
Mining	32	347,874
Construction	183	6,828,820
Manufacturing	613	11,664,002
Transportation and Communications	5	3,718,051
Wholesale Trade	95	1,817,818
Retail Trade	1,099	21,647,477
Finance, Insurance & Real Estate	607	5,785,438
Services	545	8,831,807
Food Services	495	10,239,067
Public Administration	94	8,640,483

Occupation	Chadds Ford	National
Executive	478	7,810,420
Sales	869	17,227,913
Clerical	1,356	25,919,219
Protective Service	48	2,041,240
Arts	95	2,454,555
Social Services	175	4,338,751
Education	135	4,915,376
Health Care	244	4,273,471
Legal	64	1,738,122
Government	0	1,522,109
Computer Science	157	2,290,801
Finance	354	4,944,436



Transportation to Work	Chadds Ford	National
Public	38	6,079,053
Drive	3,265	97,304,402
Carpool	271	15,662,618
Walk	64	3,769,819
Bike	5	489,598
Work at Home	229	3,927,567
Average Time to Work	27.0	25.0



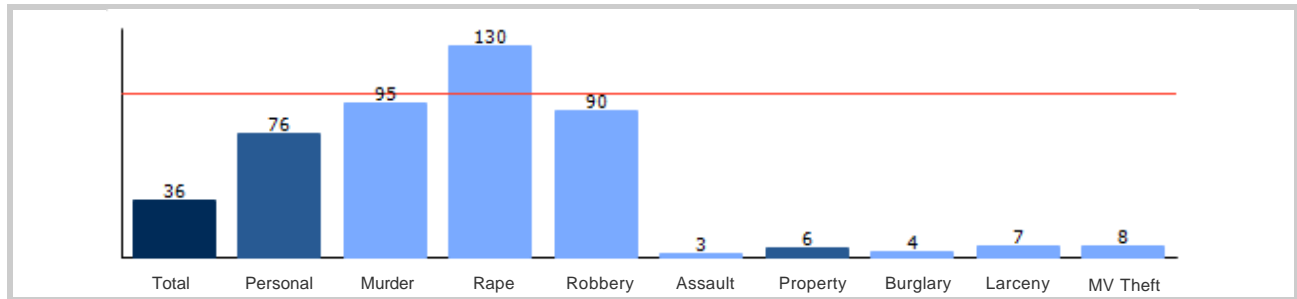
# Community Crime Information

Part 6

This report shows information collected from US Census data and other data collection agencies and is broken down by community and by type of crime, and includes a Total Crime total as well. The information at the base of each bar on the bar graph denotes the type of crime that colored bar represents. The information at the top of the community bar graph indicates how that total compares to the national average for that type of offense.

The national average is represented as "100" and is indicated by the red line running across the bar graph. The numbers at the top of each bar represent how much over or under the national average the community rates for this offense.

## Chadds Ford Crime





# Weather and Environmental Details

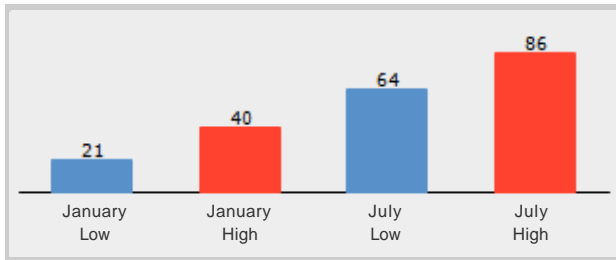
Part 7

**Weather Report** includes information collected from US Census data and other data collection agencies and shows the weather information for the communities you have selected. Included are temperature highs and lows averaged for the months of January and July for each community.

**Environmental Details** includes information collected from US Census data and other data collection agencies and shows the environmental details for the communities you have selected. The information at the base of each bar on the bar graph denotes the type of weather risk that colored bar represents. The information at the top of the community bar graph indicates how that total compares to the national average for that type of weather risk.

The national average is represented as "100" and is indicated by a red line running across the bar graph. The numbers at the top of each bar represent how much over or under the national average the community rates for this weather risk.

## Chadds Ford Weather



## Chadds Ford Environmental Risk

