



Introduction

Part 1

This Relocation Report is designed to provide information about the economic and social structures of the selected communities. This report will compare the social and economic conditions of two communities, each containing 1 or more zip codes. Information used in this report has been broken down to the zip code level. If more than one zip code has been selected for a community, the information displayed will be an average of all the information from the zip codes that make up that "community."

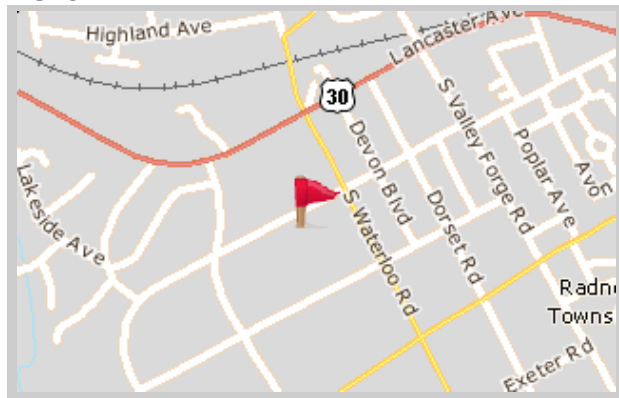
The information found in this report has been compiled and collected from the US Census and other data collection agencies.

The maps below show the center of the communities that are represented in this report.

Devon
19333 - Pennsylvania

National Average
USA

Devon





Population and Housing

Part 2

This report shows information collected from US Census data and other data collection agencies and is broken down into five general categories: Population, Community Summary, Housing, Housing Stability and the Population Age Demographics Chart.

The Population Age Demographics chart is broken down by community and age group with each bar on the bar graph denoting an age group and the information on top of the bar indicating the number of people in that community for each age group.

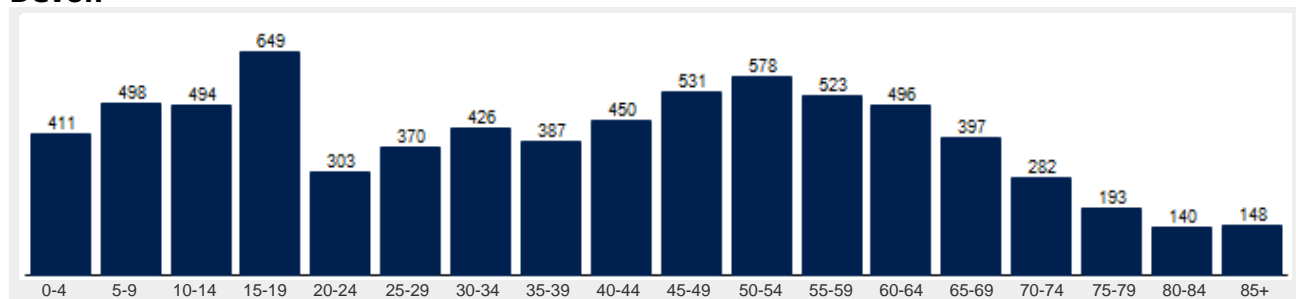
Population	Devon	National
Male	47.4 %	49.2 %
Female	52.6 %	50.8 %
Total Population	7,274	317,504,602
Median Age	41	38

Housing	Devon	National
Vacant Dwellings	206	13,735,766
Owner Occupied	2,139	78,220,269
Renter Occupied	946	41,845,751

Community Summary	Devon	National
Population Growth (since 2000)	1.8 %	12.8 %
Population Density (ppl / mile)	2,107	90
Household Size (ppl)	2.47	2.58
Households w/ Children	33 %	30 %
Annual Residential Turnover	11 %	15 %

Fair Market Rents	Devon	Chester County
Studio	\$537	\$814
One Bedroom	\$633	\$959
Two Bedroom	\$763	\$1,156
Three Bedroom	\$950	\$1,440
Four Bedroom	\$1,020	\$1,546

Devon





Community Overview

Part 3

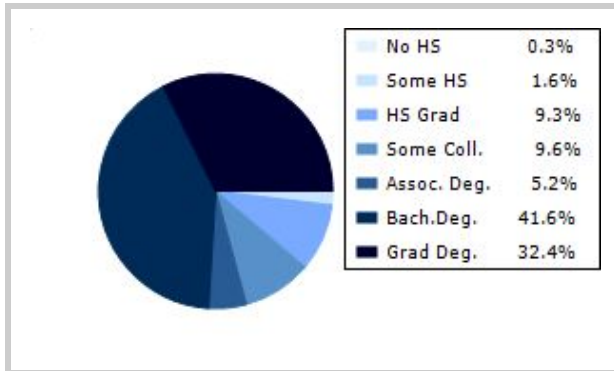
This report shows information collected from US Census and other data collection agencies and is broken down into three general categories: Racial Profile, Marital Status and Education. Each of these categories has been broken down into subcategories making it easy to do a side by side comparison of the two communities.

Education information for both communities has been broken out into two bar graphs. The information at the base of each bar on the bar graph denotes the level of education that colored bar represents. The information to the left of the community bar graph indicates the number of people in that community that have achieved that level of education.

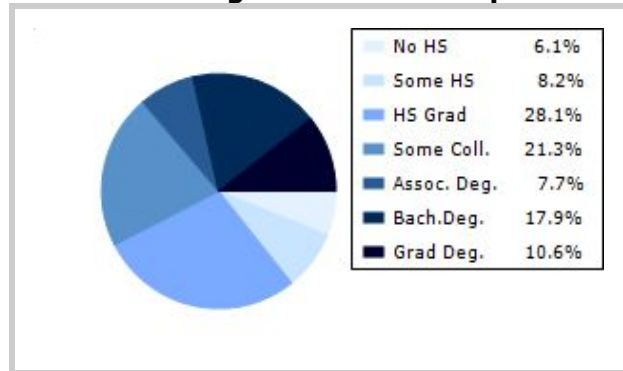
Racial Profile	Devon	National
White	6,211	229,894,228
African American	183	39,728,359
American Indian, Eskimo, Aleut	0	3,151,782
Asian or Pacific Islander	736	15,288,513
Hawaiian	0	641,051
Other	55	18,461,772

Marital Status	Devon	National
Never Married	25.7 %	31.8 %
Now Married	62.4 %	49.2 %
Separated	1.3 %	2.2 %
Widowed	4.0 %	6.0 %
Divorced	6.6 %	10.7 %
No Family	5.3 %	4.9 %
With Family	47.3 %	47.5 %
With Children	23.9 %	21.4 %
No Children	23.4 %	26.2 %

Devon



National Average Educational Report





Financial Report

Part 4

This report shows information collected from US Census and other data collection agencies and is broken down into six general categories; Median Income, Income, Household Expenses and Median Asset Values. Each of these categories has been broken down into subcategories making it easy to do a side by side comparison of the two communities.

Median Household Income*	Devon	National
Age < 25	\$21,914	\$27,240
Age 25 - 44	\$107,026	\$59,626
Age 45 - 64	\$137,912	\$65,864
Age 65+	\$76,144	\$37,196

* by primary householder age.

Income	Devon	National (in MM)
< 10K	128	8
10K-15K	59	6
15K-20K	27	6
20K-25K	103	6
25K-30K	67	6
30K-35K	106	6
35K-40K	54	6
40K-45K	62	6
45K-50K	76	5
50K-60K	189	10
60K-75K	268	12
75K-100K	381	15
100K-125K	224	10
125K-150K	290	6
> 150K	1052	12

Relative Cost Index	Devon	National
Contributions	120	100
Personal Insurance	130	100
Apparel	111	100
Education	127	100
Entertainment	116	100
Food And Beverages	104	100
Health Care	103	100
Furnishings	117	100
Shelter	112	100
Household Operations	121	100
Misc Expenses	115	100
Personal Care	112	100
Reading	115	100
Tobacco	88	100
Transportation	109	100
Utilities	104	100
Gifts	120	100
Total Expenses	110	100



Employment Information

This report provides a side by side comparison of the Industries, Occupations and Work Force types for the selected communities. Each of these categories has been broken down into subcategories making it easy to do a side by side comparison of the two communities.

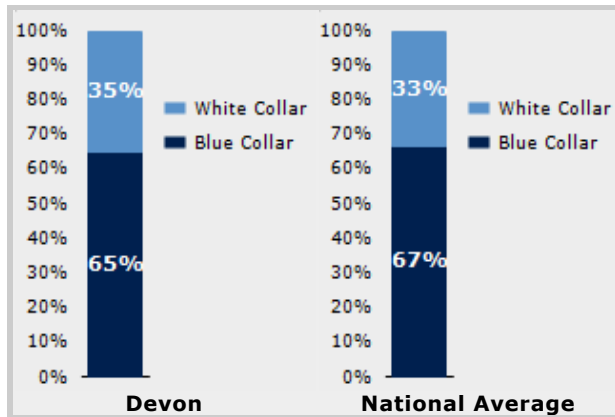
The Industry table to the left shows a breakdown of sixteen different industries and the number of people in each community that are involved in that industry.

The Work Force bar graph below shows the Blue Collar and White Collar percentages for each community, as well as the National Average.

The Occupation table below shows a breakdown of fourteen different occupation classifications and the number of people in each community whose occupation fits that classification.

Industry	Devon	National
Agriculture	8	699,703
Mining	0	347,874
Construction	182	6,828,820
Manufacturing	258	11,664,002
Transportation and Communications	4	3,718,051
Wholesale Trade	11	1,817,818
Retail Trade	716	21,647,477
Finance, Insurance & Real Estate	503	5,785,438
Services	111	8,831,807
Food Services	177	10,239,067
Public Administration	44	8,640,483

Occupation	Devon	National
Executive	246	7,810,420
Sales	530	17,227,913
Clerical	778	25,919,219
Protective Service	27	2,041,240
Arts	46	2,454,555
Social Services	146	4,338,751
Education	66	4,915,376
Health Care	131	4,273,471
Legal	28	1,738,122
Government	0	1,522,109
Computer Science	84	2,290,801
Finance	190	4,944,436



Transportation to Work	Devon	National
Public	387	6,079,053
Drive	2,624	97,304,402
Carpool	208	15,662,618
Walk	52	3,769,819
Bike	0	489,598
Work at Home	232	3,927,567
Average Time to Work	26.0	25.0



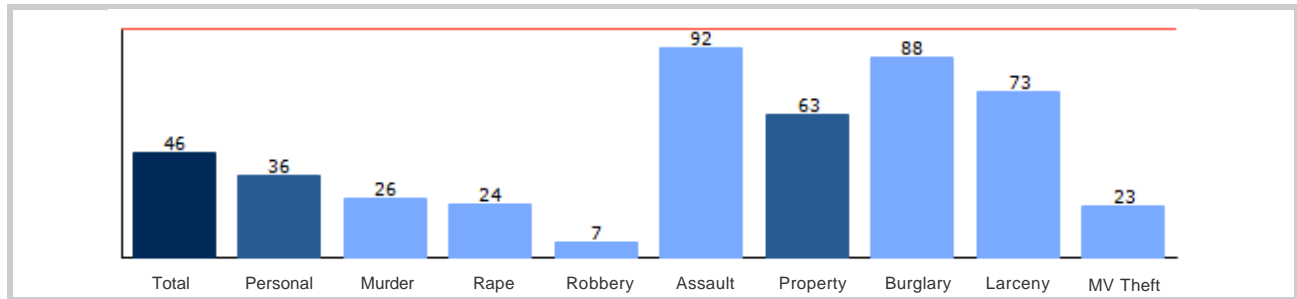
Community Crime Information

Part 6

This report shows information collected from US Census data and other data collection agencies and is broken down by community and by type of crime, and includes a Total Crime total as well. The information at the base of each bar on the bar graph denotes the type of crime that colored bar represents. The information at the top of the community bar graph indicates how that total compares to the national average for that type of offense.

The national average is represented as "100" and is indicated by the red line running across the bar graph. The numbers at the top of each bar represent how much over or under the national average the community rates for this offense.

Devon Crime





Weather and Environmental Details

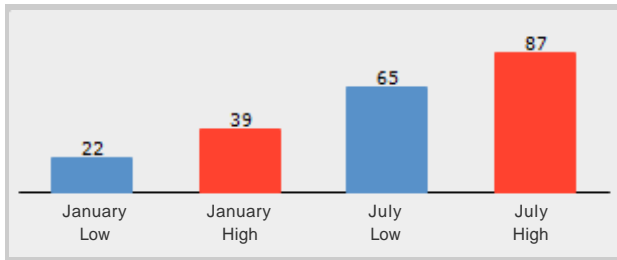
Part 7

Weather Report includes information collected from US Census data and other data collection agencies and shows the weather information for the communities you have selected. Included are temperature highs and lows averaged for the months of January and July for each community.

Environmental Details includes information collected from US Census data and other data collection agencies and shows the environmental details for the communities you have selected. The information at the base of each bar on the bar graph denotes the type of weather risk that colored bar represents. The information at the top of the community bar graph indicates how that total compares to the national average for that type of weather risk.

The national average is represented as "100" and is indicated by a red line running across the bar graph. The numbers at the top of each bar represent how much over or under the national average the community rates for this weather risk.

Devon Weather



Devon Environmental Risk

