



# Introduction

Part 1

This Relocation Report is designed to provide information about the economic and social structures of the selected communities. This report will compare the social and economic conditions of two communities, each containing 1 or more zip codes. Information used in this report has been broken down to the zip code level. If more than one zip code has been selected for a community, the information displayed will be an average of all the information from the zip codes that make up that "community."

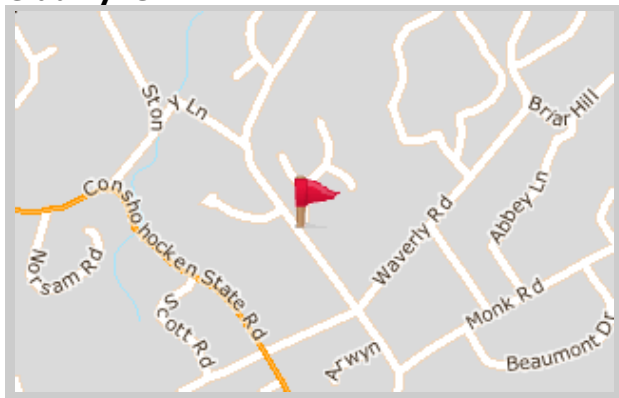
The information found in this report has been compiled and collected from the US Census and other data collection agencies.

The maps below show the center of the communities that are represented in this report.

<b>Gladwyne</b>
19035 - Pennsylvania

<b>National Average</b>
USA

## Gladwyne





# Population and Housing

Part 2

This report shows information collected from US Census data and other data collection agencies and is broken down into five general categories: Population, Community Summary, Housing, Housing Stability and the Population Age Demographics Chart.

The Population Age Demographics chart is broken down by community and age group with each bar on the bar graph denoting an age group and the information on top of the bar indicating the number of people in that community for each age group.

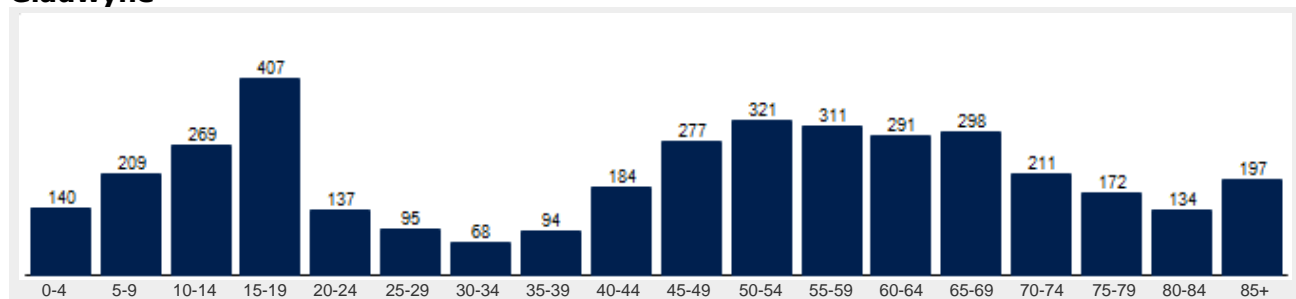
Population	Gladwyne	National
Male	46.6 %	49.2 %
Female	53.4 %	50.8 %
Total Population	3,814	317,504,602
Median Age	50	38

Housing	Gladwyne	National
Vacant Dwellings	137	13,735,766
Owner Occupied	1,213	78,220,269
Renter Occupied	249	41,845,751

Community Summary	Gladwyne	National
Population Growth (since 2000)	-4.0 %	12.8 %
Population Density (ppl / mile)	801	90
Household Size (ppl)	2.54	2.58
Households w/ Children	29 %	30 %
Annual Residential Turnover	6 %	15 %

Fair Market Rents	Gladwyne	Montgomery County
Studio	\$1,066	\$814
One Bedroom	\$1,256	\$959
Two Bedroom	\$1,514	\$1,156
Three Bedroom	\$1,886	\$1,440
Four Bedroom	\$2,025	\$1,546

## Gladwyne





# Community Overview

Part 3

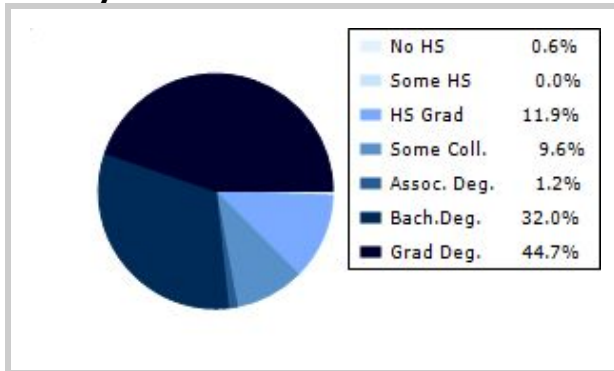
This report shows information collected from US Census and other data collection agencies and is broken down into three general categories: Racial Profile, Marital Status and Education. Each of these categories has been broken down into subcategories making it easy to do a side by side comparison of the two communities.

Education information for both communities has been broken out into two bar graphs. The information at the base of each bar on the bar graph denotes the level of education that colored bar represents. The information to the left of the community bar graph indicates the number of people in that community that have achieved that level of education.

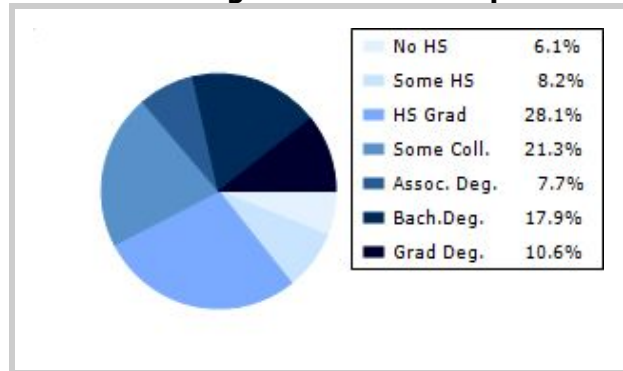
Racial Profile	Gladwyne	National
White	3,563	229,894,228
African American	50	39,728,359
American Indian, Eskimo, Aleut	0	3,151,782
Asian or Pacific Islander	148	15,288,513
Hawaiian	0	641,051
Other	16	18,461,772

Marital Status	Gladwyne	National
Never Married	18.1 %	31.8 %
Now Married	65.4 %	49.2 %
Separated	1.4 %	2.2 %
Widowed	9.5 %	6.0 %
Divorced	5.6 %	10.7 %
No Family	2.3 %	4.9 %
With Family	48.9 %	47.5 %
With Children	19.6 %	21.4 %
No Children	29.2 %	26.2 %

## Gladwyne



## National Average Educational Report





# Financial Report

Part 4

This report shows information collected from US Census and other data collection agencies and is broken down into six general categories; Median Income, Income, Household Expenses and Median Asset Values. Each of these categories has been broken down into subcategories making it easy to do a side by side comparison of the two communities.

Median Household Income*	Gladwyne	National
Age < 25	\$127,622	\$27,240
Age 25 - 44	\$172,287	\$59,626
Age 45 - 64	\$162,294	\$65,864
Age 65+	\$97,059	\$37,196

\* by primary householder age.

Income	Gladwyne	National (in MM)
< 10K	11	8
10K-15K	58	6
15K-20K	17	6
20K-25K	29	6
25K-30K	47	6
30K-35K	5	6
35K-40K	38	6
40K-45K	11	6
45K-50K	10	5
50K-60K	13	10
60K-75K	125	12
75K-100K	115	15
100K-125K	158	10
125K-150K	75	6
> 150K	748	12

Relative Cost Index	Gladwyne	National
Contributions	148	100
Personal Insurance	163	100
Apparel	122	100
Education	150	100
Entertainment	135	100
Food And Beverages	117	100
Health Care	116	100
Furnishings	134	100
Shelter	130	100
Household Operations	141	100
Misc Expenses	133	100
Personal Care	126	100
Reading	138	100
Tobacco	87	100
Transportation	119	100
Utilities	122	100
Gifts	150	100
<b>Total Expenses</b>	125	100



# Employment Information

This report provides a side by side comparison of the Industries, Occupations and Work Force types for the selected communities. Each of these categories has been broken down into subcategories making it easy to do a side by side comparison of the two communities.

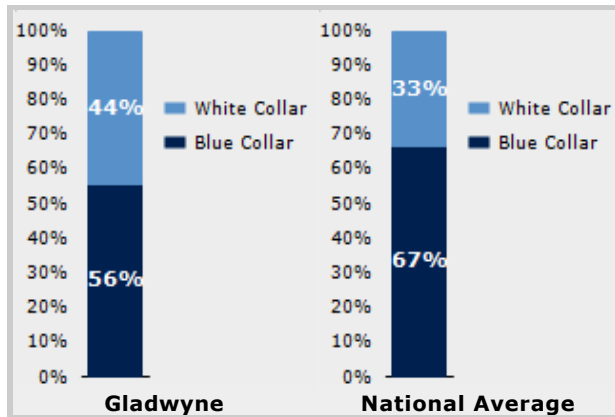
The Industry table to the left shows a breakdown of sixteen different industries and the number of people in each community that are involved in that industry.

The Work Force bar graph below shows the Blue Collar and White Collar percentages for each community, as well as the National Average.

The Occupation table below shows a breakdown of fourteen different occupation classifications and the number of people in each community whose occupation fits that classification.

Industry	Gladwyne	National
Agriculture	37	699,703
Mining	0	347,874
Construction	62	6,828,820
Manufacturing	91	11,664,002
Transportation and Communications	0	3,718,051
Wholesale Trade	15	1,817,818
Retail Trade	86	21,647,477
Finance, Insurance & Real Estate	27	5,785,438
Services	109	8,831,807
Food Services	40	10,239,067
Public Administration	24	8,640,483

Occupation	Gladwyne	National
Executive	61	7,810,420
Sales	71	17,227,913
Clerical	153	25,919,219
Protective Service	8	2,041,240
Arts	16	2,454,555
Social Services	75	4,338,751
Education	43	4,915,376
Health Care	126	4,273,471
Legal	1	1,738,122
Government	0	1,522,109
Computer Science	9	2,290,801
Finance	27	4,944,436



Transportation to Work	Gladwyne	National
Public	67	6,079,053
Drive	1,285	97,304,402
Carpool	112	15,662,618
Walk	43	3,769,819
Bike	0	489,598
Work at Home	97	3,927,567
Average Time to Work	24.0	25.0



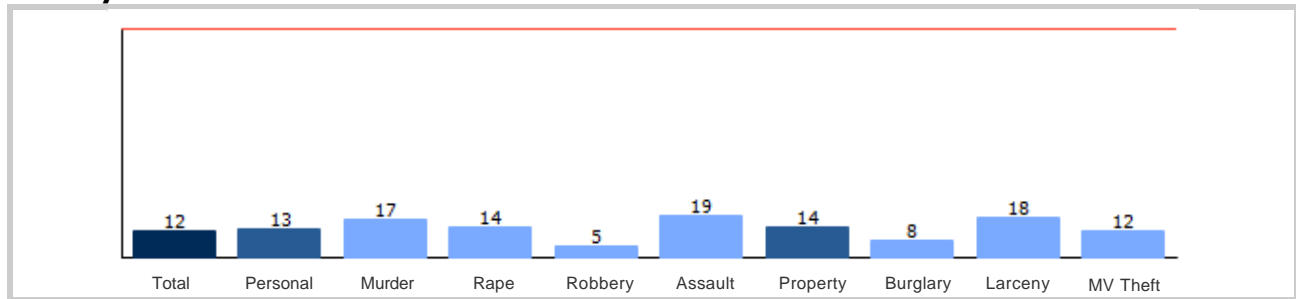
# Community Crime Information

Part 6

This report shows information collected from US Census data and other data collection agencies and is broken down by community and by type of crime, and includes a Total Crime total as well. The information at the base of each bar on the bar graph denotes the type of crime that colored bar represents. The information at the top of the community bar graph indicates how that total compares to the national average for that type of offense.

The national average is represented as "100" and is indicated by the red line running across the bar graph. The numbers at the top of each bar represent how much over or under the national average the community rates for this offense.

## Gladwyne Crime





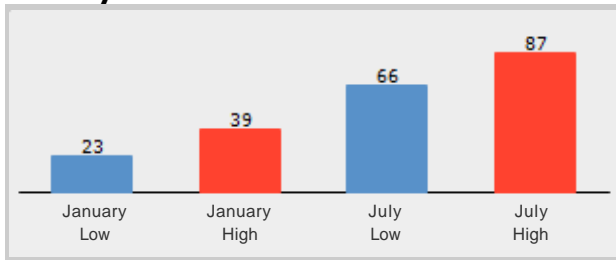
# Weather and Environmental Details

**Weather Report** includes information collected from US Census data and other data collection agencies and shows the weather information for the communities you have selected. Included are temperature highs and lows averaged for the months of January and July for each community.

**Environmental Details** includes information collected from US Census data and other data collection agencies and shows the environmental details for the communities you have selected. The information at the base of each bar on the bar graph denotes the type of weather risk that colored bar represents. The information at the top of the community bar graph indicates how that total compares to the national average for that type of weather risk.

The national average is represented as "100" and is indicated by a red line running across the bar graph. The numbers at the top of each bar represent how much over or under the national average the community rates for this weather risk.

## Gladwyne Weather



## Gladwyne Environmental Risk

