



Introduction

Part 1

This Relocation Report is designed to provide information about the economic and social structures of the selected communities. This report will compare the social and economic conditions of two communities, each containing 1 or more zip codes. Information used in this report has been broken down to the zip code level. If more than one zip code has been selected for a community, the information displayed will be an average of all the information from the zip codes that make up that "community."

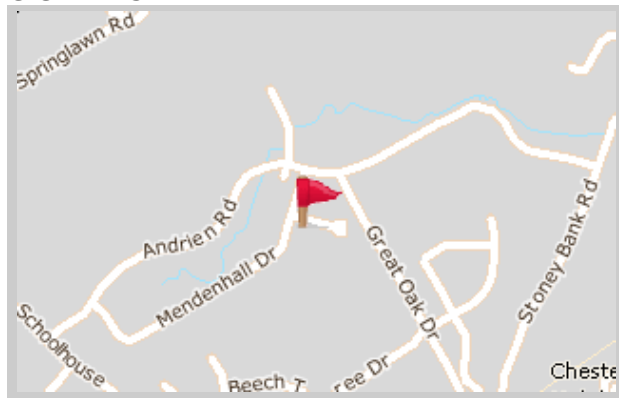
The information found in this report has been compiled and collected from the US Census and other data collection agencies.

The maps below show the center of the communities that are represented in this report.

Glen Mills
19342 - Pennsylvania

National Average
USA

Glen Mills





Population and Housing

Part 2

This report shows information collected from US Census data and other data collection agencies and is broken down into five general categories: Population, Community Summary, Housing, Housing Stability and the Population Age Demographics Chart.

The Population Age Demographics chart is broken down by community and age group with each bar on the bar graph denoting an age group and the information on top of the bar indicating the number of people in that community for each age group.

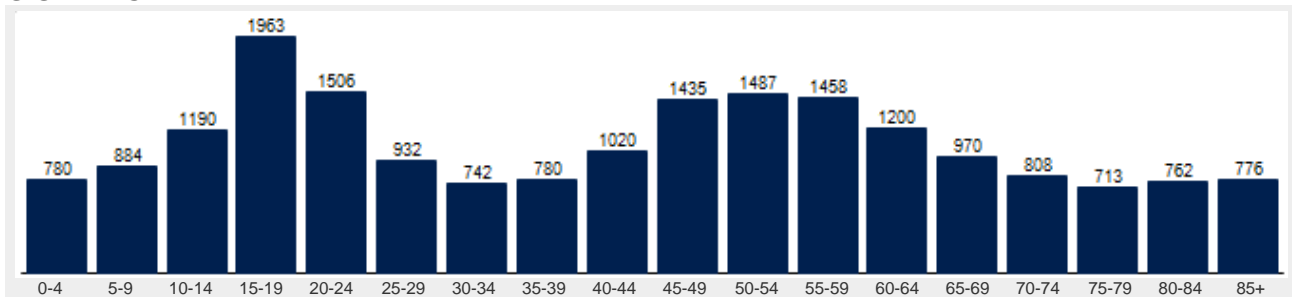
Population	Glen Mills	National
Male	50.2 %	49.2 %
Female	49.8 %	50.8 %
Total Population	19,406	317,504,602
Median Age	45	38

Housing	Glen Mills	National
Vacant Dwellings	574	13,735,766
Owner Occupied	5,597	78,220,269
Renter Occupied	2,054	41,845,751

Community Summary	Glen Mills	National
Population Growth (since 2000)	48.9 %	12.8 %
Population Density (ppl / mile)	995	90
Household Size (ppl)	2.47	2.58
Households w/ Children	27 %	30 %
Annual Residential Turnover	14 %	15 %

Fair Market Rents	Glen Mills	Delaware County
Studio	\$814	\$814
One Bedroom	\$959	\$959
Two Bedroom	\$1,156	\$1,156
Three Bedroom	\$1,440	\$1,440
Four Bedroom	\$1,546	\$1,546

Glen Mills





Community Overview

Part 3

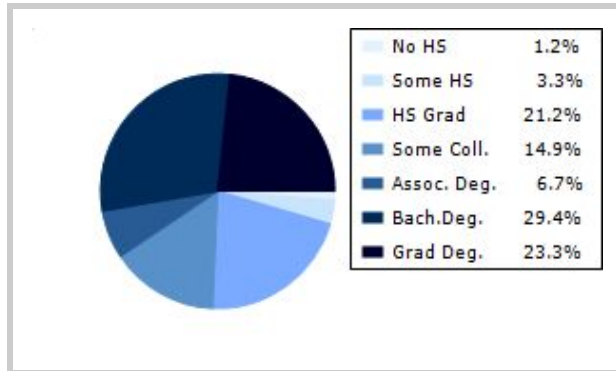
This report shows information collected from US Census and other data collection agencies and is broken down into three general categories: Racial Profile, Marital Status and Education. Each of these categories has been broken down into subcategories making it easy to do a side by side comparison of the two communities.

Education information for both communities has been broken out into two bar graphs. The information at the base of each bar on the bar graph denotes the level of education that colored bar represents. The information to the left of the community bar graph indicates the number of people in that community that have achieved that level of education.

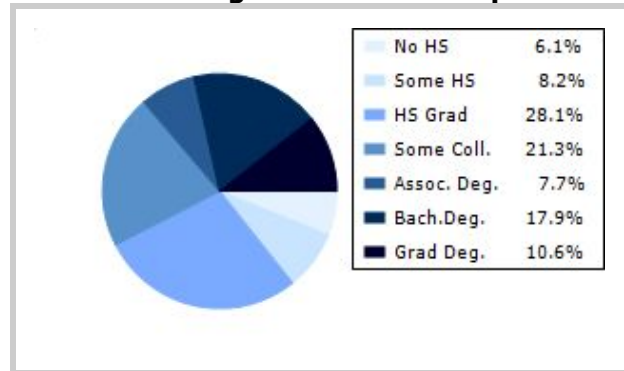
Racial Profile	Glen Mills	National
White	16,352	229,894,228
African American	1,783	39,728,359
American Indian, Eskimo, Aleut	11	3,151,782
Asian or Pacific Islander	886	15,288,513
Hawaiian	2	641,051
Other	109	18,461,772

Marital Status	Glen Mills	National
Never Married	26.9 %	31.8 %
Now Married	54.9 %	49.2 %
Separated	1.5 %	2.2 %
Widowed	10.1 %	6.0 %
Divorced	6.6 %	10.7 %
No Family	2.5 %	4.9 %
With Family	48.7 %	47.5 %
With Children	19.5 %	21.4 %
No Children	29.2 %	26.2 %

Glen Mills



National Average Educational Report





Financial Report

Part 4

This report shows information collected from US Census and other data collection agencies and is broken down into six general categories; Median Income, Income, Household Expenses and Median Asset Values. Each of these categories has been broken down into subcategories making it easy to do a side by side comparison of the two communities.

Median Household Income*	Glen Mills	National
Age < 25	\$13,045	\$27,240
Age 25 - 44	\$112,252	\$59,626
Age 45 - 64	\$132,498	\$65,864
Age 65+	\$57,306	\$37,196

* by primary householder age.

Income	Glen Mills	National (in MM)
< 10K	187	8
10K-15K	156	6
15K-20K	165	6
20K-25K	154	6
25K-30K	228	6
30K-35K	268	6
35K-40K	234	6
40K-45K	334	6
45K-50K	245	5
50K-60K	531	10
60K-75K	762	12
75K-100K	873	15
100K-125K	667	10
125K-150K	608	6
> 150K	2241	12

Relative Cost Index	Glen Mills	National
Contributions	144	100
Personal Insurance	152	100
Apparel	131	100
Education	150	100
Entertainment	141	100
Food And Beverages	127	100
Health Care	125	100
Furnishings	139	100
Shelter	137	100
Household Operations	143	100
Misc Expenses	140	100
Personal Care	134	100
Reading	141	100
Tobacco	107	100
Transportation	131	100
Utilities	133	100
Gifts	148	100
Total Expenses	133	100



Employment Information

This report provides a side by side comparison of the Industries, Occupations and Work Force types for the selected communities. Each of these categories has been broken down into subcategories making it easy to do a side by side comparison of the two communities.

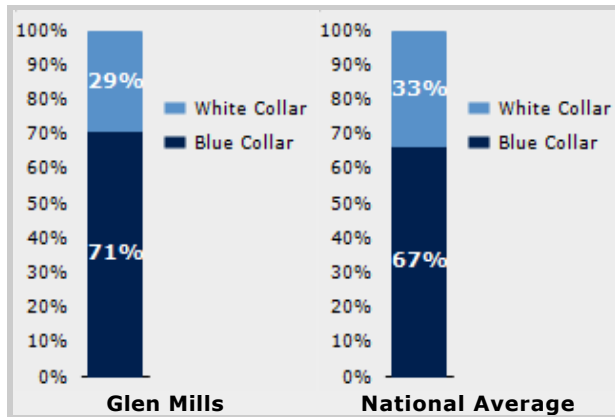
The Industry table to the left shows a breakdown of sixteen different industries and the number of people in each community that are involved in that industry.

The Work Force bar graph below shows the Blue Collar and White Collar percentages for each community, as well as the National Average.

The Occupation table below shows a breakdown of fourteen different occupation classifications and the number of people in each community whose occupation fits that classification.

Industry	Glen Mills	National
Agriculture	10	699,703
Mining	1	347,874
Construction	541	6,828,820
Manufacturing	229	11,664,002
Transportation and Communications	110	3,718,051
Wholesale Trade	61	1,817,818
Retail Trade	1,624	21,647,477
Finance, Insurance & Real Estate	368	5,785,438
Services	690	8,831,807
Food Services	554	10,239,067
Public Administration	161	8,640,483

Occupation	Glen Mills	National
Executive	497	7,810,420
Sales	1,464	17,227,913
Clerical	1,560	25,919,219
Protective Service	367	2,041,240
Arts	107	2,454,555
Social Services	268	4,338,751
Education	236	4,915,376
Health Care	256	4,273,471
Legal	40	1,738,122
Government	0	1,522,109
Computer Science	117	2,290,801
Finance	288	4,944,436



Transportation to Work	Glen Mills	National
Public	137	6,079,053
Drive	4,898	97,304,402
Carpool	386	15,662,618
Walk	147	3,769,819
Bike	4	489,598
Work at Home	273	3,927,567
Average Time to Work	27.0	25.0



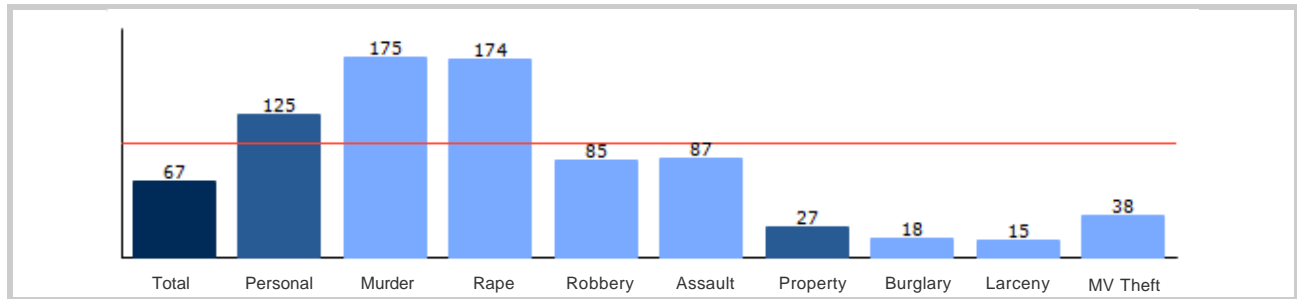
Community Crime Information

Part 6

This report shows information collected from US Census data and other data collection agencies and is broken down by community and by type of crime, and includes a Total Crime total as well. The information at the base of each bar on the bar graph denotes the type of crime that colored bar represents. The information at the top of the community bar graph indicates how that total compares to the national average for that type of offense.

The national average is represented as "100" and is indicated by the red line running across the bar graph. The numbers at the top of each bar represent how much over or under the national average the community rates for this offense.

Glen Mills Crime





Weather and Environmental Details

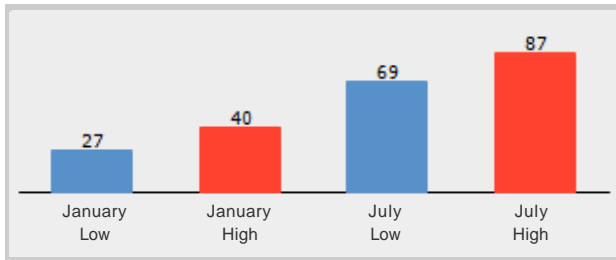
Part 7

Weather Report includes information collected from US Census data and other data collection agencies and shows the weather information for the communities you have selected. Included are temperature highs and lows averaged for the months of January and July for each community.

Environmental Details includes information collected from US Census data and other data collection agencies and shows the environmental details for the communities you have selected. The information at the base of each bar on the bar graph denotes the type of weather risk that colored bar represents. The information at the top of the community bar graph indicates how that total compares to the national average for that type of weather risk.

The national average is represented as "100" and is indicated by a red line running across the bar graph. The numbers at the top of each bar represent how much over or under the national average the community rates for this weather risk.

Glen Mills Weather



Glen Mills Environmental Risk

