



Introduction

Part 1

This Relocation Report is designed to provide information about the economic and social structures of the selected communities. This report will compare the social and economic conditions of two communities, each containing 1 or more zip codes. Information used in this report has been broken down to the zip code level. If more than one zip code has been selected for a community, the information displayed will be an average of all the information from the zip codes that make up that "community."

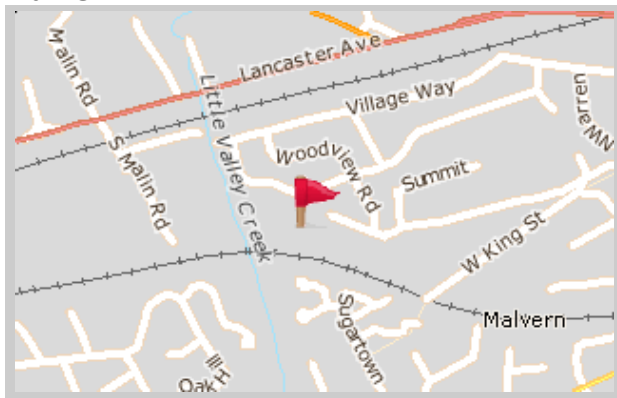
The information found in this report has been compiled and collected from the US Census and other data collection agencies.

The maps below show the center of the communities that are represented in this report.

Malvern
19355 - Pennsylvania

National Average
USA

Malvern





Population and Housing

Part 2

This report shows information collected from US Census data and other data collection agencies and is broken down into five general categories: Population, Community Summary, Housing, Housing Stability and the Population Age Demographics Chart.

The Population Age Demographics chart is broken down by community and age group with each bar on the bar graph denoting an age group and the information on top of the bar indicating the number of people in that community for each age group.

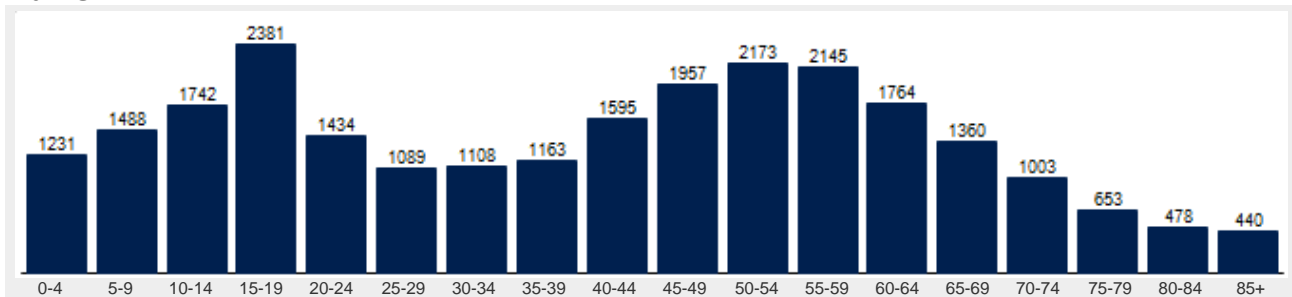
Population	Malvern	National
Male	48.5 %	49.2 %
Female	51.5 %	50.8 %
Total Population	25,203	317,504,602
Median Age	43	38

Housing	Malvern	National
Vacant Dwellings	443	13,735,766
Owner Occupied	7,381	78,220,269
Renter Occupied	1,881	41,845,751

Community Summary	Malvern	National
Population Growth (since 2000)	12.4 %	12.8 %
Population Density (ppl / mile)	657	90
Household Size (ppl)	2.68	2.58
Households w/ Children	36 %	30 %
Annual Residential Turnover	9 %	15 %

Fair Market Rents	Malvern	Chester County
Studio	\$863	\$814
One Bedroom	\$1,017	\$959
Two Bedroom	\$1,225	\$1,156
Three Bedroom	\$1,526	\$1,440
Four Bedroom	\$1,639	\$1,546

Malvern





Community Overview

Part 3

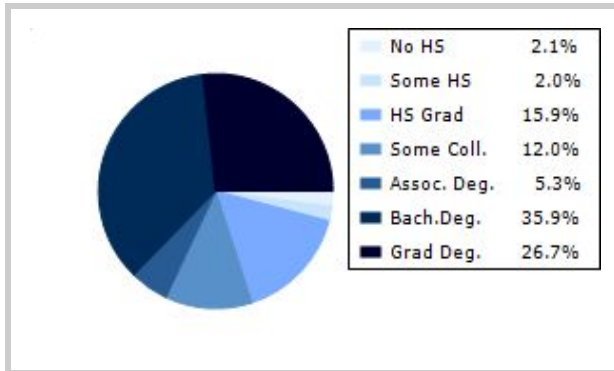
This report shows information collected from US Census and other data collection agencies and is broken down into three general categories: Racial Profile, Marital Status and Education. Each of these categories has been broken down into subcategories making it easy to do a side by side comparison of the two communities.

Education information for both communities has been broken out into two bar graphs. The information at the base of each bar on the bar graph denotes the level of education that colored bar represents. The information to the left of the community bar graph indicates the number of people in that community that have achieved that level of education.

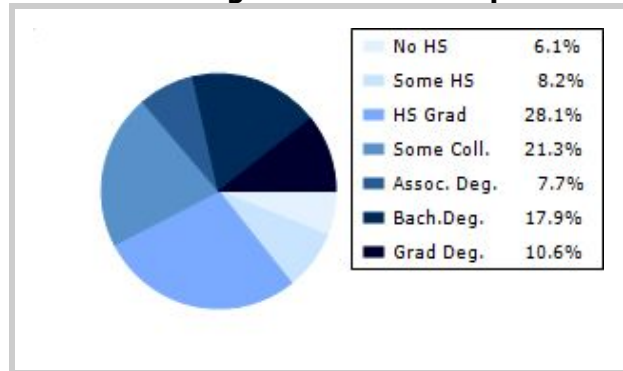
Racial Profile	Malvern	National
White	21,971	229,894,228
African American	604	39,728,359
American Indian, Eskimo, Aleut	17	3,151,782
Asian or Pacific Islander	1,923	15,288,513
Hawaiian	6	641,051
Other	247	18,461,772

Marital Status	Malvern	National
Never Married	25.3 %	31.8 %
Now Married	61.6 %	49.2 %
Separated	1.0 %	2.2 %
Widowed	5.2 %	6.0 %
Divorced	7.0 %	10.7 %
No Family	3.5 %	4.9 %
With Family	48.2 %	47.5 %
With Children	23.4 %	21.4 %
No Children	24.9 %	26.2 %

Malvern



National Average Educational Report





Financial Report

Part 4

This report shows information collected from US Census and other data collection agencies and is broken down into six general categories; Median Income, Income, Household Expenses and Median Asset Values. Each of these categories has been broken down into subcategories making it easy to do a side by side comparison of the two communities.

Median Household Income*	Malvern	National
Age < 25	\$18,993	\$27,240
Age 25 - 44	\$122,341	\$59,626
Age 45 - 64	\$126,986	\$65,864
Age 65+	\$65,660	\$37,196

* by primary householder age.

Income	Malvern	National (in MM)
< 10K	212	8
10K-15K	69	6
15K-20K	204	6
20K-25K	197	6
25K-30K	279	6
30K-35K	185	6
35K-40K	214	6
40K-45K	217	6
45K-50K	216	5
50K-60K	519	10
60K-75K	770	12
75K-100K	1145	15
100K-125K	1028	10
125K-150K	907	6
> 150K	3100	12

Relative Cost Index	Malvern	National
Contributions	133	100
Personal Insurance	146	100
Apparel	125	100
Education	145	100
Entertainment	131	100
Food And Beverages	118	100
Health Care	117	100
Furnishings	133	100
Shelter	126	100
Household Operations	137	100
Misc Expenses	130	100
Personal Care	126	100
Reading	131	100
Tobacco	98	100
Transportation	124	100
Utilities	117	100
Gifts	132	100
Total Expenses	124	100



Employment Information

This report provides a side by side comparison of the Industries, Occupations and Work Force types for the selected communities. Each of these categories has been broken down into subcategories making it easy to do a side by side comparison of the two communities.

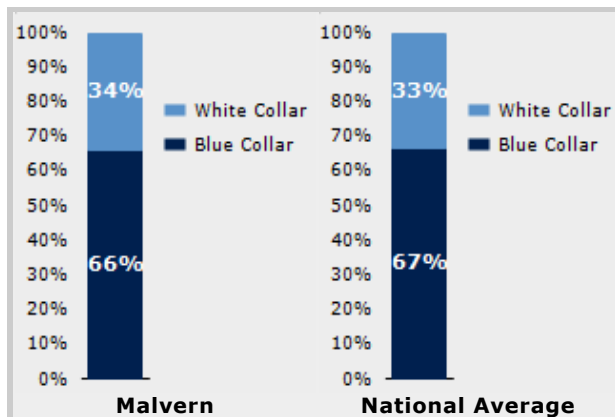
The Industry table to the left shows a breakdown of sixteen different industries and the number of people in each community that are involved in that industry.

The Work Force bar graph below shows the Blue Collar and White Collar percentages for each community, as well as the National Average.

The Occupation table below shows a breakdown of fourteen different occupation classifications and the number of people in each community whose occupation fits that classification.

Industry	Malvern	National
Agriculture	180	699,703
Mining	98	347,874
Construction	2,616	6,828,820
Manufacturing	6,223	11,664,002
Transportation and Communications	1,053	3,718,051
Wholesale Trade	536	1,817,818
Retail Trade	6,573	21,647,477
Finance, Insurance & Real Estate	2,098	5,785,438
Services	2,687	8,831,807
Food Services	2,051	10,239,067
Public Administration	326	8,640,483

Occupation	Malvern	National
Executive	2,813	7,810,420
Sales	5,360	17,227,913
Clerical	9,390	25,919,219
Protective Service	244	2,041,240
Arts	842	2,454,555
Social Services	888	4,338,751
Education	733	4,915,376
Health Care	1,547	4,273,471
Legal	628	1,738,122
Government	0	1,522,109
Computer Science	1,451	2,290,801
Finance	1,784	4,944,436



Transportation to Work	Malvern	National
Public	454	6,079,053
Drive	8,905	97,304,402
Carpool	717	15,662,618
Walk	188	3,769,819
Bike	0	489,598
Work at Home	531	3,927,567
Average Time to Work	24.0	25.0



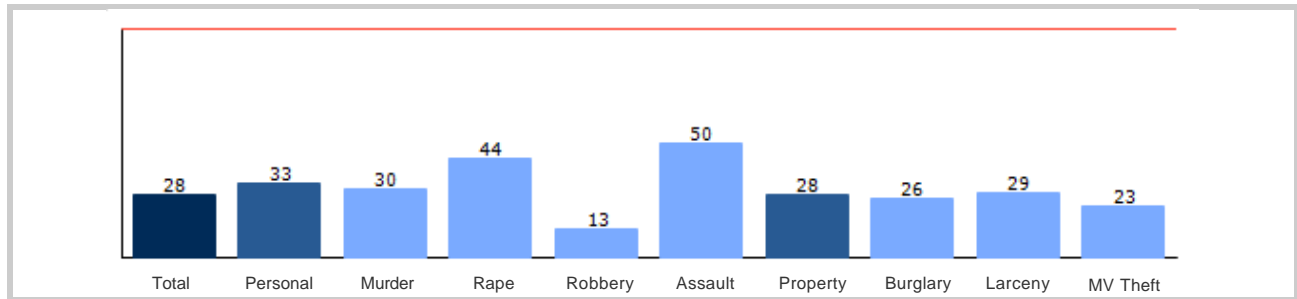
Community Crime Information

Part 6

This report shows information collected from US Census data and other data collection agencies and is broken down by community and by type of crime, and includes a Total Crime total as well. The information at the base of each bar on the bar graph denotes the type of crime that colored bar represents. The information at the top of the community bar graph indicates how that total compares to the national average for that type of offense.

The national average is represented as "100" and is indicated by the red line running across the bar graph. The numbers at the top of each bar represent how much over or under the national average the community rates for this offense.

Malvern Crime





Weather and Environmental Details

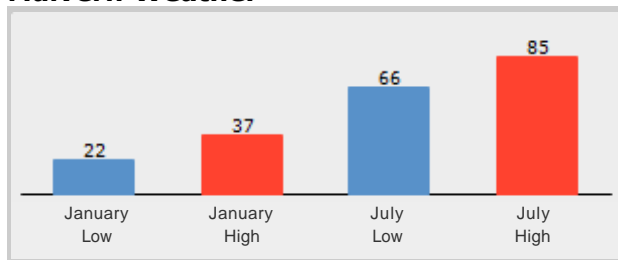
Part 7

Weather Report includes information collected from US Census data and other data collection agencies and shows the weather information for the communities you have selected. Included are temperature highs and lows averaged for the months of January and July for each community.

Environmental Details includes information collected from US Census data and other data collection agencies and shows the environmental details for the communities you have selected. The information at the base of each bar on the bar graph denotes the type of weather risk that colored bar represents. The information at the top of the community bar graph indicates how that total compares to the national average for that type of weather risk.

The national average is represented as "100" and is indicated by a red line running across the bar graph. The numbers at the top of each bar represent how much over or under the national average the community rates for this weather risk.

Malvern Weather



Malvern Environmental Risk

