



Introduction

Part 1

This Relocation Report is designed to provide information about the economic and social structures of the selected communities. This report will compare the social and economic conditions of two communities, each containing 1 or more zip codes. Information used in this report has been broken down to the zip code level. If more than one zip code has been selected for a community, the information displayed will be an average of all the information from the zip codes that make up that "community."

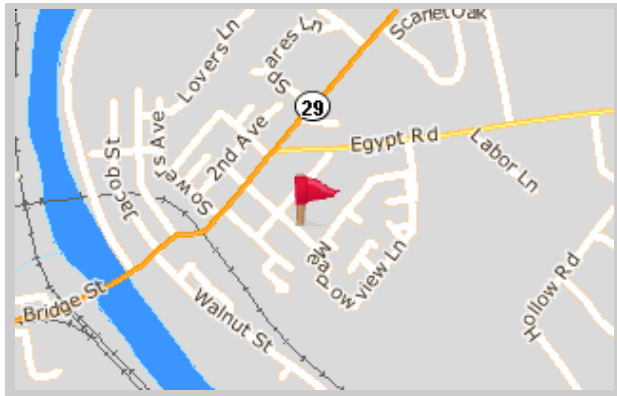
The information found in this report has been compiled and collected from the US Census and other data collection agencies.

The maps below show the center of the communities that are represented in this report.

Mont Clare
19453, 19460 - Pennsylvania

National Average
USA

Mont Clare





Population and Housing

Part 2

This report shows information collected from US Census data and other data collection agencies and is broken down into five general categories: Population, Community Summary, Housing, Housing Stability and the Population Age Demographics Chart.

The Population Age Demographics chart is broken down by community and age group with each bar on the bar graph denoting an age group and the information on top of the bar indicating the number of people in that community for each age group.

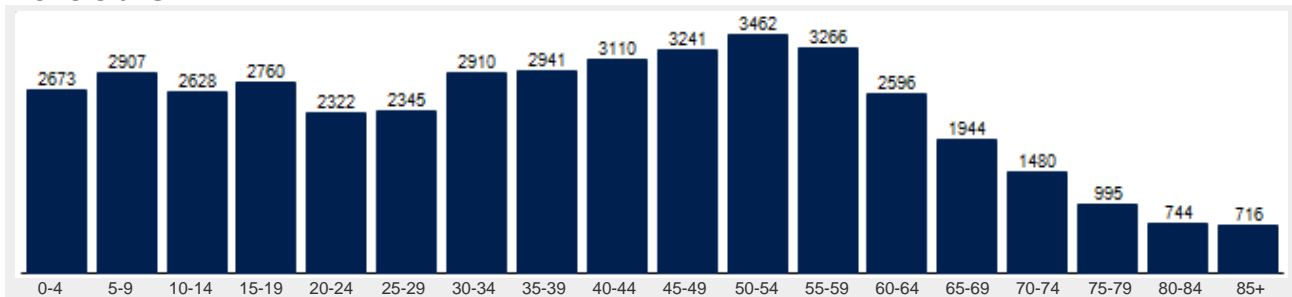
Population	Mont Clare	National
Male	49.2 %	49.2 %
Female	50.8 %	50.8 %
Total Population	43,040	317,504,602
Median Age	40	38

Housing	Mont Clare	National
Vacant Dwellings	873	13,735,766
Owner Occupied	12,761	78,220,269
Renter Occupied	4,361	41,845,751

Community Summary	Mont Clare	National
Population Growth (since 2000)	22.4 %	12.8 %
Population Density (ppl / mile)	1,215	90
Household Size (ppl)	2.45	2.58
Households w/ Children	32 %	30 %
Annual Residential Turnover	11 %	15 %

Fair Market Rents	Mont Clare	Montgomery County
Studio	\$1,921	\$814
One Bedroom	\$2,263	\$959
Two Bedroom	\$2,728	\$1,156
Three Bedroom	\$3,398	\$1,440
Four Bedroom	\$3,649	\$1,546

Mont Clare





Community Overview

Part 3

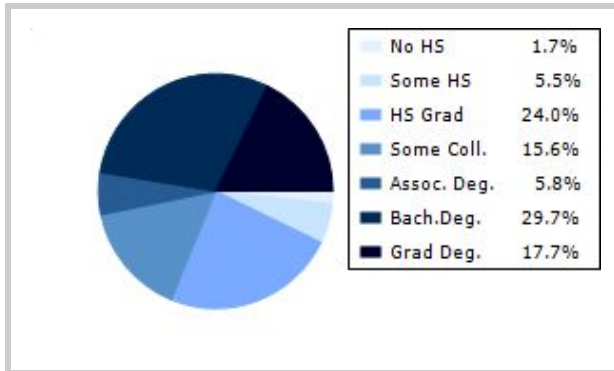
This report shows information collected from US Census and other data collection agencies and is broken down into three general categories: Racial Profile, Marital Status and Education. Each of these categories has been broken down into subcategories making it easy to do a side by side comparison of the two communities.

Education information for both communities has been broken out into two bar graphs. The information at the base of each bar on the bar graph denotes the level of education that colored bar represents. The information to the left of the community bar graph indicates the number of people in that community that have achieved that level of education.

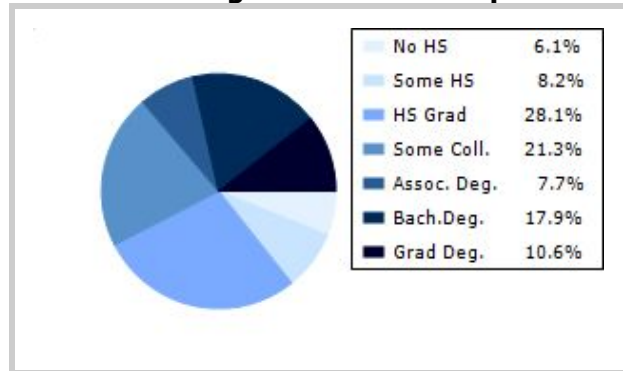
Racial Profile	Mont Clare	National
White	37,228	229,894,228
African American	2,188	39,728,359
American Indian, Eskimo, Aleut	50	3,151,782
Asian or Pacific Islander	2,068	15,288,513
Hawaiian	12	641,051
Other	533	18,461,772

Marital Status	Mont Clare	National
Never Married	29.2 %	31.8 %
Now Married	54.8 %	49.2 %
Separated	1.2 %	2.2 %
Widowed	5.8 %	6.0 %
Divorced	9.0 %	10.7 %
No Family	5.3 %	4.9 %
With Family	47.3 %	47.5 %
With Children	23.2 %	21.4 %
No Children	24.2 %	26.2 %

Mont Clare



National Average Educational Report





Financial Report

Part 4

This report shows information collected from US Census and other data collection agencies and is broken down into six general categories; Median Income, Income, Household Expenses and Median Asset Values. Each of these categories has been broken down into subcategories making it easy to do a side by side comparison of the two communities.

Median Household Income*	Mont Clare	National
Age < 25	\$47,529	\$27,240
Age 25 - 44	\$96,552	\$59,626
Age 45 - 64	\$92,822	\$65,864
Age 65+	\$41,342	\$37,196

* by primary householder age.

Income	Mont Clare	National (in MM)
< 10K	550	8
10K-15K	580	6
15K-20K	429	6
20K-25K	593	6
25K-30K	453	6
30K-35K	681	6
35K-40K	528	6
40K-45K	582	6
45K-50K	597	5
50K-60K	1192	10
60K-75K	1714	12
75K-100K	2440	15
100K-125K	1969	10
125K-150K	1192	6
> 150K	3623	12

Relative Cost Index	Mont Clare	National
Contributions	111	100
Personal Insurance	117	100
Apparel	108	100
Education	115	100
Entertainment	111	100
Food And Beverages	101	100
Health Care	100	100
Furnishings	112	100
Shelter	108	100
Household Operations	114	100
Misc Expenses	109	100
Personal Care	108	100
Reading	109	100
Tobacco	92	100
Transportation	107	100
Utilities	103	100
Gifts	110	100
Total Expenses	106	100



Employment Information

This report provides a side by side comparison of the Industries, Occupations and Work Force types for the selected communities. Each of these categories has been broken down into subcategories making it easy to do a side by side comparison of the two communities.

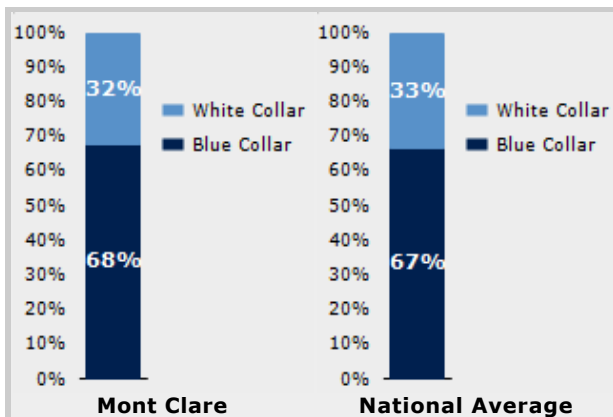
The Industry table to the left shows a breakdown of sixteen different industries and the number of people in each community that are involved in that industry.

The Work Force bar graph below shows the Blue Collar and White Collar percentages for each community, as well as the National Average.

The Occupation table below shows a breakdown of fourteen different occupation classifications and the number of people in each community whose occupation fits that classification.

Industry	Mont Clare	National
Agriculture	63	699,703
Mining	11	347,874
Construction	462	6,828,820
Manufacturing	1,334	11,664,002
Transportation and Communications	213	3,718,051
Wholesale Trade	171	1,817,818
Retail Trade	2,300	21,647,477
Finance, Insurance & Real Estate	495	5,785,438
Services	1,146	8,831,807
Food Services	1,645	10,239,067
Public Administration	352	8,640,483

Occupation	Mont Clare	National
Executive	746	7,810,420
Sales	1,717	17,227,913
Clerical	2,290	25,919,219
Protective Service	147	2,041,240
Arts	196	2,454,555
Social Services	382	4,338,751
Education	354	4,915,376
Health Care	584	4,273,471
Legal	79	1,738,122
Government	0	1,522,109
Computer Science	213	2,290,801
Finance	401	4,944,436



Transportation to Work	Mont Clare	National
Public	450	6,079,053
Drive	15,352	97,304,402
Carpool	1,465	15,662,618
Walk	443	3,769,819
Bike	15	489,598
Work at Home	548	3,927,567
Average Time to Work	53.0	25.0



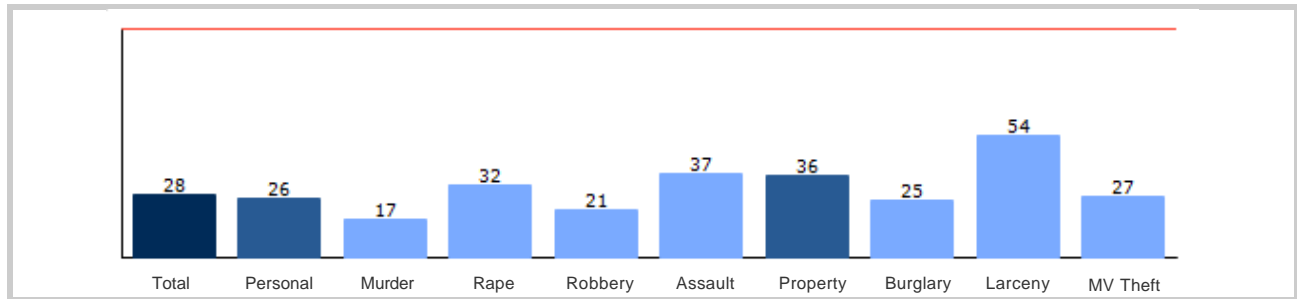
Community Crime Information

Part 6

This report shows information collected from US Census data and other data collection agencies and is broken down by community and by type of crime, and includes a Total Crime total as well. The information at the base of each bar on the bar graph denotes the type of crime that colored bar represents. The information at the top of the community bar graph indicates how that total compares to the national average for that type of offense.

The national average is represented as "100" and is indicated by the red line running across the bar graph. The numbers at the top of each bar represent how much over or under the national average the community rates for this offense.

Mont Clare Crime





Weather and Environmental Details

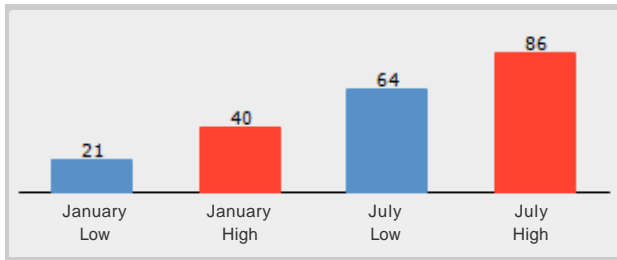
Part 7

Weather Report includes information collected from US Census data and other data collection agencies and shows the weather information for the communities you have selected. Included are temperature highs and lows averaged for the months of January and July for each community.

Environmental Details includes information collected from US Census data and other data collection agencies and shows the environmental details for the communities you have selected. The information at the base of each bar on the bar graph denotes the type of weather risk that colored bar represents. The information at the top of the community bar graph indicates how that total compares to the national average for that type of weather risk.

The national average is represented as "100" and is indicated by a red line running across the bar graph. The numbers at the top of each bar represent how much over or under the national average the community rates for this weather risk.

Mont Clare Weather



Mont Clare Environmental Risk

