



Introduction

Part 1

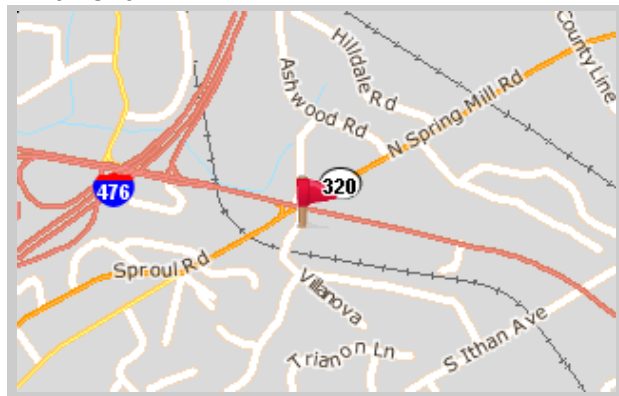
This Relocation Report is designed to provide information about the economic and social structures of the selected communities. This report will compare the social and economic conditions of two communities, each containing 1 or more zip codes. Information used in this report has been broken down to the zip code level. If more than one zip code has been selected for a community, the information displayed will be an average of all the information from the zip codes that make up that "community."

The information found in this report has been compiled and collected from the US Census and other data collection agencies.

The maps below show the center of the communities that are represented in this report.

Villanova
19085 - Pennsylvania
National Average
USA

Villanova





Population and Housing

Part 2

This report shows information collected from US Census data and other data collection agencies and is broken down into five general categories: Population, Community Summary, Housing, Housing Stability and the Population Age Demographics Chart.

The Population Age Demographics chart is broken down by community and age group with each bar on the bar graph denoting an age group and the information on top of the bar indicating the number of people in that community for each age group.

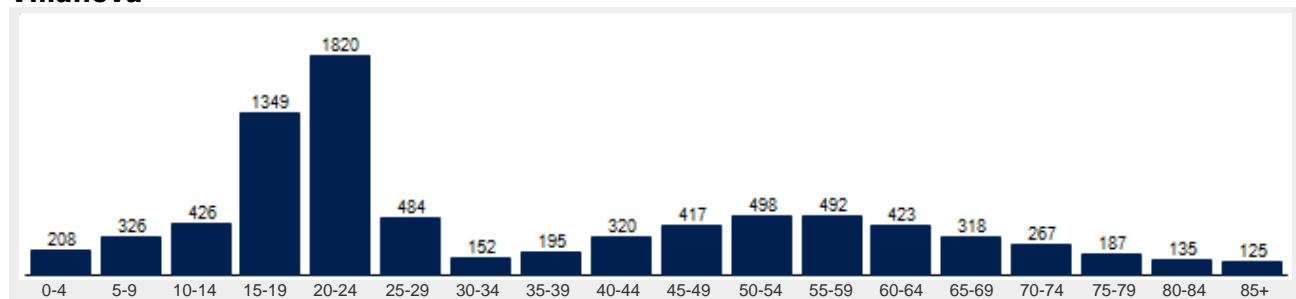
Population	Villanova	National
Male	48.1 %	49.2 %
Female	52.0 %	50.8 %
Total Population	8,140	317,504,602
Median Age	25	38

Housing	Villanova	National
Vacant Dwellings	109	13,735,766
Owner Occupied	1,584	78,220,269
Renter Occupied	134	41,845,751

Community Summary	Villanova	National
Population Growth (since 2000)	-3.6 %	12.8 %
Population Density (ppl / mile)	1,347	90
Household Size (ppl)	2.83	2.58
Households w/ Children	36 %	30 %
Annual Residential Turnover	12 %	15 %

Fair Market Rents	Villanova	Delaware County
Studio	\$2,670	\$814
One Bedroom	\$3,146	\$959
Two Bedroom	\$3,792	\$1,156
Three Bedroom	\$4,723	\$1,440
Four Bedroom	\$5,071	\$1,546

Villanova





Community Overview

Part 3

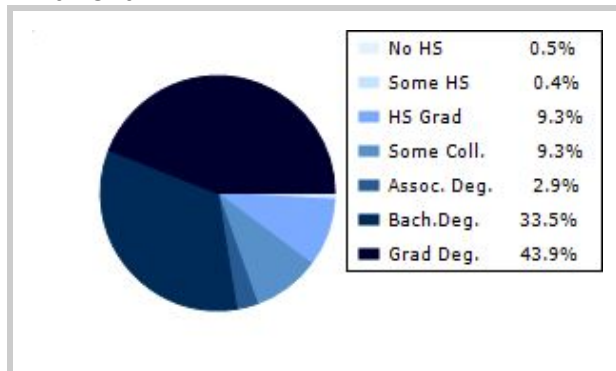
This report shows information collected from US Census and other data collection agencies and is broken down into three general categories: Racial Profile, Marital Status and Education. Each of these categories has been broken down into subcategories making it easy to do a side by side comparison of the two communities.

Education information for both communities has been broken out into two bar graphs. The information at the base of each bar on the bar graph denotes the level of education that colored bar represents. The information to the left of the community bar graph indicates the number of people in that community that have achieved that level of education.

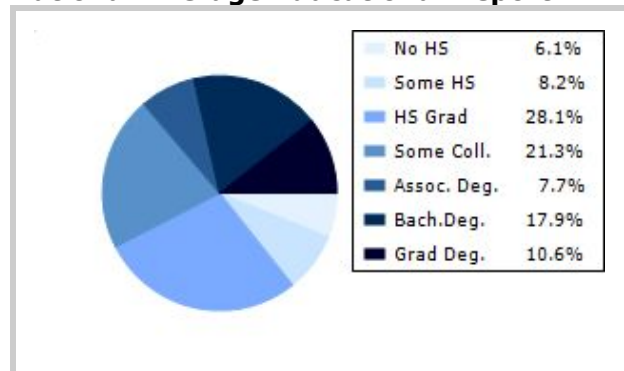
Racial Profile	Villanova	National
White	7,267	229,894,228
African American	237	39,728,359
American Indian, Eskimo, Aleut	0	3,151,782
Asian or Pacific Islander	435	15,288,513
Hawaiian	0	641,051
Other	55	18,461,772

Marital Status	Villanova	National
Never Married	50.4 %	31.8 %
Now Married	43.3 %	49.2 %
Separated	0.6 %	2.2 %
Widowed	2.6 %	6.0 %
Divorced	3.1 %	10.7 %
No Family	1.7 %	4.9 %
With Family	49.2 %	47.5 %
With Children	21.5 %	21.4 %
No Children	27.6 %	26.2 %

Villanova



National Average Educational Report





Financial Report

Part 4

This report shows information collected from US Census and other data collection agencies and is broken down into six general categories; Median Income, Income, Household Expenses and Median Asset Values. Each of these categories has been broken down into subcategories making it easy to do a side by side comparison of the two communities.

Median Household Income*	Villanova	National
Age < 25	\$52,572	\$27,240
Age 25 - 44	\$164,296	\$59,626
Age 45 - 64	\$166,402	\$65,864
Age 65+	\$144,008	\$37,196

* by primary householder age.

Income	Villanova	National (in MM)
< 10K	22	8
10K-15K	23	6
15K-20K	4	6
20K-25K	24	6
25K-30K	25	6
30K-35K	6	6
35K-40K	39	6
40K-45K	35	6
45K-50K	19	5
50K-60K	87	10
60K-75K	144	12
75K-100K	125	15
100K-125K	80	10
125K-150K	102	6
> 150K	982	12

Relative Cost Index	Villanova	National
Contributions	208	100
Personal Insurance	225	100
Apparel	178	100
Education	233	100
Entertainment	193	100
Food And Beverages	162	100
Health Care	155	100
Furnishings	192	100
Shelter	181	100
Household Operations	204	100
Misc Expenses	189	100
Personal Care	175	100
Reading	188	100
Tobacco	120	100
Transportation	170	100
Utilities	167	100
Gifts	205	100
Total Expenses	175	100



Employment Information

This report provides a side by side comparison of the Industries, Occupations and Work Force types for the selected communities. Each of these categories has been broken down into subcategories making it easy to do a side by side comparison of the two communities.

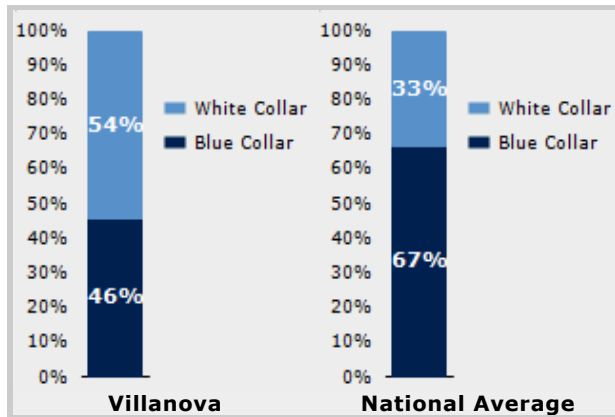
The Industry table to the left shows a breakdown of sixteen different industries and the number of people in each community that are involved in that industry.

The Work Force bar graph below shows the Blue Collar and White Collar percentages for each community, as well as the National Average.

The Occupation table below shows a breakdown of fourteen different occupation classifications and the number of people in each community whose occupation fits that classification.

Industry	Villanova	National
Agriculture	0	699,703
Mining	2	347,874
Construction	117	6,828,820
Manufacturing	10	11,664,002
Transportation and Communications	29	3,718,051
Wholesale Trade	26	1,817,818
Retail Trade	141	21,647,477
Finance, Insurance & Real Estate	656	5,785,438
Services	161	8,831,807
Food Services	111	10,239,067
Public Administration	49	8,640,483

Occupation	Villanova	National
Executive	345	7,810,420
Sales	314	17,227,913
Clerical	1,135	25,919,219
Protective Service	25	2,041,240
Arts	73	2,454,555
Social Services	327	4,338,751
Education	277	4,915,376
Health Care	267	4,273,471
Legal	43	1,738,122
Government	0	1,522,109
Computer Science	112	2,290,801
Finance	252	4,944,436



Transportation to Work	Villanova	National
Public	226	6,079,053
Drive	1,987	97,304,402
Carpool	140	15,662,618
Walk	573	3,769,819
Bike	7	489,598
Work at Home	200	3,927,567
Average Time to Work	22.0	25.0



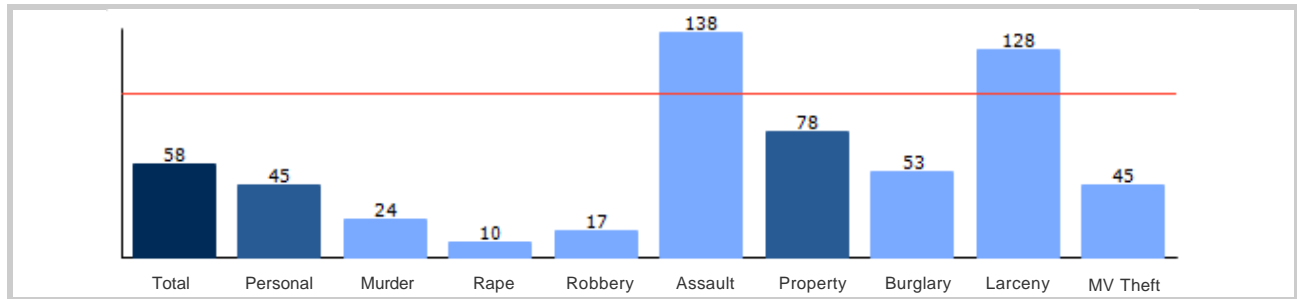
Community Crime Information

Part 6

This report shows information collected from US Census data and other data collection agencies and is broken down by community and by type of crime, and includes a Total Crime total as well. The information at the base of each bar on the bar graph denotes the type of crime that colored bar represents. The information at the top of the community bar graph indicates how that total compares to the national average for that type of offense.

The national average is represented as "100" and is indicated by the red line running across the bar graph. The numbers at the top of each bar represent how much over or under the national average the community rates for this offense.

Villanova Crime





Weather and Environmental Details

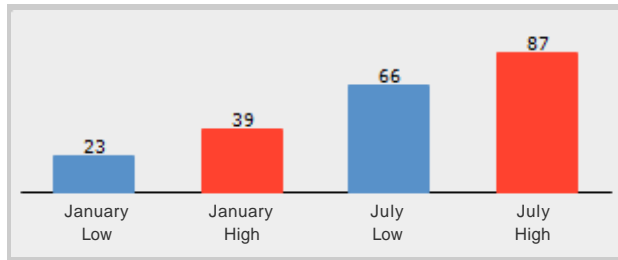
Part 7

Weather Report includes information collected from US Census data and other data collection agencies and shows the weather information for the communities you have selected. Included are temperature highs and lows averaged for the months of January and July for each community.

Environmental Details includes information collected from US Census data and other data collection agencies and shows the environmental details for the communities you have selected. The information at the base of each bar on the bar graph denotes the type of weather risk that colored bar represents. The information at the top of the community bar graph indicates how that total compares to the national average for that type of weather risk.

The national average is represented as "100" and is indicated by a red line running across the bar graph. The numbers at the top of each bar represent how much over or under the national average the community rates for this weather risk.

Villanova Weather



Villanova Environmental Risk

