



# Introduction

Part 1

This Relocation Report is designed to provide information about the economic and social structures of the selected communities. This report will compare the social and economic conditions of two communities, each containing 1 or more zip codes. Information used in this report has been broken down to the zip code level. If more than one zip code has been selected for a community, the information displayed will be an average of all the information from the zip codes that make up that "community."

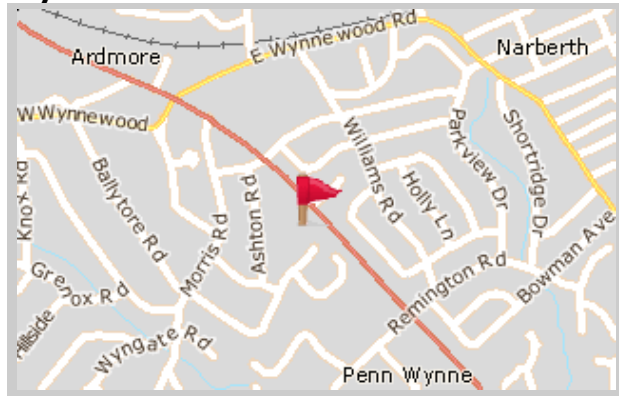
The information found in this report has been compiled and collected from the US Census and other data collection agencies.

The maps below show the center of the communities that are represented in this report.

<b>Wynnewood</b>
19096 - Pennsylvania

<b>National Average</b>
USA

## Wynnewood





# Population and Housing

Part 2

This report shows information collected from US Census data and other data collection agencies and is broken down into five general categories: Population, Community Summary, Housing, Housing Stability and the Population Age Demographics Chart.

The Population Age Demographics chart is broken down by community and age group with each bar on the bar graph denoting an age group and the information on top of the bar indicating the number of people in that community for each age group.

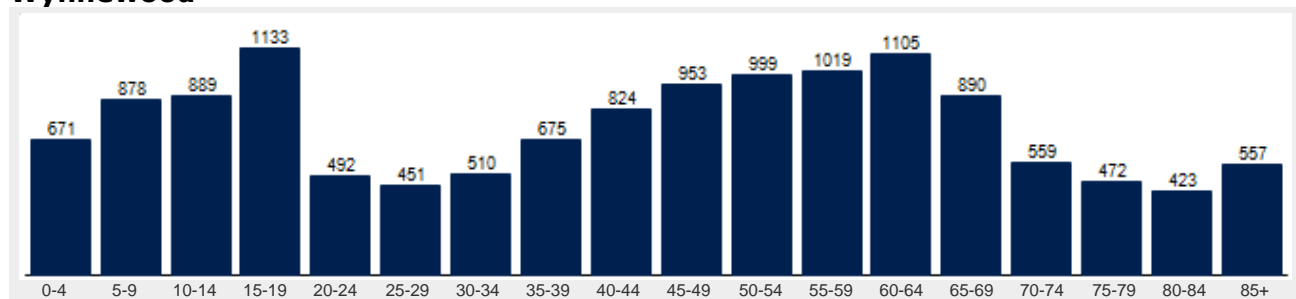
Population	Wynnewood	National
Male	46.9 %	49.2 %
Female	53.1 %	50.8 %
Total Population	13,500	317,504,602
Median Age	46	38

Housing	Wynnewood	National
Vacant Dwellings	218	13,735,766
Owner Occupied	4,406	78,220,269
Renter Occupied	993	41,845,751

Community Summary	Wynnewood	National
Population Growth (since 2000)	2.2 %	12.8 %
Population Density (ppl / mile)	3,853	90
Household Size (ppl)	2.45	2.58
Households w/ Children	34 %	30 %
Annual Residential Turnover	9 %	15 %

Fair Market Rents	Wynnewood	Montgomery County
Studio	\$1,009	\$814
One Bedroom	\$1,189	\$959
Two Bedroom	\$1,433	\$1,156
Three Bedroom	\$1,786	\$1,440
Four Bedroom	\$1,917	\$1,546

## Wynnewood





# Community Overview

Part 3

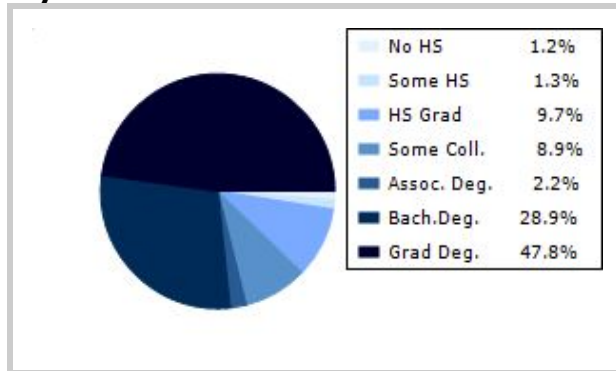
This report shows information collected from US Census and other data collection agencies and is broken down into three general categories: Racial Profile, Marital Status and Education. Each of these categories has been broken down into subcategories making it easy to do a side by side comparison of the two communities.

Education information for both communities has been broken out into two bar graphs. The information at the base of each bar on the bar graph denotes the level of education that colored bar represents. The information to the left of the community bar graph indicates the number of people in that community that have achieved that level of education.

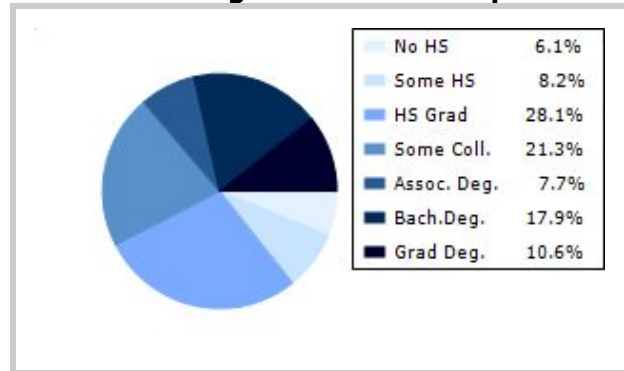
Racial Profile	Wynnewood	National
White	11,501	229,894,228
African American	602	39,728,359
American Indian, Eskimo, Aleut	11	3,151,782
Asian or Pacific Islander	1,112	15,288,513
Hawaiian	3	641,051
Other	76	18,461,772

Marital Status	Wynnewood	National
Never Married	22.0 %	31.8 %
Now Married	62.5 %	49.2 %
Separated	1.2 %	2.2 %
Widowed	7.6 %	6.0 %
Divorced	6.7 %	10.7 %
No Family	2.2 %	4.9 %
With Family	48.9 %	47.5 %
With Children	23.8 %	21.4 %
No Children	25.1 %	26.2 %

## Wynnewood



## National Average Educational Report





# Financial Report

Part 4

This report shows information collected from US Census and other data collection agencies and is broken down into six general categories; Median Income, Income, Household Expenses and Median Asset Values. Each of these categories has been broken down into subcategories making it easy to do a side by side comparison of the two communities.

Median Household Income*	Wynnewood	National
Age < 25	\$14,270	\$27,240
Age 25 - 44	\$142,726	\$59,626
Age 45 - 64	\$149,706	\$65,864
Age 65+	\$70,251	\$37,196

\* by primary householder age.

Income	Wynnewood	National (in MM)
< 10K	128	8
10K-15K	140	6
15K-20K	58	6
20K-25K	74	6
25K-30K	89	6
30K-35K	155	6
35K-40K	108	6
40K-45K	111	6
45K-50K	138	5
50K-60K	245	10
60K-75K	506	12
75K-100K	694	15
100K-125K	497	10
125K-150K	522	6
> 150K	1935	12

Relative Cost Index	Wynnewood	National
Contributions	133	100
Personal Insurance	144	100
Apparel	117	100
Education	132	100
Entertainment	126	100
Food And Beverages	112	100
Health Care	110	100
Furnishings	125	100
Shelter	122	100
Household Operations	130	100
Misc Expenses	123	100
Personal Care	120	100
Reading	126	100
Tobacco	89	100
Transportation	115	100
Utilities	118	100
Gifts	135	100
<b>Total Expenses</b>	<b>118</b>	<b>100</b>



# Employment Information

This report provides a side by side comparison of the Industries, Occupations and Work Force types for the selected communities. Each of these categories has been broken down into subcategories making it easy to do a side by side comparison of the two communities.

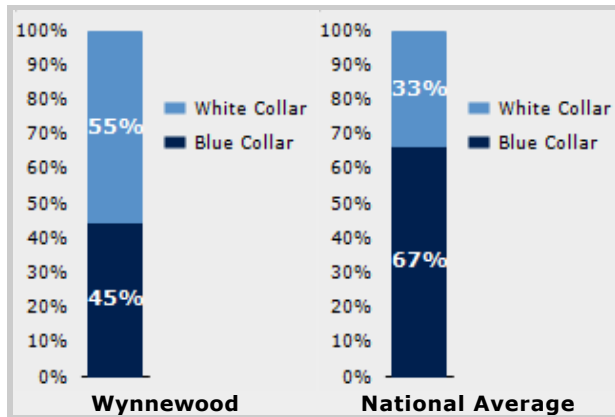
The Industry table to the left shows a breakdown of sixteen different industries and the number of people in each community that are involved in that industry.

The Work Force bar graph below shows the Blue Collar and White Collar percentages for each community, as well as the National Average.

The Occupation table below shows a breakdown of fourteen different occupation classifications and the number of people in each community whose occupation fits that classification.

Industry	Wynnewood	National
Agriculture	7	699,703
Mining	0	347,874
Construction	55	6,828,820
Manufacturing	174	11,664,002
Transportation and Communications	0	3,718,051
Wholesale Trade	21	1,817,818
Retail Trade	861	21,647,477
Finance, Insurance & Real Estate	116	5,785,438
Services	756	8,831,807
Food Services	136	10,239,067
Public Administration	89	8,640,483

Occupation	Wynnewood	National
Executive	399	7,810,420
Sales	545	17,227,913
Clerical	1,612	25,919,219
Protective Service	88	2,041,240
Arts	88	2,454,555
Social Services	688	4,338,751
Education	232	4,915,376
Health Care	551	4,273,471
Legal	22	1,738,122
Government	0	1,522,109
Computer Science	87	2,290,801
Finance	170	4,944,436



Transportation to Work	Wynnewood	National
Public	682	6,079,053
Drive	4,611	97,304,402
Carpool	391	15,662,618
Walk	128	3,769,819
Bike	16	489,598
Work at Home	406	3,927,567
Average Time to Work	26.0	25.0



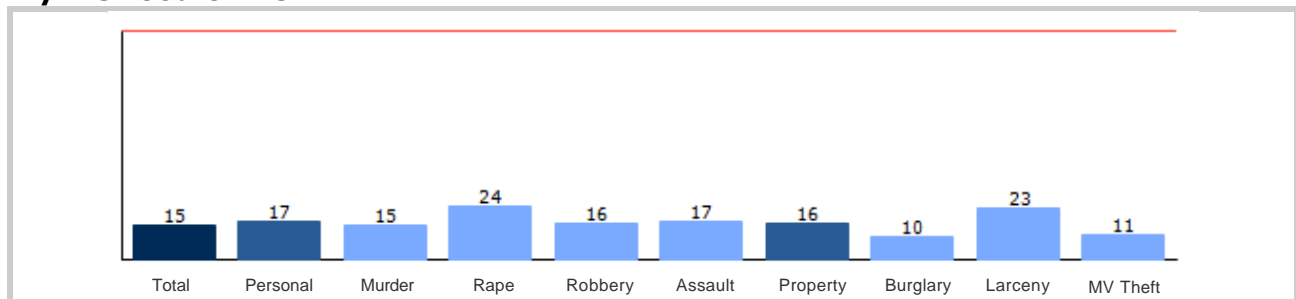
# Community Crime Information

Part 6

This report shows information collected from US Census data and other data collection agencies and is broken down by community and by type of crime, and includes a Total Crime total as well. The information at the base of each bar on the bar graph denotes the type of crime that colored bar represents. The information at the top of the community bar graph indicates how that total compares to the national average for that type of offense.

The national average is represented as "100" and is indicated by the red line running across the bar graph. The numbers at the top of each bar represent how much over or under the national average the community rates for this offense.

## Wynnewood Crime





# Weather and Environmental Details

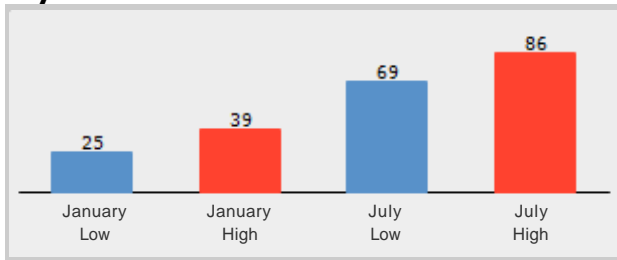
Part 7

**Weather Report** includes information collected from US Census data and other data collection agencies and shows the weather information for the communities you have selected. Included are temperature highs and lows averaged for the months of January and July for each community.

**Environmental Details** includes information collected from US Census data and other data collection agencies and shows the environmental details for the communities you have selected. The information at the base of each bar on the bar graph denotes the type of weather risk that colored bar represents. The information at the top of the community bar graph indicates how that total compares to the national average for that type of weather risk.

The national average is represented as "100" and is indicated by a red line running across the bar graph. The numbers at the top of each bar represent how much over or under the national average the community rates for this weather risk.

## Wynnewood Weather



## Wynnewood Environmental Risk

